



V4KU Series Dip Card Reader Data Transmission Specifications

Rev. A

June 12, 2003

Advanced Modules Business Company

© OMRON Corporation 2003
All Rights Reserved

Table of Contents

1. INTRODUCTION.....	6
1.1 Introduction.....	6
1.2 Applicable Card Reader.....	6
1.3 Normative References.....	6
1.4 Notice for IC card (ICC).....	6
1.5 Definition of Terminology.....	7
2. USB SPECIFICATIONS.....	8
2.1 General Specification.....	8
2.2 USB Descriptors.....	8
2.2.1 Device Descriptor.....	8
2.2.2 Configuration Descriptor.....	8
2.2.3 Interface Descriptor.....	9
2.2.4 HID Descriptor.....	9
2.2.5 Endpoint Descriptor.....	9
2.3 Transmission Sequence.....	10
2.3.1 Normal Sequence.....	10
2.3.2 Abnormal Sequence.....	10
2.3.3 Cancel Sequence (1).....	10
2.3.4 Cancel Sequence (2).....	10
3. ENCRYPTION SPECIFICATIONS.....	11
3.1 Concept.....	11
3.2 Key Exchange Sequence.....	11
STEP 2: ENCRYPT DATA TRANSMISSION DURING THE TRANSACTION.....	12
4. MESSAGE SPECIFICATIONS.....	13
4.1 Command Format (HOST -> C/R).....	13
4.2 Response Format (C/R -> HOST).....	14
4.3 Cancel Request Format.....	15
4.4 Cancel Response Format.....	15
5. COMMAND TABLES.....	16
5.1 Basic Commands.....	16
5.2 ICC Commands.....	16
5.3 SAM Commands.....	17
5.4 Protocol Handling for ICC & SAM.....	17
5.5 Memory Card Handling.....	17
5.6 Download Function.....	17
6. RESPONSE TABLE.....	18
6.1 Table of Positive Response Status.....	18
6.2 Status Table of SAM Positive Response.....	18
6.3 Table of Negative Response Status (Error Code).....	19
7. COMMAND SPECIFICATION.....	21
7.1 (g6) Key Exchange.....	21
7.2 (00) Initial Reset (Return to Front).....	23
7.3 (10) Status Sense (C/R Sense).....	24
7.4 (11) Status Sense (Sensor Sense).....	25
7.5 (61) Magnetic Read (ISO#1).....	26
7.6 (62) Magnetic Read (ISO#2).....	27
7.7 (63) Magnetic Read (ISO#3).....	28
7.8 (6a) Magnetic Read (Multiple Tracks).....	29
7.9 (6s) Magnetic Read Data Clear.....	31
7.10 (92) Card Status Monitoring.....	32
7.11 (C0) Lock.....	34
7.12 (C1) Unlock.....	35
7.13 (C2) ICC Activation.....	36
7.14 (C3) ICC Deactivation.....	38
7.15 (C5) ICC Lock + Activation.....	39
7.16 (C6) ICC Deactivation + Unlock.....	41
7.17 (E0) ICC Cold Reset.....	42
7.18 (E1) ICC Warm Reset.....	44

7.19	(F0) ICC T=0 Transmission	46
7.20	(F1) ICC T=1 Transmission	48
7.21	(F2) ICC T=1 Continuous Transmission	50
7.22	(F3) ICC T=1 Continuous Reception	51
7.23	(F4) ICC T=1 Interruption Completion	52
7.24	(F8) ICC PPS Exchange	53
7.25	(FC) ICC T=0 / T=1 Transmission	54
7.26	(G1) ICC Lock + Cold Reset	56
7.27	(J0) Local Error Log	58
7.28	(L0) Sensor Level Read	59
7.29	(M0) Life Counter Read	60
7.30	(N0) Option Read	61
7.31	(P6) LED OFF	62
7.32	(P7) LED ON	63
7.33	(P8) LED Blinking	64
7.34	(V0) FW Version Read (ROM and Total FW)	65
7.35	(V1) FW Version Read (ICC FW)	66
7.36	(V2) FW Version Read (SAM FW)	67
7.37	(Y0) ICC Control Information Read	68
7.38	(Y2) ICC Control Information (Timer value of Waiting for reception from ICC)	69
7.39	(Y3) ICC Control Information (IFSD Control Method)	70
7.40	(Y4) ICC Control Information (TCK Control Method)	71
7.41	(Y5) ICC Control Information Supply (Voltage Level Set)	72
7.42	(Y6) ICC Control Information (ICC Mode Setting)	73
7.43	(Y7) ICC Control Information (SAM Mode Setting)	74
7.44	(d0) DL Start	75
7.45	(d1) DL Transmission	76
7.46	(d2) DL Completion	77
7.47	(d3) DL Preparation	78
7.48	(e0) SAM Status Sense	79
7.49	(e1) SAM Activation	80
7.50	(e2) SAM Deactivation	82
7.51	(e3) SAM Cold Reset	83
7.52	(e4) SAM Warm Reset	85
7.53	(f0) SAM T=0 Transmission	87
7.54	(f1) SAM T=1 Transmission	89
7.55	(f2) SAM T=1 Continuous Transmission	91
7.56	(f3) SAM T=1 Continuous Reception	93
7.57	(f4) SAM T=1 Interruption Completion	94
7.58	(f8) SAM PPS Request	95
7.59	(fC) SAM T=0 / T=1 Transmission	96
7.60	(m2) Memory Card Activation	98
7.61	(m3) Memory Card Deactivation	99
7.62	(m5) Lock + memory card activation	100
7.63	(m6) Memory card deactivation + Unlock	101
7.64	(m7) Memory Card Transmission	102
7.65	(m8) Memory Card PSC Certification	105
7.66	(u0) USER Information Read	106
7.67	(u1) USER Information Read for Partial FW	107
7.68	(:6) Transaction Setting	108
8.	MAINTENANCE BUTTON	110
8.1	Maintenance Procedures	110
8.2	LED Indicator	110
8.3	Command Response Specifications	110
9.	HOST SEQUENCE	111
9.1	Insertion Reading	111
9.2	Back Reading	111
9.3	Insertion Reading + ICC Transaction	111
9.4	Back Reading + ICC Transaction	111
10.	HOST SEQUENCE FLOWCHART	112
10.1	Insertion Reading	112
10.2	Back Reading	113
10.3	Insertion Reading + ICC Transaction	114
10.4	Back Reading + ICC Transaction	115

11.	CARD READER STATUS CHANGE CHART	116
11.1	No Read Mode	116
11.2	Forward Read Mode.....	117
11.3	Back Read Mode.....	118
11.4	No Read Transaction Mode (ICC Transaction only)	119
12.	MAGNETIC CARD DATA RECORD FORMAT	120
13.	SUPPORTABLE TRANSMISSION FACTORS F AND D	123
13.1	IC Card handling	123
13.2	SAM handling.....	124

[Specification History of Modification]

Rev.	Date	Section Number	Content
A	June 12, 2003	--	First Official Release

1. Introduction

1.1 Introduction

This specification provides the transmission specifications between the V4KU Series Card Reader and the HOST terminal.

1.2 Applicable Card Reader

	Magnetic write/read			IC Card Controller	Lock	Host I/F	SAM	Module Name
	Tr 1	Tr 2	Tr 3					
A	R	R	R	Y	Y	USB	Y	V4KU-01JR-001
B	R	R	R	Y	Y	USB	Y	V4KU-01JS-001
C	R	R	R	Y	Y	USB	Y	V4KU-01JF-001
D	R	R	R	Y	Y	USB	Y	V4KU-01JN-001

*1 R : Magnetic reading function is provided
 *2 Y : Provided
 *3 N : Not provided

1.3 Normative References

The following standards contain the provisions that are referred in this specification.

USB 2.0	Universal Serial Bus Specification, Compaq/Hewlett-Packard/Intel/Lucent/Microsoft/NEC/Philips, Revision 2.0, April 27, 2000
HID 1.1	Universal Serial Bus Specification Device Class Definition for Human Interface Device (HID) Firmware Specification- 4/7/99 Version 1.1
ISO/IEC 7816-3:1997	Identification cards - Integrated circuit(s) cards with contacts Part 3: Electronic signals and transmission protocols
ISO/IEC 7816-4:1995	Identification cards - Integrated circuit(s) cards with contacts Part 4: Inter-industry commands for interchange
ISO/IEC 7810: 1995-08-15	Identification cards - Physical characteristics
ISO/IEC 7811-1: 1995-08-15	Identification cards - Recording technique Part 1:Embossing
ISO/IEC 7811-2: 2001-02-01	Identification cards - Recording technique Part 2:Magnetic stripe - Low coercivity
ISO/IEC 7811-3: 1995-08-15	Identification cards - Recording technique Part 3:Location of embossed characters on ID-1 cards
ISO/IEC 7811-4: 1995-08-15	Identification cards - Recording technique Part 4:Location of read-only magnetic tracks - Tracks 1 and 2
ISO/IEC 7811-5: 1995-08-15	Identification cards - Recording technique Part 5:Location of read-only magnetic tracks - Tracks 3
EMV 4.0: December, 2000	EMV2000 Integrated Circuit Card Specification for Payment Systems Book 1 Application Independent ICC to Terminal Interface Requirements
Memory Card	SIEMENS SLE4432/SLE4442 Data Books SIEMENS SLE4418/SLE4428Data Books

1.4 Notice for IC card (ICC)

OMRON standard ICC controller and FW (firmware) cannot perfectly execute almost all customers' ICC(s) because ISO standard and also ICC(s) are modified frequently. OMRON should check your customer's ICC if you can get it and its specification.

1.5 Definition of Terminology

(1) General

C/R	Card Reader
Default	Value set by the C/R when the power is turned on
DL	Program Downloading
FW	Firmware
HOST	HOST Terminal
ICC	Integrated Circuit Card. A card into which one or more integrated circuits are inserted to perform processing and memory functions.
max.	Maximum
min.	Minimum
Partial FW	ICC or SAM protocol modules that can be downloaded by each ICC standard.
Standard FW	A firmware that excludes ICC or SAM protocol.
SAM	Security Application Module

(2) Mechanical

S1 Sensor	Front sensor to detect the insertion and ejection of the cards.
S2 Sensor	Rear sensor to detect the completion of card insertion and the start of card ejection.
Lock	Lock to prevent the card from being pulled out during ICC activation.

(3) Host Interface

USB	Universal Serial Bus
HID	Human Interface Device

(4) Magnetic Card

SS	Magnetic Data Start Sentinel
ES	Magnetic Data End Sentinel
LRC	Magnetic Data Longitudinal Redundancy Check
VRC	Magnetic Data Vertical Parity

(5) IC Card

APDU	Application Protocol Data Unit
ATR	Answer to Reset
BWI	Block Waiting Time Integer
BWT	Block Waiting Time
CLA	Class Byte of the Command Message
Cold Reset	The reset of the ICC that occurs when the supply voltage (VCC) and other signals to the ICC are raised from the inactive state and the reset (RST) signal is applied.
D	Indicated values of the bit rate adjustment factor
etu	Elementary Time Unit
F	Indicated values of the clock rate conversion factor
IFS	Information Field Size
IFSD	Information field size for the interface device
Lc	Exact Length of Data Sent by Terminal in Response to a Case 3 or 4 Command
Le	Maximum Length of Data Expected by the terminal in Response to a Case 2 or 4 Command
LEN	Length
NAD	Node Address
P1	Parameter 1
P2	Parameter 2
P3	Parameter 3
PCB	Protocol Control Byte
PPS	Protocol and Parameter Selection
SAD	Source Node Address
SW1	Status Word One
SW2	Status Word Two
T=0	Character-oriented asynchronous half duplex transmission protocol
T=1	Block-oriented asynchronous half duplex transmission protocol
TCK	Check Character
Warm Reset	The reset that occurs when the reset (RST) signal is applied to the ICC while the clock (CLK) and supply voltage (VCC) lines are maintained in their active state.

(6) Character Code Expression Method

XXh	shows the HEX Code.
"X"	shows the ASCII Code.

2. USB Specifications

2.1 General Specification

Protocol Version	USB Version 2.0 certified
Connector	Type B Connector
Power supply	Non-Bus powered
Device Class	Human Interface Devices (HID) class
Transmission Speed	Full Speed (12Mbps)
Endpoint Specification	End point 0: Default pipe for USB configuration End point 1: Interrupt Out pipe for command End point 2: Interrupt In pipe for response

2.2 USB Descriptors

2.2.1 Device Descriptor

The following table shows the Device Descriptor. It has only one configuration. All the data are returned filled in “little endian” format. (i.e. least significant byte first)

Offset	Field	Size	Value	Description
0	bLength	1	12h	Descriptor size (Fixed)
1	bDescriptor	1	01h	Descriptor type (Fixed)
2	bcdUSB	2	0200h	Compliant to USB 2.0
4	bDeviceClass	1	00h	Class is none
5	bDeviceSubClass	1	00h	Sub class is none
6	bDeviceProtocol	1	00h	Using the vendor specific protocol
7	bMaxPacketSize0	1	40h	Packet size of endpoint 0 is 64 bytes
8	idVendor	2	0590h	Vendor ID
10	idProduct	2	0035h	Product ID
12	bcdDevice	2	0104h	Release number
14	iManufacture	1	01h	The index of string descriptor of the manufacture
15	iProduct	1	02h	The index of string descriptor of the product
16	iSerialNumber	1	00h	Serial number
17	bNumConfigurations	1	01h	The number of configurations (have only one)

2.2.2 Configuration Descriptor

The following table shows the Configuration Descriptor. It has only one interface.

Offset	Field	Size	Value	Description
0	bLength	1	09h	Descriptor size (Fixed)
1	bDescriptor	1	02h	Descriptor type (Fixed)
2	wTotalLength	2	0029h	The total length of the descriptors
4	bNumInterface	1	01h	The number of interfaces (have only one)
5	bConfigurationValue	1	01h	The index of this descriptor (more than 1)
6	iConfiguration	1	02h	The index of string descriptor of the configuration
7	bmAttribute	1	40h	Self powered
8	bMaxPower	1	32h	Max power is 100mA

2.2.3 Interface Descriptor

The following table shows the Interface Descriptor. It has two endpoints.

Offset	Field	Size	Value	Description
0	bLength	1	09h	Descriptor size (Fixed)
1	bDescriptorType	1	04h	Descriptor type (Fixed)
2	bInterfaceNumber	1	00h	The index of this interface
3	bAlternateSetting	1	00h	The index to select of 'SetInterface'
4	bNumEndpoints	1	02h	The number of endpoints
5	bInterfaceClass	1	03h	Class code is HID class
6	bInterfaceSubClass	1	00h	No Sub class code
7	bInterfaceProtocol	1	00h	Protocol code is vender specific
8	iInterface	1	00h	The index of this interface

2.2.4 HID Descriptor

The C/R Series is the Human Interface Devices (HID). The following table shows the HID Descriptor.

Offset	Field	Size	Value	Description
0	bLength	1	09h	Descriptor size (Fixed)
1	bDescriptorType	1	21h	Descriptor type (Fixed)
2	bcdHID	2	0111h	Supports HID 1.1
3	bCountryCode	1	00h	Not Supported
4	bNumbDescriptors	1	01h	Number of HID class descriptors to follows.
5	bDescriptorType	1	22h	Report descriptor type
6	wDescriptorLength	2	0151h	The length of report descriptor

2.2.5 Endpoint Descriptor

The C/R has two endpoints to communicate the host machine. One is interrupt-in and the other is interrupt-out.

(1) Command pipe Interrupt-Out Endpoint

The Interrupt-Out Endpoint is used to send the commands and transfer the data from the host to the device.

Offset	Field	Size	Value	Description
0	bLength	1	07h	Descriptor size (Fixed)
1	bDescriptorType	1	05h	Descriptor type (Fixed)
2	bEndPointAddress	1	01h	Address is 01h (EP1) and transfer is Out direction
3	bmAttributes	1	03h	This is an Interrupt Endpoint
4	wMaxPacketSize	2	0040h	Maximum data transfer size 64 bytes
6	bInterval	1	05h	The polling time is 5 msec

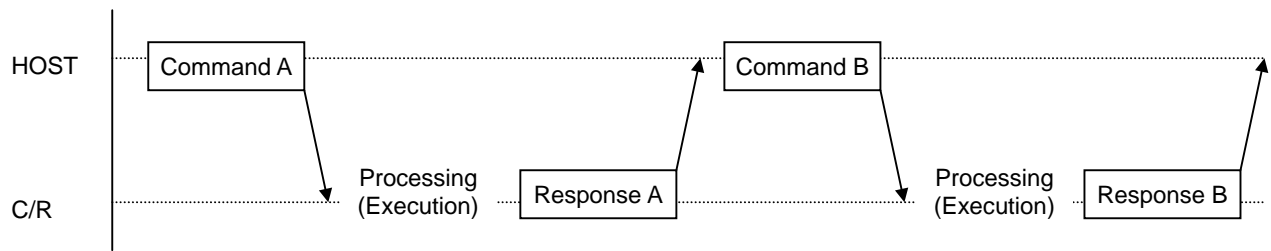
(2) Response pipe Interrupt-In Endpoint

The Interrupt-In Endpoint is used to respond with and transfer the data from the device to the host in reply to the commands received on the Command Pipe.

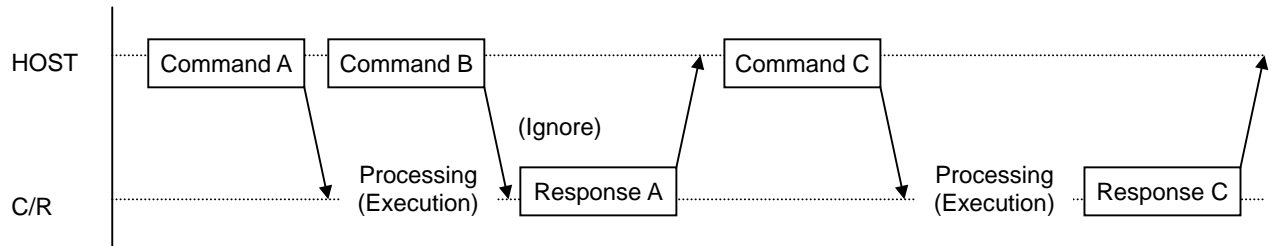
Offset	Field	Size	Value	Description
0	bLength	1	07h	Descriptor size (Fixed)
1	bDescriptorType	1	05h	Descriptor type (Fixed)
2	bEndPointAddress	1	82h	Address is 82h (EP2) and transfer is In direction
3	bmAttributes	1	03h	This is an Interrupt Endpoint
4	wMaxPacketSize	2	0040h	Maximum data transfer size 64 bytes
6	bInterval	1	05h	The polling time is 5 msec

2.3 Transmission Sequence

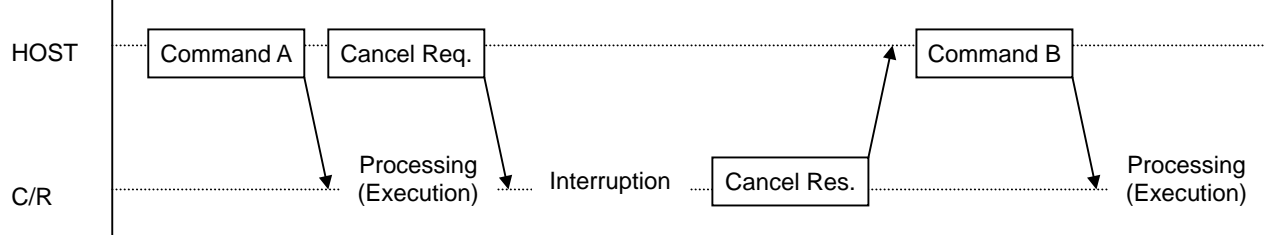
2.3.1 Normal Sequence



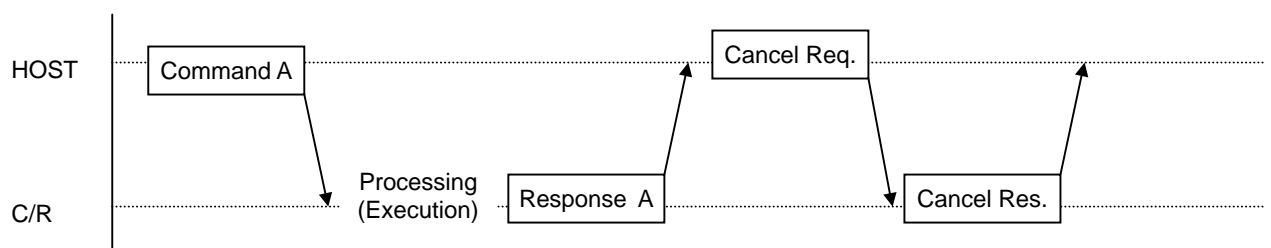
2.3.2 Abnormal Sequence



2.3.3 Cancel Sequence (1)



2.3.4 Cancel Sequence (2)



3. Encryption Specifications

3.1 Concept

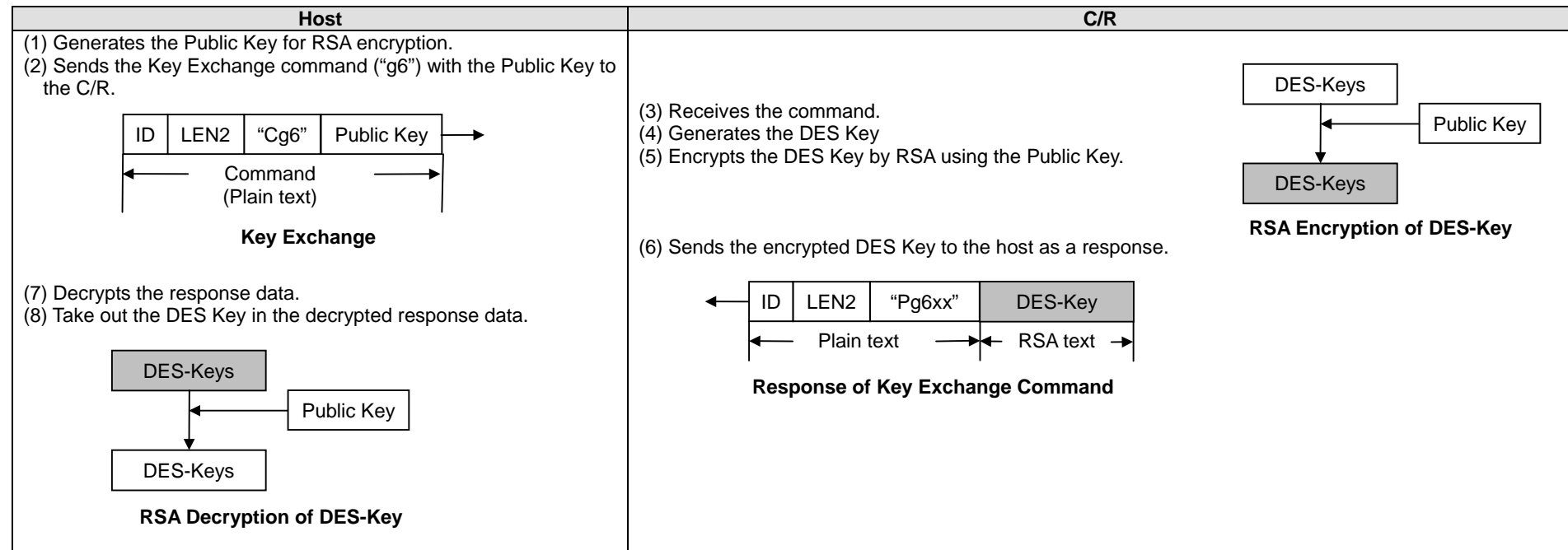
The C/R has the encryption and decryption function of all transaction data in order to prevent them from being stolen by the other device. It transmits the encrypted data to the host through the Interrupt In pipe or Interrupt Out pipe in the Report form of USB specification.

- The encryption is the RSA and the single DES.
- First, the C/R exchanges the DES Keys by the RSA.
- All transmission data is decrypted and encrypted by the DES after exchanging the DES Keys.

3.2 Key Exchange Sequence

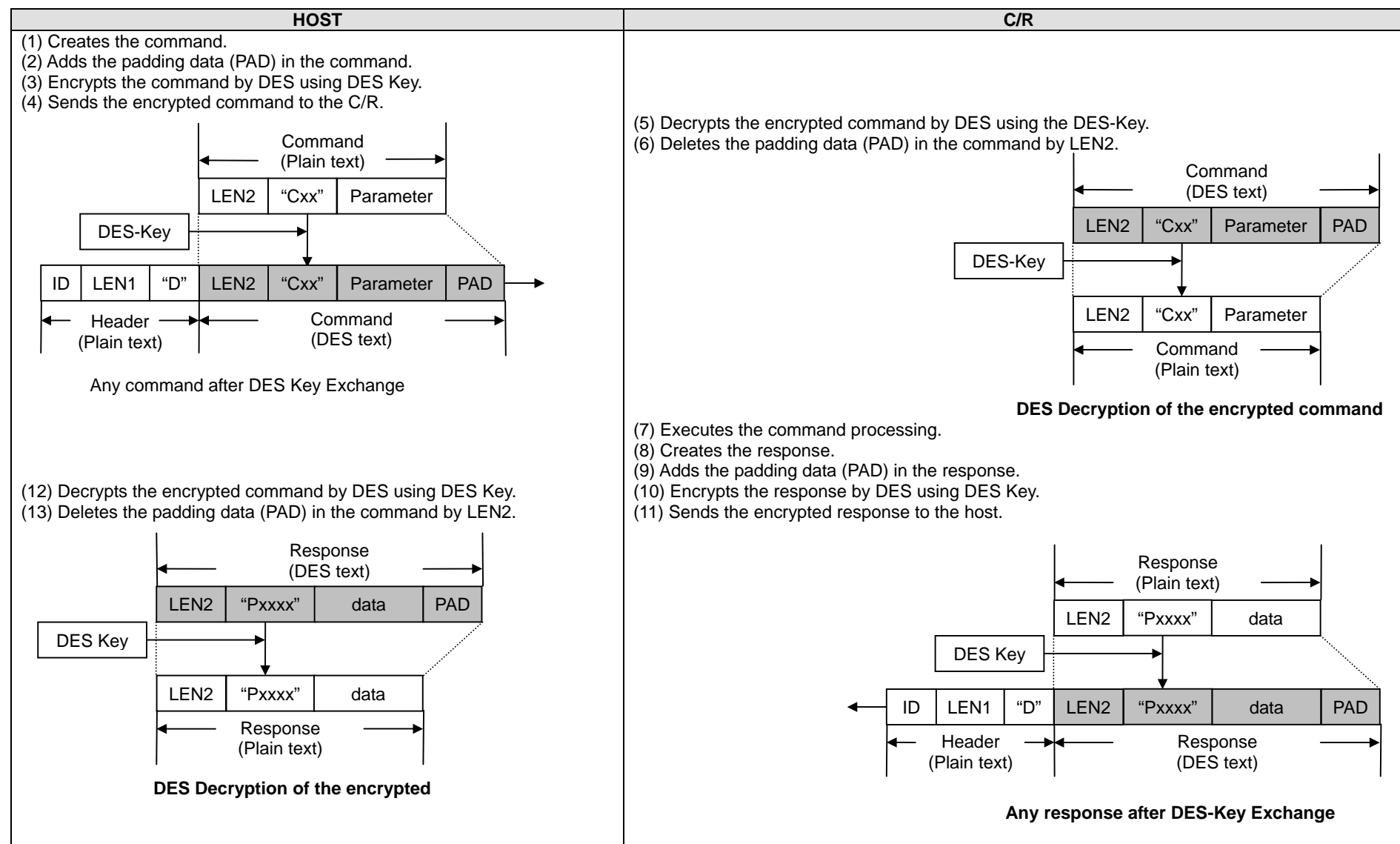
Step 1: Exchanging the DES Key (After power on)

After the power on (after the Plug & Play), the C/R exchanges the DES Key for the encryption of the transaction data by the RSA.



Step 2: Encrypt Data Transmission during the transaction

After exchanging the DES Key (Step 1), the C/R and the host encrypt all transaction data by DES and transmit them.



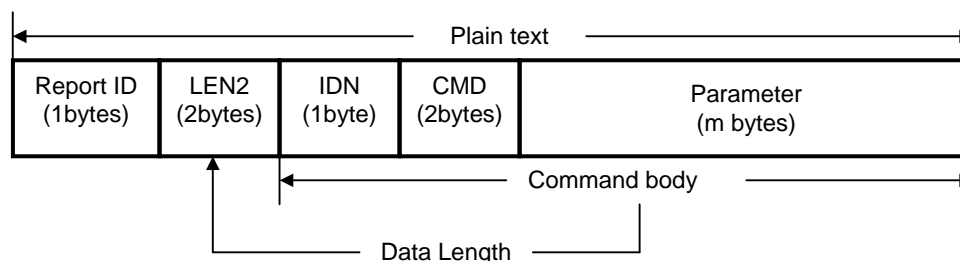
4. Message Specifications

Each line in the tables is specified as shown below:

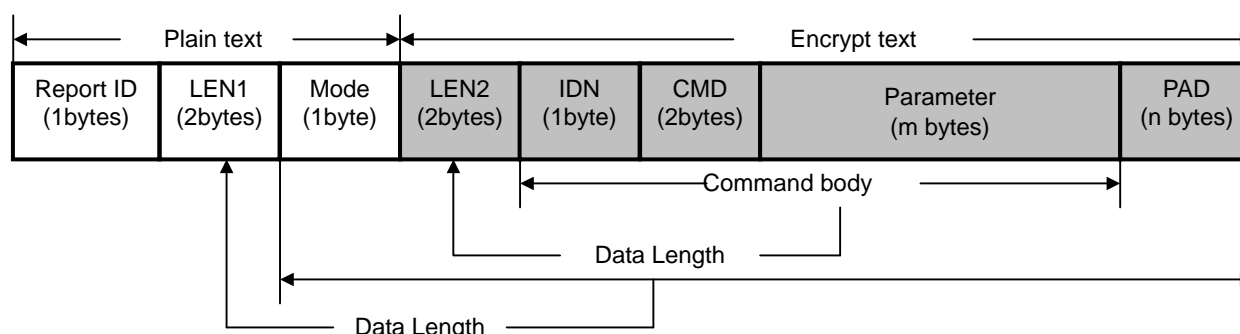
4.1 Command Format (HOST -> C/R)

The host sends the data to the C/R in the following format:

(3) Plain Text Format (Key Exchange command only)



(4) Encrypt Text Format (Any command except Key Exchange command)



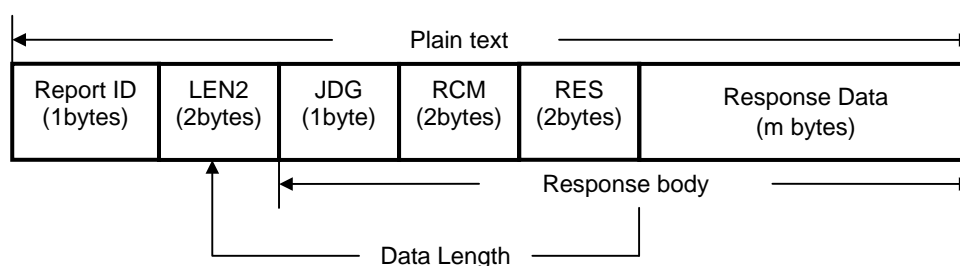
Field	Length	Value(s)	Meaning
Report ID	1	01h~09H	Report ID
LEN1	2	Below Table	Length from "Mode" to "PAD"
MODE	1	"D" (44h)	Encrypt Mode
LEN2	2	Below Table	Length from "IDN" ("C") to "Parameter"
IDN	1	"C" (43h)	Indicates Command
CMD	2	xxxxh	Specifies a command.
Parameters	0~2315	xxxxh	Command parameter. Depends on CMD
PAD	0~2315	xxxxh	Padding Data so that the data from LEN2 to PAD become multiple of 8.

Report ID	LEN1	LEN2
01h	0001h (1 bytes)	---
02h	0009h (9 bytes)	0000h~0006h (0~6 bytes)
03h	0011h (17 bytes)	0000h~000Eh (0~14 bytes)
04h	0021h (33 bytes)	0000h~001Eh (0~30 bytes)
05h	0049h (73 bytes)	0000h~0046h (0~70 bytes)
06h	0089h (137 bytes)	0000h~0086h (0~134 bytes)
07h	0109h (265 bytes)	0000h~0106h (0~262 bytes)
08h	0171h (369 bytes)	0000h~016Eh (0~366 bytes)
09h	0911h (2321 bytes)	0000h~090Eh (0~2318 bytes)

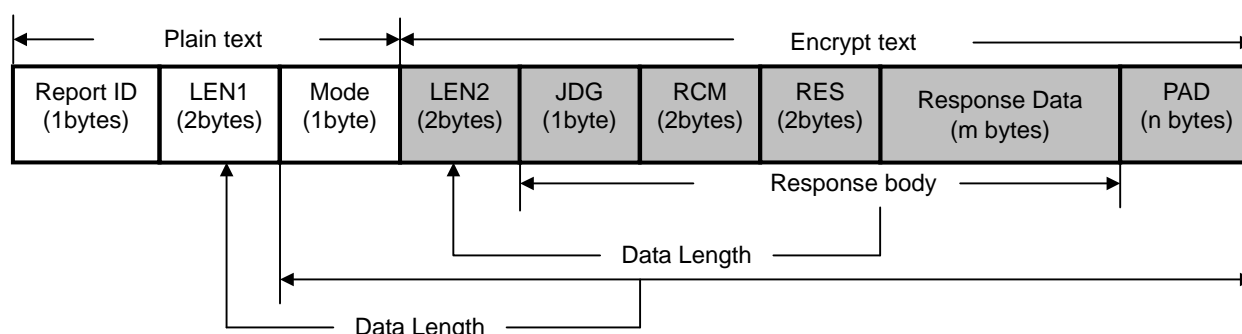
4.2 Response Format (C/R -> HOST)

The host receives the data from the C/R in the following format.

(1) Plain Text Format (Response of Key Exchange command only)



(2) Encrypt Text Format (Response of Any command except Key Exchange command)

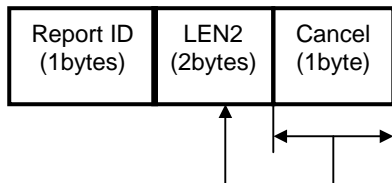


Field	Length	Value(s)	Mean
Report ID	1	01h~09h	Report ID
LEN1	2	Below Table	Length from "Mode" to "PAD"
MODE	1	"D" (44h)	Encrypt Mode
LEN2	2	Below Table	Length from "JDG" ("P" or "N") to "Response Data"
JDG	1	"P" (50h)	Specifies a positive response that the process was normally completed.
	1	"N" (4Eh)	Specifies a negative response that the process was abnormally completed.
RCM	2	Xxxxh	Same code as the command (CMD).
RES	2	Xxxxh	If JDG is P, RES specifies the position of a card. If JDG is N, RES specifies an error resulted from the command process.
Response Data	0~1001	Xxxxh	The data obtained by processing a command. Some responses do not have any response data.
PAD	0~1001	Xxxxh	Padding Data so that the data from LEN2 to PAD become multiple of 8.

Report ID	LEN1	LEN2
01h	0001h (1 bytes)	---
02h	0009h (9 bytes)	0000h~0006h (0~6 bytes)
03h	0011h (17 bytes)	0000h~000Eh (0~14 bytes)
04h	0021h (33 bytes)	0000h~001Eh (0~30 bytes)
05h	0049h (73 bytes)	0000h~0046h (0~70 bytes)
06h	0089h (137 bytes)	0000h~0086h (0~134 bytes)
07h	0109h (265 bytes)	0000h~0106h (0~262 bytes)
08h	0171h (369 bytes)	0000h~016Eh (0~366 bytes)
09h	03F1h (1009 bytes)	0000h~03EEh (0~1006 bytes)

4.3 Cancel Request Format

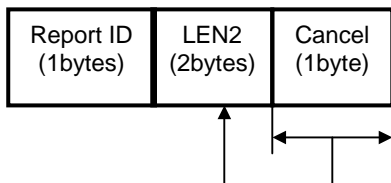
If the host wants to cancel the command processing, the host should send a cancel request to the C/R.
The format of Cancel Request is as follows:



Field	Length	Value(s)
Report ID	1	xxh
LEN1	2	0001h
Cancel	1	"E" (45h)

4.4 Cancel Response Format

When the C/R has interrupted the command processing in response to the cancel request, it sends the cancel response to the host in the following format:



Field	Length	Value(s)
Report ID	1	xxh
LEN1	2	0001h
Cancel	1	"E" (45h)

5. Command Tables

5.1 Basic Commands

Command Name	CMD (ASCII)	Function	Ref
Key Exchange	"g6"	Sets the RSA Public key and reads the encrypted DES Key. And starts encrypted data communication.	7.1
Initial Reset	"00"	Initializes the C/R.	7.2
C/R Status Sense	"10"	Reads the C/R status.	7.3
C/R Sensors Sense	"11"	Reads the sensors status.	7.4
Transaction Setting	".6"	Sets the magnetic read method and the lock timing.	7.68
Card Status Monitoring	"92"	Monitors the C/R status.	7.10
ISO#1 Read	"61"	Sends the ISO #1 read data.	7.5
ISO#2 Read	"62"	Sends the ISO #2 read data.	7.6
ISO#3 Read	"63"	Sends the ISO #3 read data.	7.7
Multi-track Read	"6a"	Sends the multiple tracks data.	7.8
Read Data Clear	"6s"	Clears the read buffer.	7.9
LED OFF	"P6"	Turns off the LED.	7.31
LED ON	"P7"	Turns on the LED. (Green, Red or Orange)	7.32
LED Blinking	"P8"	Blinks the LED. (Green, Red or Orange)	7.33
Error Log Read	"J0"	Reads the local error log.	7.27
Sensor Level Read	"L0"	Reads the voltage of sensors.	7.28
Life Counter Read	"M0"	Reads the number of movement of each part of the C/R.	7.29
Option Read	"N0"	Reads the information of options installed.	7.29
Main FW Version	"V0"	Reads the FW version.	7.34
ICC FW Version	"V1"	Reads the FW version of ICC control part.	7.35
SAM FW Version	"V2"	Reads the FW version of SAM control part.	7.36
User Information for Main FW	"u0"	Reads the user information for standard FW.	7.66
User Information for Partial FW	"u1"	Reads the user information for partial FW (ICC or SAM FW).	7.67

5.2 ICC Commands

Command Name	CMD (ASCII)	Function	Ref
Lock	"C0"	Sets the lock.	7.11
Unlock	"C1"	Releases the lock.	7.12
ICC Activation	"C2"	Activates ICC. (Initiates a cold reset.)	7.13
ICC Deactivation	"C3"	Deactivates ICC.	7.14
ICC Cold Reset	"E0"	Activates ICC. (Initiates a cold reset.) Then executes the PPS request, If possible.	7.17
ICC Warm Reset	"E1"	Activates the ICC. (Initiates a warm reset.) Then executes the PPS request, If possible.	7.18
ICC Multiple Processing	"C5"	Lock + ICC Activation ("C0"+"C2")	7.15
	"C6"	ICC Deactivation + Unlock ("C3"+"C1")	7.16
	"G1"	Lock + ICC Cold Reset ("C0"+"E0")	7.26
T=0 Transmission	"F0"	Transmits the data to ICC on T=0 protocol.	7.19
T=1 Transmission	"F1"	Transmits the data to ICC on T=1 protocol.	7.20
T=1 Chaining Transmission	"F2"	Sends the chained data to ICC on T=1 protocol.	7.21
T=1 Chaining Reception	"F3"	Receives the chained data from ICC on T=1 protocol.	7.22
T=1 Chaining Cancel	"F4"	Cancels the chaining transmission on T=1 protocol.	7.23
PPS Request	"F8"	Executes a PPS request.	7.24
T=0 / T=1 Transmission	"FC"	Transmits the data to ICC on T=0 or T=1 protocol. The protocol type is automatically determined.	7.25

5.3 SAM Commands

Command Name	CMD (ASCII)	Function	Ref
SAM Status Sense	"e0"	Reads SAM status.	7.48
SAM Activation	"e1"	Activates SAM. (Initiates a cold reset.)	7.49
SAM Deactivation	"e2"	Deactivates SAM.	7.50
SAM Cold Reset	"e3"	Activates SAM. (Initiates a cold reset.) Then executes the PPS request, If possible.	7.51
SAM Warm Reset	"e4"	Activates SAM. (Initiates a warm reset.) Then executes the PPS request, If possible.	7.52
T=0 Transmission	"f0"	Transmits the data to SAM on T=0 protocol.	7.53
T=1 Transmission	"f1"	Transmits the data to SAM on T=1 protocol.	7.54
T=1 Chaining Transmission	"f2"	Sends the chained data to SAM on T=1 protocol.	7.55
T=1 Chaining Reception	"f3"	Receives the chained data from SAM on T=1 protocol.	7.56
T=1 Chaining Cancel	"f4"	Cancels the chaining transmission on T=1 protocol.	7.57
PPS Request	"f8"	Executes a PPS request.	7.58
T=0 / T=1 Transmission	"fC"	Transmits the data to SAM on T=0 or T=1 protocol. The protocol type is automatically determined.	7.59

5.4 Protocol Handling for ICC & SAM

Command Name	CMD (ASCII)	Function	Ref
ICC and SAM Control Information	"Y0"	Reads the control information of ICC and SAM.	7.37
	"Y2"	Sets the monitoring time for waiting for reception used in the commands related to ICC and SAM.	7.38
	"Y3"	Sets the IFSD control method used in the commands related to ICC and SAM.	7.39
	"Y4"	Sets the TCK control method used in the commands related to ICC and SAM.	7.40
	"Y5"	Sets the ICC supply voltage (5V/3V) in the commands related to ICC.	7.41
	"Y6"	Sets the reference standard used in the commands related to ICC.	7.42
	"Y7"	Sets the reference standard used in the commands related to SAM.	7.43

5.5 Memory Card Handling

Command Name	CMD (ASCII)	Function	Ref
Activation	"m2"	Activates the memory card.	7.60
Deactivation	"m3"	Deactivates the memory card.	7.61
Multiple processing	"m5"	Lock + memory card activation ("C0"+"m2")	7.62
	"m6"	Memory card deactivation + Unlock ("m3"+"C1")	7.63
Transmission and Reception	"m7"	Sends and receives the data between the host and the memory card.	7.64
PSC Verification	"m8"	Executes the verification of memory card.	7.65

5.6 Download Function

Command Name	CMD (ASCII)	Function	Ref
DL Start	"d0"	Starts the DL procedure.	7.44
DL Transmission	"d1"	Sends the DL Data (FW).	7.45
DL Completion	"d2"	Completes the DL procedure.	7.46
DL Preparation	"d3"	Prepares the downloading.	7.47

6. Response Table

6.1 Table of Positive Response Status

Response statuses (RES) of Positive Response Format are shown in the table below:

RES (ASCII)	Meaning	Hardware Status		
		S1 Sensor	S2 Sensor	Lock
"00"	No card is in the C/R.	OFF	OFF	--
"01"	The card is in the C/R.	ON	OFF	--
"02"	The card is in the C/R completely.	ON	ON	OFF
"10"	The card is locked.	ON	ON	ON
"11"	The IC card is activated.	ON	ON	ON
"20"	Transmission with ICC Completion (With/ without Reception Data, with SW1 + SW2)	ON	ON	ON
"21"	In the process of Continuous Reception from ICC (With Reception Data, without SW1 + SW2)	ON	ON	ON
"22"	In the process of Continuous Transmission to ICC (Without Reception Data, without SW1 + SW2)	ON	ON	ON
"23"	Abort Completion of ICC Transmission by Forced Interruption	ON	ON	ON
"30"	In the Process of Downloading	--	--	--
"31"	Downloading Normal Completion. Waiting for Initial Reset	--	--	--

6.2 Status Table of SAM Positive Response

SAM statuses (SAM RES) of SAM Positive Response Format are shown in the table below.

SAM RES (ASCII)	Meaning	Hardware Status		
		S1 Sensor	S2 Sensor	Lock
"40"	The SAM is deactivated.	--	--	--
"41"	The SAM is activated.	--	--	--
"50"	Transmission to SAM Completion (with/without Receiving Data, with SW1+SW2)	--	--	--
"51"	Continuous Reception Status from SAM (with Receiving Data, without SW1+SW2)	--	--	--
"52"	Continuous Transmission Status to SAM (without Receiving Data, without SW1+SW2)	--	--	--
"53"	Abort Completion of SAM Transmission by Forced Interruption.	--	--	--

6.3 Table of Negative Response Status (Error Code)

Response statuses (RES) of Negative Response Format are shown in the table below:

(1) Error code table

RES (ASCII)	Sorts of Error	Meaning
"00"	Reception of Undefined Command	<ul style="list-style-type: none"> The received command is not included in the specification.
"01"	Command Sequence Error	<ul style="list-style-type: none"> The received command is not available in the current state.
"02"	Command Parameter Error	<ul style="list-style-type: none"> The parameter of the received command is not appropriate.
"07"	No Exchange Key Error	<ul style="list-style-type: none"> The command except the Key Exchange command ("g6") was received before the DES Keys were not exchanged.
"08"	Not decrypt Error	<ul style="list-style-type: none"> The C/R cannot decrypt the received command.
"09"	Command Mode Error	<ul style="list-style-type: none"> The mode in the command format was not "D".
"11"	Lock Error	<ul style="list-style-type: none"> The C/R has failed to release the lock. The C/R has failed to set the lock. When the C/R was releasing the lock, the echo switch of the lock was turned off. When the C/R was setting the lock, the echo switch of the lock was turned on.
"16"	Rear Destroy Error	<ul style="list-style-type: none"> The C/R has detected the rear destroy.
"18"	Power-down Detection	<ul style="list-style-type: none"> Power down has been detected while a command (including initial reset command) was being processed or before it is processed.
"19"	Waiting for Initial Reset	<ul style="list-style-type: none"> The C/R has received a command other than the Initial Reset Commands after the power was turned on. The C/R has received a command other than the Initial Reset Commands after the C/R sent the response of Waiting for Initial Reset ("19").
"0A"	Error during Maintenance	<ul style="list-style-type: none"> The maintenance SW was pressed and C/R is performing the maintenance procedures.
"0B"	Error after Maintenance	<ul style="list-style-type: none"> The maintenance SW was pressed and the maintenance procedures have been completed.
"33"	Data Error in Flash Memory	<ul style="list-style-type: none"> The SUM value in the data stored in the flash memory is incorrect. The memory might have been destroyed. The C/R has failed to write the correct data on the flash memory.
"40"	Read Error (SS error)	<ul style="list-style-type: none"> The C/R has failed to detect the SS code in the read data.
"41"	Read Error (ES error)	<ul style="list-style-type: none"> The C/R has failed to detect the ES code after the SS code in the read data.
"42"	Read Error (VRC error)	<ul style="list-style-type: none"> Vertical parity error (VRC error) has been detected in the read data (excluding SS and ES codes).
"43"	Read Error (LRC error)	<ul style="list-style-type: none"> The next character of ES in the read data did not agree with the LRC calculation result.
"44"	Read Error (Not Encoded)	<ul style="list-style-type: none"> The read magnetic data was not encoded.
"45"	Read Error (No Data)	<ul style="list-style-type: none"> The next character of SS in the read data was ES, and the next character agreed with the LRC calculation result.
"46"	Read Error (Jitter Error)	<ul style="list-style-type: none"> Not above Read Error ("40"~"45"). More than 10 Bits = Over Permission Value of Jitter in Read Data
"49"	Read Track setting Error	<ul style="list-style-type: none"> The specified track has not been read.
"4A"	Read Error (Card Held by User)	<ul style="list-style-type: none"> When a card was inserted or pulled out, it was held by an end user.
"61"	Time-out of Intake Monitoring	<ul style="list-style-type: none"> A card was not taken in the C/R within the intake monitoring time.
"70"	Imperfect Program	<ul style="list-style-type: none"> The SUM value in the program stored in the flash memory is incorrect. The memory might have been destroyed. The C/R has received any command other than DL Command during DL. The C/R found the downloading of FW unfinished after the power was turned on.
"71"	Initial Reset Waiting after DL Completion	<ul style="list-style-type: none"> The C/R has received any command other than the Initial Reset Commands after the downloading was normally completed.
"72"	Partial Firmware Error in Flash Memory	<ul style="list-style-type: none"> The C/R has failed to extend the partial FW into Program Work Filed in the flash memory.

(2) Error code table

RES (ASCII)	Sorts of Error	Meaning
"80"	Reception from ICC Impossible	<ul style="list-style-type: none"> • The C/R has detected that receiving data from the SAM is over buffer size of the C/R in execution of T=0, T=1 protocol and PPS. • The C/R has failed to complete sending and receiving in execution of T=0, T=1 protocol and PPS when monitoring time was up.
"82"	ICC Activation Error	<ul style="list-style-type: none"> • The C/R has detected short circuit (when Vcc supply) during activation. • Time-out or parity error has occurred during activation.
"84"	ICC Communication Error	<ul style="list-style-type: none"> • Time-out or parity error has occurred in protocol T=0 or T=1 and retry has failed.
"85"	ICC Compulsory Abort Reception	<ul style="list-style-type: none"> • Compulsory abort (S (Abort, req)) has been received in protocol T=1.
"87"	Unsupported ICC	<ul style="list-style-type: none"> • ATR that the C/R does not support is received.
"88"	ICC Movement	<ul style="list-style-type: none"> • When the card is locked, the S2 Sensor is turned off.
"89"	Disagreement of Verification Code	<ul style="list-style-type: none"> • The card has failed to be verified because of disagreement of the verification code.
"8A"	Inappropriate Verification Card	<ul style="list-style-type: none"> • The card was rejected the verification. • The EC area of the card was 00h, or the protect bit in the EC area was protected.
"A0"	Reception from SAM Impossible	<ul style="list-style-type: none"> • The C/R has detected that receiving data from the SAM is over buffer size of the C/R in execution of T=0, T=1 protocol and PPS. • The C/R has failed to complete sending and receiving in execution of T=0, T=1 protocol and PPS when monitoring time was up.
"A2"	SAM Activation Error	<ul style="list-style-type: none"> • The C/R has detected short circuit (when Vcc supply) during activation. • Time-out or parity error has occurred during activation.
"A4"	SAM Communication Error	<ul style="list-style-type: none"> • Time-out or parity error has occurred in protocol T=0 or T=1 and retry has failed.
"A5"	SAM Compulsory Abort Reception	<ul style="list-style-type: none"> • Compulsory abort (S (Abort, req)) has been received in protocol T=1.
"A7"	Unsupported SAM	<ul style="list-style-type: none"> • ATR that the C/R does not support is received.
"A9"	SAM chip pull up	<ul style="list-style-type: none"> • SAM chip is pulled up during SAM activation.

7. Command Specification

7.1 (g6) Key Exchange

(1) Command

IDN (1byte)	CMD (2bytes)		CMP (66bytes)					
"C"	"g"	"6"	<1>	<2>				

CMP	Length (Bytes)	Data (BIN)	Meaning
<1>	64	xxxxxh	Public Key

The order of the public key is as follows.

Please arrange the byte order of public key by little endian (sets the least figure at the first byte).

(bytes)								Key data
0	1	2	3	4	5	6	7	
8	9	10	11	12	13	14	15	
:	:	:	:	:	:	:	:	
48	49	50	51	52	53	54	55	
56	57	58	59	60	61	62	63	

If Public key is "0x012345 ... ABCDEF" then

CMP [0] = 0xEF;

CMP [1] = 0xCD;

CMP [2] = 0xAB;

...

CMP [61] = 0x45;

CMP [62] = 0x23;

CMP [63] = 0x01;

(2) Positive Response

JDG (1byte)	RCM (2bytes)		RES (2bytes)	RDT (64bytes)				
"P"	"g"	"6"	"xx"	<1>	<2>	~	<4>	<5>

RDT	Length (Bytes)	Data (ASCII)	Meaning
<1>	8	xxxxxh	DES Key
<2>	1	00h	Fixed data
<3>	53	xxxxxh	Padding data (Random data)
<4>	1	02h	Fixed data
<5>	1	00h	Fixed data

The order of the response data including DES Key is as follows.

Please arrange the data so that MSB becomes bit0.

MSB						LSB (bits)		
0	1	2	61	62	63	Key data

MSB								LSB (bytes)	
0	1	2	3	4	5	6	7	DES Key	
8	9	10	11	12	13	14	15	Fixed data + Padding data	
16	17	18	19	20	21	22	23	Padding data	
:	:	:	:	:	:	:	:	:	
48	49	50	51	52	53	54	55	Padding data	
56	57	58	59	60	61	62	63	Padding data + Fixed data	

(3) Negative Response

JDG (1byte)	RCM (2bytes)		RES (2bytes)	
"N"	"g"	"6"	"xx"	

(4) Detailed Functions**Normal Processing**

- The C/R generates the DES Key and encrypts them by RSA using Public Key.
- It sends the encrypted DES Key to the host as a response.
- After this command, the C/R starts the encrypted data communication.

Retry and Error Processing

- When the C/R cannot decrypt the received command, it sends the **"Not decrypt Error" ("N08")** to the host as a response.

(5) Notes

- This command and the response are in the plain text format.

7.2 (00) Initial Reset (Return to Front)

(1) Command

IDN (1byte)	CMD (2bytes)	
"C"	"0"	"0"

(2) Positive Response

JDG (1byte)	RCM (2bytes)		RES (2bytes)
"P"	"0"	"0"	"xx"

(3) Negative Response

JDG (1byte)	RCM (2bytes)		RES (2bytes)
"N"	"0"	"0"	"xx"

(4) Detailed Functions

Normal Processing

- The C/R checks the lock movement and releases the lock when the S1 sensor is turned off.
- It clears the magnetic read data.
- It turns off the LED.

Error Processing

- None

7.3 (10) Status Sense (C/R Sense)

(1) Command

IDN (1byte)	CMD (2bytes)	
"C"	"1"	"0"

(2) Positive Response

JDG (1byte)	RCM (2bytes)		RES (2bytes)
"P"	"1"	"0"	"xx"

(3) Negative Response

JDG (1byte)	RCM (2bytes)		RES (2bytes)
"N"	"1"	"0"	"xx"

(4) Detailed Functions

Normal Processing

- When the C/R is normal, it sends "**C/R Status**" ("**RES**").
- If any mechanical error, the C/R sends a negative response of mechanical error.
- But when the previous command is a warning response, the C/R sends the same response as the previous one.

Error Processing

- None

7.4 (11) Status Sense (Sensor Sense)

(1) Command

IDN (1byte)	CMD (2bytes)	
"C"	"1"	"1"

(2) Positive Response

JDG (1byte)	RCM (2bytes)		RES (2bytes)	RDT (20bytes)			
"P"	"1"	"1"	"xx"	<1>	~	<5>	<6>

RDT	Length (Bytes)	Data (ASCII)	Meaning	
<1>	1	"0"	Off	S1 Sensor (Front Sensor)
		"1"	On	
<2>	1	"0"	Off	S2 Sensor (Rear Sensor)
		"1"	On	
<3>	1	"0"	Unlock	Lock Solenoid Echo
		"1"	Lock	
<4>	1	"0"	Not Destroyed	Rear Destruction Detection
		"1"	Destroyed	
<5>	1	"0"	ICC Deactivation	ICC Activation
		"1"	ICC Activation	
<6>	15	"0"	Spare	Spare

(3) Negative Response

JDG (1byte)	RCM (2bytes)		RES (2bytes)
"N"	"1"	"1"	"xx"

(4) Detailed Functions

Normal Processing

- The C/R sends the sensor status.

Error Processing

- None

7.5 (61) Magnetic Read (ISO#1)

(1) Command

IDN (1byte)	CMD (2bytes)	
"C"	"6"	"1"

(2) Positive Response

JDG (1byte)	RCM (2bytes)		RES (2bytes)	RDT (1~76bytes)
"P"	"6"	"1"	"xx"	<1>

RDT	Length (Bytes)	Data (ASCII)	Meaning
<1>	1~76	Card Data	Magnetic Read Data on ISO #1

(3) Negative Response

JDG (1byte)	RCM (2bytes)		RES (2bytes)	RDT *1 (1~104bytes)	
"N"	"6"	"1"	"4"	"6"	<1>

*1: For the jitter error ("N46"), the C/R adds the read data to this negative response, and then sends the jitter error.
For details, see below.

RDT	Length (Bytes)	Data (ASCII)	Meaning
<1>	1~76	Card Data	Magnetic Read Data in ISO #1

(4) Detailed Functions

Normal Processing

- The C/R reads the ISO#1 track data.

Error Processing

- The C/R will return the negative response with magnetic data only for the jitter error ("N46").

7.6 (62) Magnetic Read (ISO#2)

(1) Command

IDN (1byte)	CMD (2bytes)	
"C"	"6"	"2"

(2) Positive Response

JDG (1byte)	RCM (2bytes)		RES (2bytes)	RDT (1~37bytes)
"P"	"6"	"2"	"xx"	<1>

RDT	Length (Bytes)	Data (ASCII)	Meaning
<1>	1~37	Card Data	Magnetic Read Data on ISO #2

(3) Negative Response

JDG (1byte)	RCM (2bytes)		RES (2bytes)
"N"	"6"	"2"	"xx"

JDG (1byte)	RCM (2bytes)		RES (2bytes)	RDT *1 (1~37bytes)
"N"	"6"	"2"	"4"	"6"

RDT	Length (Bytes)	Data (ASCII)	Meaning
<1>	1~76	Card Data	Magnetic Read Data in ISO #2

*1: For the jitter error ("N46"), the C/R adds the read data to this negative response and then sends the jitter error.
For details, see below.

(4) Detailed Functions

Normal Processing

- The C/R reads the ISO#2 track data.

Error Processing

- The C/R will return the negative response with magnetic data only for the jitter error ("N46").

7.7 (63) Magnetic Read (ISO#3)

(1) Command

IDN (1byte)	CMD (2bytes)	
"C"	"6"	"3"

(2) Positive Response

JDG (1byte)	RCM (2bytes)		RES (2bytes)	RDT (1~104bytes)
"P"	"6"	"3"	"xx"	<1>

RDT	Length (Bytes)	Data (ASCII)	Meaning
<1>	1~104	Card Data	Magnetic Read Data on ISO #3

(3) Negative Response

JDG (1byte)	RCM (2bytes)		RES (2bytes)
"N"	"6"	"3"	"xx"

JDG (1byte)	RCM (2bytes)		RES (2bytes)	RDT *1 (1~37bytes)
"N"	"6"	"3"	"4" "6"	<1>

RDT	Length (Bytes)	Data (ASCII)	Meaning
<1>	1~104	Card Data	Magnetic Read Data in ISO #3

*1: For the jitter error ("N46"), the C/R adds the read data to this negative response and then sends the jitter error.
For details, see below.

(4) Detailed Functions

Normal Processing

- The C/R reads the ISO#3 track data.

Error Processing

- The C/R will return the negative response with magnetic data only for the jitter error ("N46").

7.8 (6a) Magnetic Read (Multiple Tracks)

(1) Command

IDN (1byte)	CMD (2bytes)		CMP (1byte)
"C"	"6"	"a"	<1>

CMP	Length (Bytes)	Data (ASCII)	Meaning
<1>	1	"1"	ISO#1
		"2"	ISO#2
		"3"	ISO#3
		"4"	ISO#1 + ISO#2
		"5"	ISO#1 + ISO#3
		"6"	ISO#2 + ISO#3
		"7"	ISO#1 + ISO#2 + ISO#3

(2) Positive Response

JDG (1byte)	RCM (2bytes)		RES (2bytes)	RDT (1~104bytes)						
"P"	"6"	"a"	"xx"	<1>	<2>	<3>	<4>	<5>	...	<10>

RDT	Length (Bytes)	Data (ASCII)	Meaning	
<1>	1	"1"~"7"	Specified track number by command.	
<2>	0 or 2	Result of Reading	ISO #1	No order: no data
<3>	0 or 2	Result of Reading	ISO #2	Normal magnetic data: "00"
<4>	0 or 2	Result of Reading	ISO #3	Magnetic data error: "4x"
<5>	0 or 3	Length	ISO #1	Not designated: no data
<6>	0 or 3	Length	ISO #2	Normal magnetic data: Magnetic Data Length
<7>	0 or 3	Length	ISO #3	Magnetic data error: "000"
<8>	0~76	Card Data	ISO #1	Not designated: no data
<9>	0~37	Card Data	ISO #2	Normal magnetic data:
<10>	0~104	Card Data	ISO #3	Magnetic data error: No data

(3) Negative Response

JDG (1byte)	RCM (2bytes)		RES (2bytes)
"N"	"6"	"a"	"xx"

JDG (1byte)		RCM (2bytes)		RES (2bytes)		RDT (1~104bytes)					
"N"	"6"	"a"	"4"	"6"	<1>	<2>	<3>	<4>	<5>	...	<10>

RDT	Length (Bytes)	Data (ASCII)	Meaning	
<1>	1	"1"~"7"	Specified track number by command.	
<2>	0 or 2	Result of Reading	ISO #1	No order: no data
<3>	0 or 2	Result of Reading	ISO #2	Normal magnetic data: "00"
<4>	0 or 2	Result of Reading	ISO #3	Magnetic data error: "4x"
<5>	0 or 3	Length	ISO #1	Not designated: no data
<6>	0 or 3	Length	ISO #2	Normal magnetic data: Magnetic Data Length
<7>	0 or 3	Length	ISO #3	Magnetic data error: "000"
<8>	0~76	Card Data	ISO #1	Not designated: no data
<9>	0~37	Card Data	ISO #2	Normal magnetic data:
<10>	0~104	Card Data	ISO #3	Magnetic data error: No data

*1: For the jitter error ("N46"), the C/R adds the read data to this negative response and then sends the jitter error.
For details, see below.

(4) Detailed Functions**Normal Processing**

- The C/R reads the magnetic data of the Multiple Track(s).

Error Processing

- The C/R will return the negative response with magnetic data only for the jitter error ("N46").

7.9 (6s) Magnetic Read Data Clear

(1) Command

IDN (1byte)	CMD (2bytes)	
"C"	"6"	"s"

(2) Positive Response

JDG (1byte)	RCM (2bytes)		RES (2bytes)
"P"	"6"	"s"	"xx"

(3) Negative Response

JDG (1byte)	RCM (2bytes)		RES (2bytes)
"N"	"6"	"s"	"xx"

(4) Detailed Functions

Normal Processing

- The C/R clears the magnetic data (ISO#1~ISO#3).

Error Processing

- None

7.10 (92) Card Status Monitoring

(1) Command

JDG (1byte)	RCM (2bytes)		RES (2bytes)
"C"	"9"	"2"	<1>

CMP	Length (Bytes)	Data (ASCII)	Meaning	
<1>	2	"01" - "99"	1~99 sec	Monitoring time (Unit = sec)
		"00"	Nothing	

(2) Positive Response

JDG (1byte)	RCM (2bytes)		RES (2bytes)	RDT (5bytes)				
"P"	"9"	"2"	"xx"	<1>	<2>	<3>	<4>	<5>

RDT	Length (Bytes)	Data (ASCII)	Meaning	
<1>	1	"0"	No Reading	ISO#1 Read Result
		"1"	Positive Reading	
		"2"	Negative Reading	
		"3"	No Read Data	
<2>	1	"0"	No Reading	ISO#2 Read Result
		"1"	Positive Reading	
		"2"	Negative Reading	
		"3"	No Read Data	
<3>	1	"0"	No Reading	ISO#3 Read Result
		"1"	Positive Reading	
		"2"	Negative Reading	
		"3"	No Read Data	
<4>	1	"0"	Spare	Spare
<5>	1	"0"	Spare	Spare

(3) Negative Response

JDG (1byte)	RCM (2bytes)		RES (2bytes)
"N"	"9"	"2"	"xx"

(4) Detailed Functions

Normal Processing

- The C/R monitors the card status (completion of magnetic read and card position change)
- It sends the response when any change of card status from the previous status is detected. At the inlet for card insertion, however, it is considered that the status has changed only when the card remains there for 1.6 seconds or longer.
- It replies with the current card status, unless the card status has changed within the monitoring time specified by the command parameter.
- It sends the latest card status when more than one card status change has been detected.

Error Processing

- None

(5) Note

- In case that the read result in the response data is "No Reading("0)", the C/R sends the "**Read Track setting Error(N49)**" as a response of the read command.
- In case that the read result in the response data is "Positive Reading("1)", the C/R sends the positive response with the read data as a response of the read command.
- In case that the read result in the response data is "Negative Reading("2)", the C/R sends the negative response as a response of the read command.
- In case that the read result in the response data is "No Reading("3)", the C/R sends the "**Not encode error (N44)**" as a response of the read command.

7.11 (C0) Lock

(1) Command

IDN (1byte)	CMD (2bytes)	
"C"	"C"	"0"

(2) Positive Response

JDG (1byte)	RCM (2bytes)		RES (2bytes)
"P"	"C"	"0"	"xx"

(3) Negative Response

JDG (1byte)	RCM (2bytes)		RES (2bytes)
"N"	"C"	"0"	"xx"

(4) Detailed Functions

Normal Processing

- The C/R sets the lock.

Error Processing

- When the C/R has failed to set the lock, it sends a "Lock Error"("N11").

7.12 (C1) Unlock

(1) Command

IDN (1byte)	CMD (2bytes)	
"C"	"C"	"1"

(2) Positive Response

JDG (1byte)	RCM (2bytes)		RES (2bytes)
"P"	"C"	"1"	"xx"

(3) Negative Response

JDG (1byte)	RCM (2bytes)		RES (2bytes)
"N"	"C"	"1"	"xx"

(4) Detailed Functions

Normal Processing

- The C/R releases the lock.

Error Processing

- When the C/R has failed to release the lock, it sends a **"Lock Error"("N11")**.

7.13 (C2) ICC Activation

(1) Command

IDN (1byte)	CMD (2bytes)		CMP (0 or 2bytes)	
"C"	"C"	"2"	<1>	<2>

CMP	Length (Bytes)	Data (ASCII)		Meaning
		Value	Default value	
<1>	0-1	"0"-"7"	"0"	NAD (Node Address) of ICC
<2>	0-1	"0"-"7"	"0"	NAD of C/R

(2) Positive Response

JDG (1byte)	RCM (2bytes)		RES (2bytes)	RDT (2~33bytes)				
"P"	"C"	"2"	"xx"	<1>	<2>	<3>	<4>	<5>

RDT	Length (Bytes)		Data (BIN)	Meaning	
<1>	1		00H-FFH	TS	Initial Character
<2>	1		00H-FFH	T0	Format Character
<3>	0~31	Undefined	00H-FFH	TA1~TDn	Interface Character
<4>		0~15	00H-FFH	T1~Tk	Historical Characters
<5>		0~1	00H-FFH	TCK	Check Character

For details, see ISO/IEC 7816-3.

(3) Negative Response

JDG (1byte)	RCM (2bytes)		RES (2bytes)
"N"	"C"	"2"	"xx"

JDG (1byte)	RCM (2bytes)		RES (2bytes)	RDT (2~33bytes)				
"N"	"C"	"2"	"8" "7"	<1>	<2>	<3>	<4>	<5>

*1: Only for **"Unsupported ATR Error"("N87")**, the C/R sends the error with the ATR information as a response.
(For details, see below)

RDT	Length (Bytes)		Data (BIN)	Meaning	
<1>	1		00H-FFH	TS	Initial Character
<2>	1		00H-FFH	T0	Format Character
<3>	0~31	Undefined	00H-FFH	TA1~TDn	Interface Character
<4>		0~15	00H-FFH	T1~Tk	Historical Characters
<5>		0~1	00H-FFH	TCK	Check Character

(4) Detailed Functions

Normal Processing

- The C/R activates the ICC (**Cold Reset**).
- It sends an ATR received from the card.
- It sets the NAD value that is used by the T=1 protocol (only when it is specified by the command parameter).

Error Processing

- When an ATR unsupported by the C/R has been received after the ICC activation, the C/R sends an ATR with an **"ATR Error"("N87")**.

7.14 (C3) ICC Deactivation

(1) Command

IDN (1byte)	CMD (2bytes)	
"C"	"C"	"3"

(2) Positive Response

JDG (1byte)	RCM (2bytes)		RES (2bytes)
"P"	"C"	"3"	"xx"

(3) Negative Response

JDG (1byte)	RCM (2bytes)		RES (2bytes)
"N"	"C"	"3"	"xx"

(4) Detailed Functions

Normal Processing

- The C/R deactivates an ICC.

Error Processing

- None

7.15 (C5) ICC Lock + Activation

(1) Command

IDN (1byte)	CMD (2bytes)		CMP (0 or 2bytes)	
"C"	"C"	"5"	<1>	<2>

CMP	Length (Bytes)	Data (ASCII)		Meaning
		Value	Default value	
<1>	0-1	"0"- "7"	"0"	NAD (Node Address) of ICC
<2>	0-1	"0"- "7"	"0"	NAD of C/R

For details, see ISO/IEC 7816-3.

(2) Positive Response

JDG (1byte)	RCM (2bytes)		RES (2bytes)	RDT (2~33bytes)				
"P"	"C"	"5"	"xx"	<1>	<2>	<3>	<4>	<5>

RDT	Length (Bytes)	Data (BIN)	Meaning	
<1>	1	00H-FFH	TS	Initial Character
<2>	1	00H-FFH	T0	Format Character
<3>	0~31	Undefined	00H-FFH	TA1~TDn
<4>		0~15	00H-FFH	T1~Tk
<5>		0~1	00H-FFH	TCK

For details, see ISO/IEC 7816-3.

(3) Negative Response

JDG (1byte)	RCM (2bytes)		RES (2bytes)
"N"	"C"	"5"	"xx"

JDG (1byte)	RCM (2bytes)		RES (2bytes)	RDT (2~33bytes)					
"N"	"C"	"5"	"8"	"7"	<2>	<3>	<4>	5>	<6>

*1: Only for the "**Unsupported ATR Error**"("N87"), the C/R sends the error with the ATR information as a response. (For details, see below)

RDT	Length (Bytes)	Data (BIN)	Meaning	
<2>	1	00H-FFH	TS	Initial Character
<3>	1	00H-FFH	T0	Format Character
<4>	0~31	Undefined	TA1~TDn	Interface Character
<5>		0~15	T1~Tk	Historical Characters
<6>		0~1	TCK	Check Character

(4) Detailed Functions**Normal Processing**

- The C/R locks the ICC.
- It activates the ICC (**Cold Reset**).
- It sends an ATR received from the card.
- It sets the NAD value that is used by the T=1 protocol (only when it is specified by the command parameter).

Error Processing

- When the C/R has failed to lock the ICC, it sends a "**Lock Error**"("N11").
- When an ATR unsupported by the C/R has been received after the ICC activation, the C/R sends an ATR with an "**ATR Error**"("N87").

7.16 (C6) ICC Deactivation + Unlock

(1) Command

IDN (1byte)	CMD (2bytes)	
"C"	"C"	"6"

(2) Positive Response

JDG (1byte)	RCM (2bytes)		RES (2bytes)
"P"	"C"	"6"	"xx"

(3) Negative Response

JDG (1byte)	RCM (2bytes)		RES (2bytes)
"N"	"C"	"6"	"xx"

(4) Detailed Functions

Normal Processing

- The C/R deactivates the ICC.
- It releases the lock.

Error Processing

- When the C/R has failed to unlock the ICC, it sends a "Lock Error"("N11").

7.17 (E0) ICC Cold Reset

(1) Command

IDN (1byte)	CMD (2bytes)		CMP (1 or 3bytes)		
"C"	"E"	"0"	<1>	<2>	<3>

CMP	Length (Bytes)	Data (ASCII)		Meaning
		Value	Default Value	
<1>	1	"0"	--	C/R executes PPS automatically after receiving ATR.
		"1"	--	C/R doesn't execute PPS automatically after receiving ATR.
<2>	0~1	"0"~"7"	"0"	NAD (Node Address) of ICC
<3>	0~1	"0"~"7"	"0"	NAD of C/R

For details, see ISO/IEC 7816-3.

(2) Positive Response

JDG (1byte)	RCM (2bytes)		RES (2bytes)	RDT (3~34bytes)					
"P"	"E"	"0"	"xx"	<1>	<2>	<3>	<4>	<5>	<6>

RDT	Length (Bytes)	Data (BIN)		Meaning	
<1>	1		"0"	Enables to execute protocol type T=0 immediately	
			"1"	Enables to execute protocol type T=1 immediately	
			"P"	Needs to select protocol type by PPS Request Commands	
			"N"	Incompletion of PPS Execution	
			"?"	Command Parameter is " No PPS Execution automatically	
<2>	1	00H-FFH		TS	Initial Character
<3>	1	00H-FFH		T0	Format Character
<4>	0~31	Undefined	00H-FFH	TA1~TDn	Interface Character
<5>		0~15	00H-FFH	T1~Tk	Historical Characters
<6>		0~1	00H-FFH	TCK	Check Character

For details, see ISO/IEC 7816-3.

(3) Negative Response

JDG (1byte)	RCM (2bytes)		RES (2bytes)
"N"	"E"	"0"	"xx"

JDG (1byte)	RCM (2bytes)		RES (2bytes)	RDT (2~33bytes)					
"N"	"E"	"0"	"8"	"7"	<2>	<3>	<4>	5>	<6>

*1: Only for the "**Unsupported ATR Error**" ("**N87**"), the C/R sends the error with the ATR information as a response. (For details, see below)

RDT	Length (Bytes)	Data (BIN)	Meaning	
<2>	1	00H-FFH	TS	Initial Character
<3>	1	00H-FFH	T0	Format Character
<4>	0~31	Undefined	TA1~TDn	Interface Character
<5>		0~15	T1~Tk	Historical Characters
<6>		0~1	TCK	Check Character

(4) Detailed Functions**Normal Processing**

- It activates the ICC (**Cold Reset**).
- It sends an ATR received from the card.
- If possible, it executes the PPS request (only when it is specified by the command parameter).
- It sets the NAD value that is used by the T=1 protocol (only when it is specified by the command parameter).

Error Processing

- When an ATR unsupported by the C/R has been received after the ICC activation, the C/R sends an ATR with an "**ATR Error**" ("**N87**").

7.18 (E1) ICC Warm Reset

(1) Command

IDN (1byte)	CMD (2bytes)		CMP (1 or 3bytes)		
"C"	"E"	"1"	<1>	<2>	<3>

CMP	Length (Bytes)	Data (ASCII)		Meaning
		Value	Default Value	
<1>	1	"0"	--	C/R executes PPS automatically after receiving ATR.
		"1"	--	C/R doesn't execute PPS automatically after receiving ATR.
<2>	0~1	"0"~"7"	"0"	NAD (Node Address) of ICC
<3>	0~1	"0"~"7"	"0"	NAD of C/R

For details, see ISO/IEC 7816-3.

(2) Positive Response

JDG (1byte)	RCM (2bytes)		RES (2bytes)	RDT (3~34bytes)					
"P"	"E"	"1"	"xx"	<1>	<2>	<3>	<4>	<5>	<6>

RDT	Length (Bytes)		Data (BIN)	Meaning	
<1>	1		"0"	Enables to execute protocol type T=0 immediately	
			"1"	Enables to execute protocol type T=1 immediately	
			"P"	Needs to select protocol type by PPS Request Commands	
			"N"	Incompletion of PPS Execution	
			"?"	Command Parameter is " No PPS Execution "	
<2>	1		00H-FFH	TS	Initial Character
<3>	1		00H-FFH	T0	Format Character
<4>	0~31	Undefined	00H-FFH	TA1~TDn	Interface Character
<5>		0~15	00H-FFH	T1~Tk	Historical Characters
<6>		0~1	00H-FFH	TCK	Check Character

For details, see ISO/IEC 7816-3.

(3) Negative Response

JDG (1byte)	RCM (2bytes)		RES (2bytes)
"N"	"E"	"1"	"xx"

JDG (1byte)	RCM (2bytes)		RES (2bytes)	RDT (2~33bytes)					
"N"	"E"	"1"	"8"	"7"	<2>	<3>	<4>	5>	<6>

*1: Only for the "**Unsupported ATR Error**" ("**N87**"), the C/R sends the error with the ATR information as a response. (For details, see below)

RDT	Length (Bytes)	Data (BIN)	Meaning	
<2>	1	00H-FFH	TS	Initial Character
<3>	1	00H-FFH	T0	Format Character
<4>	0~31	Undefined	TA1~TDn	Interface Character
<5>		0~15	T1~Tk	Historical Characters
<6>		0~1	TCK	Check Character

(4) Detailed Functions**Normal Processing**

- The C/R activates the ICC (**Warm Reset**).
- It sends an ATR received from the card.
- If possible, it executes the PPS request (only when it is specified by the command parameter).
- It sets the NAD value that is used by the T=1 protocol (only when it is specified by the command parameter).

Error Processing

- When an ATR unsupported by the C/R has been received after the ICC activation, the C/R sends an ATR with an "**ATR Error**" ("**N87**").

7.19 (F0) ICC T=0 Transmission

(1) Command

IDN (1byte)	CMD (2bytes)		CMP (4~261bytes)						
"C"	"F"	"0"	<1>	<2>	<3>	<4>	<5>	<6>	<7>

CMP	Length (Bytes)	Data (BIN)	Meaning	
<1>	1	00H~FEH	CLA	Instruction Class
<2>	1	00H~FFH	INS	Instruction Code
<3>	1	00H~FFH	P1	Instruction Parameter 1
<4>	1	00H~FFH	P2	Instruction Parameter 2
<5>	0 or 1	01H~FFH	Lc field	Number of Byte present in Command Data Field
<6>	Variable = Lc (0~255)	00H~FFH	Data field	String Byte sent in Command Data Field
<7>	0 or 1	00H~FFH	Le field	Maximum Number of Byte expected in Data Field of Response to Command

For details, see ISO/IEC 7816-4. However, the Case 1 to Case 4 in the table below are enabled.

ISO/IEC 7816-4: Annex A Transportation of APDUs by T=0				Remarks
A.1	Case 1			Enable
A.2	Case 2 short	Case 2S.1	Accepted Le	Enable
		Case 2S.2	Definitely not accepted Le	Enable
		Case 2S.3	Not accepted Le, specified La	*1
A.3	Case 3 short			Enable
A.4	Case 4 short	Case 4S.1	Not accepted Command	*1
		Case 4S.2	Accepted Command	*1
		Case 4S.3	Accepted Command with Information Added	*1
A.5	Case 2 Extended			Disable
A.6	Case 3 Extended			Disable
A.7	Case 4 Extended			Disable

*1: It is enabled to use only when ICC reference standard is "EMV3.1.1", "CB" or "ZKA".

(2) Positive Response

JDG (1byte)	RCM (2bytes)		RES (2bytes)	RDT (2~258bytes)		
"P"	"F"	"0"	"xx"	<1>	<2>	<3>

RDT	Length (Bytes)	Data (ASCII)	Meaning	
<1>	0~256	ICC Data	INF	ICC Data (Information Field)
<2>	1	ICC Data	SW1	Status-1
<3>	1	ICC Data	SW2	Status-2

For details, see ISO/IEC 7816-4.

(3) Negative Response

JDG (1byte)	RCM (2bytes)		RES (2bytes)
"N"	"F"	"0"	"xx"

(4) Detailed Functions

Normal Processing

- The C/R sends or receives data between the host and ICC using T=0 protocol.

Error Processing

- None

(5) Notes

- For Case 1, the host has to send the data to the C/R without Lc=00. The C/R sends the command parameter with Lc=00 to ICC. For details, see ISO7816-4 Annex A.
- When a **Cancel Request ("E")** is received during a command execution, the command processing is aborted **with the ICC remained activated**.

7.20 (F1) ICC T=1 Transmission

(1) Command

(1-1) Normal Transmission (Lc < or = 353 Command)

IDN (1byte)	CMD (2bytes)		CMP (4~360bytes)						
"C"	"F"	"1"	<1>	<2>	<3>	<4>	<5>	<6>	<7>

CMP	Length	Data (BIN)	Meaning	
<1>	1	00H~FEH	CLA	Instruction Class
<2>	1	00H~FFH	INS	Instruction Code
<3>	1	00H~FFH	P1	Instruction Parameter 1
<4>	1	00H~FFH	P2	Instruction Parameter 2
<5>	0, 1 or 3	01H~FFH	Lc field	Number of Byte present in Command Data Field
<6>	Variable = Lc (0~353)	00H~FFH	Data field	String Byte sent in Command Data Field
<7>	0, 1 or 3	00H~FFH	Le field	Maximum Number of Byte expected in Data Field of Response to Command

For details, see ISO/ICE 7816-4.

(1-2) The Last Block of Continuous Transmission (Lc > 353 Command)

IDN (1byte)	CMD (2bytes)		CMP (0~360bytes)						
"C"	"F"	"1"	<6>						

CMP	Length (Bytes)	Data (BIN)	Meaning	
<6>	0~360	00H~FFH	Data field	String Byte sent in Command Data Field

For details, see ISO/ICE 7816-4.

(2) Positive Response***(2-1) Transmission Completion(RES="20")***

JDG (1byte)	RCM (2bytes)		RES (2bytes)		RDT (2~320)		
"P"	"F"	"1"	"2"	"0"	<1>	<2>	<3>

RDT	Length (Bytes)	Data (ASCII)	Meaning	
<1>	0~318	ICC Data	INF	ICC Data (Information Field)
<2>	1	ICC Data	SW1	Status-1
<3>	1	ICC Data	SW2	Status-2

For details, see ISO/IEC 7816-4.

(2-2)Continuous Reception State(RES="21")

JDG (1byte)	RCM (2bytes)		RES (2bytes)		RDT (0~320bytes)	
"P"	"F"	"1"	"2"	"1"	<1>	<2>

RDT	Length (Bytes)	Data (ASCII)	Meaning	
<1>	0~320	ICC Data	INF	ICC Data (Information Field)
<2>	0 ~1	ICC Data	SW1	Status-1

For details, see ISO/IEC 7816-4.

(3) Negative Response

JDG (1byte)	RCM (2bytes)		RES (2bytes)	
"N"	"F"	"1"	"xx"	

(4) Detailed Functions**Normal Processing**

- The C/R sends or receives the data between the host and ICC using T=1 protocol.

Error Processing

- None

(5) Notes

- When a **Cancel Request("E")** is received during a command execution, the command processing is aborted **with the ICC remained activated**.

7.21 (F2) ICC T=1 Continuous Transmission

(1) Command

The first block of continuous transmission (Lc>353 command)

IDN (1byte)	CMD (2bytes)		CMP (4~360bytes)						
"C"	"F"	"2"	<1>	<2>	<3>	<4>	<5>	<6>	<7>

CMP	Length (Bytes)	Data (BIN)	Meaning	
<1>	1	00H~FEH	CLA	Instruction Class
<2>	1	00H~FFH	INS	Instruction Code
<3>	1	00H~FFH	P1	Instruction Parameter 1
<4>	1	00H~FFH	P2	Instruction Parameter 2
<5>	0, 1 or 3	01H~FFH	Lc field	Number of Byte present in Command Data Field
<6>	Variable = Lc (0~353)	00H~FFH	Data field	String Byte sent in Command Data Field
<7>	0, 1 or 3	00H~FFH	Le field	Maximum Number of Byte expected in Data Field of Response to Command

For details, see ISO/ICE 7816-4.

Lc>353 Commands Except The Top And Last

IDN (1byte)	CMD (2bytes)		CMP (0~360bytes)						
"C"	"F"	"2"	<6>						

CMP	Length (Bytes)	Data (BIN)	Meaning	
<6>	0~360	00H~FFH	Data field	String Byte sent in Command Data Field

For details, see ISO/ICE 7816-4.

(2) Positive Response

JDG (1byte)	RCM (2bytes)		RES (2bytes)	
"P"	"F"	"2"	"2"	"2"

(3) Negative Response

JDG (1byte)	RCM (2bytes)		RES (2bytes)	
"N"	"F"	"2"	"xx"	

(4) Detailed Functions

Normal Processing

- The C/R sends the chained data of T=1 protocol.

Error Processing

- None

7.22 (F3) ICC T=1 Continuous Reception

(1) Command

IDN (1byte)	CMD (2bytes)	
"C"	"F"	"3"

(2) Positive Response

Transmission Completion (RES="20")

JDG (1byte)	RCM (2bytes)		RES (2bytes)	RDT (1~320bytes)		
"P"	"F"	"3"	"2"	"0"	<1>	<2> <3>

RDT	Length (Bytes)	Data (ASCII)	Meaning	
<1>	0~318	ICC Data	INF	ICC Data (Information Field)
<2>	0-1	ICC Data	SW1	Status-1
<3>	1	ICC Data	SW2	Status-2

For details, see ISO/IEC 7816-4.

Continuous Reception Status (RES="21")

JDG (1byte)	RCM (2bytes)		RES (2bytes)	RDT (320bytes)		
"P"	"F"	"3"	"2"	"1"	<1>	<2>

RDT	Length (Bytes)	Data (ASCII)	Meaning	
<1>	319	ICC Data	INF	ICC Data (Information Field)
<2>	1	ICC Data	SW1	Status-1

For details, see ISO/IEC 7816-4.

(3) Negative Response

JDG (1byte)	RCM (2bytes)		RES (2bytes)
"N"	"F"	"3"	"xx"

(4) Detailed Functions

Normal Processing

- The C/R receives chained data of T=1 protocol.

Error Processing

- None

(5) Notes

- When a **Cancel Request("E")** is received during a command execution, the command processing is aborted **with the ICC remained activated**.

7.23 (F4) ICC T=1 Interruption Completion

(1) Command

IDN (1byte)	CMD (2bytes)	
"C"	"F"	"4"

(2) Positive Response

JDG (1byte)	RCM (2bytes)		RES (2bytes)	
"P"	"F"	"4"	"2"	"3"

(3) Negative Response

JDG (1byte)	RCM (2bytes)		RES (2bytes)	
"N"	"F"	"4"	"xx"	

(4) Detailed Functions

Normal Processing

- The C/R forcedly terminates the transmission or the receipt of the data in T=1 protocol type.

Error Processing

- None

7.24 (F8) ICC PPS Exchange

(1) Command

IDN (1byte)	CMD (2bytes)		CMP (0~1byte)
"C"	"F"	"8"	<1>

CMP	Length (Bytes)	Data (ASCII)	Meaning
<1>	0 or 1	"0"	Selection of protocol type T=0.
		"1"	Selection of protocol type T=1.

(2) Positive Response

JDG (1byte)	RCM (2bytes)		RES (2bytes)	RDT (1byte)
"P"	"F"	"8"	"xx"	<1>

RDT	Length (Bytes)	Data (ASCII)	Meaning
<1>	1	"0"	Enable to execute T=0.
		"1"	Enable to execute T=1.
		"N"	Incompletion PPS Execution

(3) Negative Response

JDG (1byte)	RCM (2bytes)		RES (2bytes)
"N"	"F"	"8"	"xx"

(4) Detailed Functions

Normal Processing

- The C/R executes a PPS request between the host and the ICC in order to change "F and D" or "Protocol type"..

Error Processing

- None

7.25 (FC) ICC T=0 / T=1 Transmission

(1) Command

IDN (1byte)	CMD (2bytes)		CMP (4~261bytes)						
"C"	"F"	"C"	<1>	<2>	<3>	<4>	<5>	<6>	<7>

CMP	Length (Bytes)	Data (BIN)	Meaning	
<1>	1	00H~FEH	CLA	Instruction Class
<2>	1	00H~FFH	INS	Instruction Code
<3>	1	00H~FFH	P1	Instruction Parameter 1
<4>	1	00H~FFH	P2	Instruction Parameter 2
<5>	0 or 1	01H~FFH	Lc field	Number of Byte present in Command Data Field
<6>	Variable = Lc (0~255)	00H~FFH	Data field	String Byte sent in Command Data Field
<7>	0 or 1	00H~FFH	Le field	Maximum Number of Byte expected in Data Field of Response to Command

For details, see ISO/IEC 7816-4. However, the Case 1 to Case 4 in the table below are enabled.

ISO/IEC 7816-4: Annex A Transportation of APDUs by T=0				Remarks
A.1	Case 1			Enable
A.2	Case 2 short	Case 2S.1	Accepted Le	Enable
		Case 2S.2	Definitely not accepted Le	Enable
		Case 2S.3	Not accepted Le, specified La	*1
A.3	Case 3 short			Enable
A.4	Case 4 short	Case 4S.1	Not accepted Command	*1
		Case 4S.2	Accepted Command	*1
		Case 4S.3	Accepted Command with Information Added	*1
A.5	Case 2 Extended			Disable
A.6	Case 3 Extended			Disable
A.7	Case 4 Extended			Disable

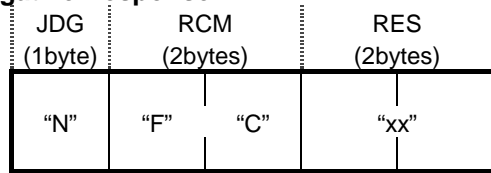
*1: It is enabled to use only when ICC reference standard is "EMV3.1.1", "CB" or "ZKA".

(2) Positive Response

JDG (1byte)	RCM (2bytes)		RES (2bytes)	RDT (2~258bytes)		
"P"	"F"	"C"	"xx"	<1>	<2>	<3>

RDT	Length (Bytes)	Data (ASCII)	Meaning	
<1>	0~256	ICC Data	INF	ICC Data (Information Field)
<2>	1	ICC Data	SW1	Status-1
<3>	1	ICC Data	SW2	Status-2

For details, see ISO/IEC 7816-4.

(3) Negative Response**(4) Detailed Functions****Normal Processing**

- The C/R sends or receives the data with ICC by T=0 or T=1 protocol.
- It determines the protocol type by analyzing ATR.

Error Processing

- None

(5) Notes

- When a **Cancel Request ("E")** is received during a command execution, the command processing is aborted **with the ICC remained activated**.

7.26 (G1) ICC Lock + Cold Reset

(1) Command

IDN (1byte)	CMD (2bytes)		CMP (1 or 3bytes)		
"C"	"G"	"1"	<1>	<2>	<3>

CMP	Length (Bytes)	Data (ASCII)		Meaning
		Value	Default Value	
<1>	1	"0"	--	C/R executes PPS automatically after receiving ATR.
		"1"	--	C/R doesn't execute PPS automatically after receiving ATR.
<2>	0~1	"0"~"7"	"0"	NAD (Node Address) of ICC
<3>	0~1	"0"~"7"	"0"	NAD of C/R

For details, see ISO/IEC 7816-3.

(2) Positive Response

JDG (1byte)	RCM (2bytes)		RES (2bytes)	RDT (3~34bytes)					
"P"	"G"	"1"	"xx"	<1>	<2>	<3>	<4>	<5>	<6>

RDT	Length (Bytes)	Data (BIN)		Meaning	
<1>	1	"0"		Enables to execute protocol type T=0 immediately	
		"1"		Enables to execute protocol type T=1 immediately	
		"P"		Needs to select protocol type by PPS Request Commands	
		"N"		Incompletion of PPS Execution	
		"?"		Command Parameter is " No PPS Execution "	
<2>	1	00H-FFH		TS	Initial Character
<3>	1	00H-FFH		T0	Format Character
<4>	0~31	Undefined	00H-FFH	TA1~TDn	Interface Character
<5>		0~15	00H-FFH	T1~Tk	Historical Characters
<6>		0~1	00H-FFH	TCK	Check Character

For details, see ISO/IEC 7816-3.

(3) Negative Response

JDG (1byte)	RCM (2bytes)		RES (2bytes)
"N"	"G"	"1"	"xx"

JDG (1byte)	RCM (2bytes)		RES (2bytes)	RDT (2~33bytes)					
"N"	"G"	"1"	"8"	"7"	<2>	<3>	<4>	<5>	<6>

*1: Only for the "**Unsupported ATR Error**" ("**N87**"), the C/R sends the error with the ATR information as a response. (For details, see below)

RDT	Length (Bytes)		Data (BIN)	Meaning	
<2>	1		00H-FFH	TS	Initial Character
<3>	1		00H-FFH	T0	Format Character
<4>	0~31	Undefined	00H-FFH	TA1~TDn	Interface Character
<5>		0~15	00H-FFH	T1~Tk	Historical Characters
<6>		0~1	00H-FFH	TCK	Check Character

(4) Detailed Functions**Normal Processing**

- The C/R locks the ICC.
- It activates the ICC (**Cold Reset**).
- It sends an ATR received from the card.
- If possible, it executes the PPS request (only when it is specified by the command parameter).
- It sets the NAD value that is used by the T=1 protocol (only when it is specified by the command parameter).

Error Processing

- When the C/R has failed to lock the ICC, it sends a "**Lock Error**" ("**N11**").
- When an ATR unsupported by the C/R is received after the ICC activation, the C/R sends an ATR with an "**ATR Error**" ("**N87**").

7.27 (J0) Local Error Log

(1) Command

IDN (1byte)	CMD (2bytes)	
"C"	"J"	"0"

(2) Positive Response

JDG (1byte)	RCM (2bytes)		RES (2bytes)	RDT (0~1000bytes)			
"P"	"J"	"0"	"xx"	<1>	<2>	...	<200>

RDT	Length (Bytes)	Data (ASCII)	Meaning	
<1>	5	2	RCM	Received command
		2	RES	Error code
		1	DATA	Error Track Number
<2>	5	2	RCM	Received command
		2	RES	Error code
		1	DATA	Error Track Number
:	:	:	:	:
<200>	5	2	RCM	Received command
		2	RES	Error code
		1	DATA	Error Track Number

(3) Negative Response

JDG (1byte)	RCM (2bytes)		RES (2bytes)
"N"	"J"	"0"	"xx"

(4) Detailed Functions

Normal Processing

- The C/R returns up to 200 error log information from the top of local error log information.

Error Processing

- None

7.28 (L0) Sensor Level Read

(1) Command

IDN (1byte)	CMD (2bytes)	
"C"	"L"	"0"

(2) Positive Response

JDG (1byte)	RCM (2bytes)		RES (2bytes)	RDT (8bytes)			
"P"	"L"	"0"	"xx"	<1>	<2>	<3>	<4>

RDT	Length (Bytes)	Data (ASCII)		Meaning	
1	2	"00"~"33"	0.0~3.3V	Sensor S1 (Front Sensor)	Sensor Voltage
2	2	"00"~"33"	0.0~3.3V	Sensor S2 (Rear Sensor)	
3	2	"00"~"33"	0.0~3.3V	Echo Sensor of Lock	
4	2	Spare	-	Extra	

(3) Negative Response

JDG (1byte)	RCM (2bytes)		RES (2bytes)
"N"	"L"	"0"	"xx"

(4) Detailed Functions

Normal Processing

- The C/R reads the voltage of each sensor in the C/R.

Error Processing

- None

7.29 (M0) Life Counter Read

(1) Command

IDN (1byte)	CMD (2bytes)	
"C"	"M"	"0"

(2) Positive Response

JDG (1byte)	RCM (2bytes)		RES (2bytes)	RDT (160bytes)			
"P"	"M"	"0"	"xx"	<1>	<2>	...	<20>

RDT	Length (Bytes)	Data (ASCII)	Meaning
<1>	8	"00000000" - "16777215"	Number of Insertion read
<2>	8	"00000000" - "16777215"	Number of Back read
<3>	8	"00000000" - "16777215"	Number of Lock
<4>	8	"00000000" - "16777215"	Number of ISO #1 insertion read error occurrence
<5>	8	"00000000" - "16777215"	Number of ISO #2 insertion read error occurrence
<6>	8	"00000000" - "16777215"	Number of ISO #3 insertion read error occurrence
<7>	8	"00000000"	Spare 1
<8>	8	"00000000"	Spare 2
<9>	8	"00000000" - "16777215"	Number of ISO #1 back read error occurrence
<10>	8	"00000000" - "16777215"	Number of ISO #2 back read error occurrence
<11>	8	"00000000" - "16777215"	Number of ISO #3 back read error occurrence
<12>	8	"00000000"	Spare 3
<13>	8	"00000000" - "16777215"	Number of IC activation error occurrence
<14>	8	"00000000" - "16777215"	Number of IC communication error
<15>	8	"00000000" - "16777215"	Number of SAM activation error occurrence
<16>	8	"00000000" - "16777215"	Number of SAM communication error
<17>	8	"00000000"	Spare 4
<18>	8	"00000000"	Spare 5
<19>	8	"00000000"	Spare 6
<20>	8	"00000000"	Spare 7

(3) Negative Response

JDG (1byte)	RCM (2bytes)		RES (2bytes)
"N"	"M"	"0"	"xx"

(4) Detailed Functions

Normal Processing

- The C/R reads each life counter in the memory.

Error Processing

- None

7.30 (N0) Option Read

(1) Command

IDN (1byte)	CMD (2bytes)	
"C"	"N"	"0"

(2) Positive Response

JDG (1byte)	RCM (2bytes)		RES (2bytes)	RDT (32bytes)						
"P"	"N"	"0"	"xx"	<1>	<2>	<3>	<4>	...	<11>	

RDT	Length (Bytes)	Data (ASCII)	Meaning	
<1>	1	"0"	Spare	Spare
<2>	1	"0"	Without Lock	Presence of Lock
		"1"	With Lock	
<3>	1	"1"	Spare	Spare
<4>	1	"0"	No head	ISO #1 head type
		"1"	Read-only	
<5>	1	"0"	No head	ISO #2 head type
		"1"	Read-only	
<6>	1	"0"	No head	ISO #3 head type
		"1"	Read-only	
<7>	14	"0"	Spare	Whether the SAM socket is open or not
<8>	1	"0"	Without SAM board	
		"2"	With SAM board	Presence of SAM board
<9>	1	"0"	Socket is open	
		"1"	Socket is closed	Whether the SAM socket is open or not
<10>	4	"0"	Spare	Spare
<11>	6	"?"	Spare	Spare

(3) Negative Response

JDG (1byte)	RCM (2bytes)		RES (2bytes)
"N"	"N"	"0"	"xx"

(4) Detailed Functions

Normal Processing

- The C/R reads the information of the installed options.

Error Processing

- None

7.31 (P6) LED OFF

(1) Command

IDN (1byte)	CMD (2bytes)	
"C"	"P"	"7"

(2) Positive Response

JDG (1byte)	RCM (2bytes)		RES (2bytes)
"P"	"P"	"7"	"xx"

(3) Negative Response

JDG (1byte)	RCM (2bytes)		RES (2bytes)
"N"	"P"	"7"	"xx"

(4) Detailed Functions

Normal Processing

- The C/R turns off the LED.

Error Processing

- None

7.32 (P7) LED ON

(1) Command

IDN (1byte)	CMD (2bytes)		CMP (1byte)
"C"	"P"	"7"	<1>

CMP	Length (Bytes)	Data (ASCII)	Meaning
<1>	1	"1"	Green
		"2"	Red
		"3"	Orange

(2) Positive Response

JDG (1byte)	RCM (2bytes)		RES (2bytes)
"P"	"P"	"7"	"xx"

(3) Negative Response

JDG (1byte)	RCM (2bytes)		RES (2bytes)
"N"	"P"	"7"	"xx"

(4) Detailed Functions

Normal Processing

- The C/R turns on the LED. The LED color is specified by the command parameter.

Error Processing

- None

7.33 (P8) LED Blinking

(1) Command

IDN (1byte)	CMD (2bytes)		CMP (2bytes)	
"C"	"P"	"8"	<1>	<2>

CMP	Length (Bytes)	Data (ASCII)	Meaning	
<1>	1	"1"	Green	LED Color
		"2"	Red	
		"3"	Orange	
<2>	1	"0"	4 Hz	Blinking Cycle
		"1"	2 Hz	
		"2"	1 Hz	
		"3"	1/2 Hz	
		"4"	1/4 Hz	

(2) Positive Response

JDG (1byte)	RCM (2bytes)		RES (2bytes)
"P"	"P"	"8"	"xx"

(3) Negative Response

JDG (1byte)	RCM (2bytes)		RES (2bytes)
"N"	"P"	"8"	"xx"

(4) Detailed Functions

Normal Processing

- The C/R blinks the LED according to the command parameter.

Error Processing

- None

7.34 (V0) FW Version Read (ROM and Total FW)

(1) Command

IDN (1byte)	CMD (2bytes)	
"C"	"V"	"0"

(2) Positive Response

JDG (1byte)	RCM (2bytes)		RES (2bytes)	RDT (62bytes)			
"P"	"V"	"0"	"xx"	<1>	<2>	...	<9>

RDT	Length (Bytes)	Data (ASCII)	Meaning
<1>	12	"AAAAAAAAAAAA"	FW Type in CPU ROM
<2>	2	"AA"	FW Version in CPU ROM
<3>	6	"000000"~"FFFFFF"	SUM Value of FW in CPU ROM
<4>	12	Spare	Spare
<5>	2	Spare	Spare
<6>	6	Spare	Spare
<7>	12	"AAAAAAAAAAAA"	Total FW Type in Flash Memory
<8>	2	"AA"	Total FW Version in Flash Memory
<9>	8	"00000000"~"FFFFFFF"	SUM Value of Total FW in Flash Memory

(3) Negative Response

JDG (1byte)	RCM (2bytes)		RES (2bytes)
"N"	"V"	"0"	"xx"

JDG (1byte)	RCM (2bytes)		RES (2bytes)	RDT (62bytes)			
"N"	"V"	"0"	"7" "0"	<1>	<2>	...	<9>

RDT	Length (Bytes)	Data (ASCII)	Meaning
<1>	12	"AAAAAAAAAAAA"	FW Type in CPU ROM
<2>	2	"AA"	FW Version in CPU ROM
<3>	6	"000000"~"FFFFFF"	SUM Value of FW in CPU ROM
<4>	12	Spare	Spare
<5>	2	Spare	Spare
<6>	6	Spare	Spare
<7>	12	Spare	Total FW Type in Flash Memory
<8>	2	Spare	Total FW Version in Flash Memory
<9>	8	Spare	SUM Value of Total FW in Flash Memory

(4) Detailed Functions

Normal Processing

- The C/R reads the FW information (Type, Version and Sum value) in the CPU ROM and the flash memory.

Error Processing

- None

7.35 (V1) FW Version Read (ICC FW)

(1) Command

IDN (1byte)	CMD (2bytes)	
"C"	"V"	"1"

(2) Positive Response

JDG (1byte)	RCM (2bytes)		RES (2bytes)	RDT (20bytes)		
"P"	"V"	"1"	"xx"	<1>	<2>	<3>

RDT	Length (Bytes)	Data (ASCII)	Meaning
<1>	12	"AAAAAAAAAAAA"	FW type in Memory
<2>	2	"AA"	FW Version in Memory
<3>	6	"000000"~"FFFFFF"	SUM Value in Memory

(3) Negative Response

JDG (1byte)	RCM (2bytes)		RES (2bytes)
"N"	"V"	"1"	"xx"

(4) Detailed Functions

Normal Processing

- The C/R reads the ICC FW information (Type, Version and Sum value) in the flash memory.

Error Processing

- None

7.36 (V2) FW Version Read (SAM FW)

(1) Command

IDN (1byte)	CMD (2bytes)	
"C"	"V"	"2"

(2) Positive Response

JDG (1byte)	RCM (2bytes)		RES (2bytes)	RDT (20bytes)		
"P"	"V"	"2"	"xx"	<1>	<2>	<3>

RDT	Length (Bytes)	Data (ASCII)	Meaning
<1>	12	"AAAAAAAAAAAA"	FW type in Memory
<2>	2	"AA"	FW Version in Memory
<3>	6	"000000"~"FFFFFF"	SUM Value in Memory

(3) Negative Response

JDG (1byte)	RCM (2bytes)		RES (2bytes)
"N"	"V"	"2"	"xx"

(4) Detailed Functions

Normal Processing

- The C/R reads the SAM FW information (Type, Version and Sum value) in the flash memory.

Error Processing

- None

7.37 (Y0) ICC Control Information Read

(1) Command

IDN (1byte)	CMD (2bytes)	
"C"	"Y"	"0"

(2) Positive Response

JDG (1byte)	RCM (2bytes)		RES (2bytes)	RDT (16bytes)						
"P"	"Y"	"0"	"xx"	<1>	<2>	<3>	<4>	<5>	<6>	<7>

RDT	Length (Bytes)	Data (ASCII)	Meaning	
<1>	2	"?"	Not selected (*3)	Transmission control standard for ICC (Setting value by "Y6" command)
		"00"	ISO 7816-3 (*1) (*2)	
		"05"	EMV / GIE-CB	
		"06"	ZKA	
<2>	2	"06" - "99" ("10")	Seconds (Default value when shipping =10sec)	Monitoring time of receiving ICC and SAM command (Setting value by "Y5" command)
<3>	1	"0"	Automatic IFSD Request (*1)	Automatic IFSD request at starting T=1protocol for ICC and SAM (Setting value by "Y3" command)
		"1"	No IFSD Request	
<4>	1	"0"	TCK Check (Default)	Presence/absence of TCK inspection of ATR for ICC and SAM (Setting value by "Y4" command)
		"1"	No TCK Check	
<5>	1	"0"	From high voltage level (5V->3V) (*1)	Control method of VCC for ICC or SAM (Setting value by "Y5" command)
		"1"	From low voltage level (3V->5V)	
		"2"	5V only	
		"3"	3V only	
<6>	2	"?"	Not selected (*3)	Transmission control standard for SAM (Setting value by "Y7" command)
		"00"	ISO 7816-3 (*1) (*2)	
		"05"	EMV / GIE-CB	
		"06"	ZKA	
<7>	7	"0"	Spare	

*1: Denotes the factory setting

*2: Denotes the setting value when turning on the power

*3: When the ICC firmware or the SAM firmware is downloaded, "?" is indicated.

(3) Negative Response

JDG (1byte)	RCM (2bytes)		RES (2bytes)
"N"	"Y"	"0"	"xx"

(4) Detailed Functions

Normal Processing

- The C/R reads the control information for handling the ICC or the SAM.

Error Processing

- None

7.38 (Y2) ICC Control Information (Timer value of Waiting for reception from ICC)

(1) Command

IDN (1byte)	CMD (2bytes)		CMP (2bytes)
"C"	"Y"	"2"	<1>

CMP	Length (Bytes)	Data (ASCII)	Meaning
1	2	"00 "	420 sec >S (WTX req), INF=255, BWT=4)
		"06" - "99"	Seconds (Default ="10"(10sec))

(2) Positive Response

JDG (1byte)	RCM (2bytes)		RES (2bytes)
"P"	"Y"	"2"	"xx"

(3) Negative Response

JDG (1byte)	RCM (2bytes)		RES (2bytes)
"N"	"Y"	"2"	"xx"

(4) Detailed Functions

Normal Processing

- The C/R sets the monitoring time for waiting for the reception from ICC or the SAM.

Error Processing

- When this command is received during ICC activation, the C/R sends a **"Sequence Error"("N01")**.

7.39 (Y3) ICC Control Information (IFSD Control Method)

(1) Command

IDN (1byte)	CMD (2bytes)		CMP (1byte)
"C"	"Y"	"3"	<1>

CMP	Length (Byte)	Data (ASCII)	Meaning
<1>	1	"0"	Automatic IFSD Request (Default)
		"1"	No IFSD Request

(2) Positive Response

JDG (1byte)	RCM (2bytes)		RES (2bytes)
"P"	"Y"	"3"	"xx"

(3) Negative Response

JDG (1byte)	RCM (2bytes)		RES (2bytes)
"N"	"Y"	"3"	"xx"

(4) Detailed Functions

Normal Processing

- The C/R sets the IFSD control method when it sends the data to the ICC or the SAM using T=1 protocol.

Error Processing

- When this command is received during ICC activation, the C/R sends a **"Sequence Error"("N01")**.

7.40 (Y4) ICC Control Information (TCK Control Method)

(1) Command

IDN (1byte)	CMD (2bytes)		CMP (1byte)
"C"	"Y"	"4"	<1>

CMP	Length (Byte)	Data (ASCII)	Meaning
<1>	1	"0"	TCK Checks (Default)
		"1"	No TCK Check

(2) Positive Response

JDG (1byte)	RCM (2bytes)		RES (2bytes)
"P"	"Y"	"4"	"xx"

(3) Negative Response

JDG (1byte)	RCM (2bytes)		RES (2bytes)
"N"	"Y"	"4"	"xx"

(4) Detailed Functions

Normal Processing

- The C/R sets the TCK control method when it activates ICC or the SAM.

Error Processing

- The C/R sends a **"Sequence Error"("N01")** when it receives this command during ICC activation.

7.41 (Y5) ICC Control Information Supply (Voltage Level Set)

(1) Command

IDN (1byte)	CMD (2bytes)		CMP (1byte)
"C"	"Y"	"5"	<1>

CMP	Length (Byte)	Data (ASCII)	Meaning
<1>	1	"0"	Activates the ICC from high voltage level. (5V -> 3V) (Default)
		"1"	Activates the ICC from low voltage level. (3V -> 5V)
		"2"	Activates the ICC with 5V only.
		"3"	Activates the ICC with 3V only.

(2) Positive Response

JDG (1byte)	RCM (2bytes)		RES (2bytes)
"P"	"Y"	"5"	"xx"

(3) Negative Response

JDG (1byte)	RCM (2bytes)		RES (2bytes)
"N"	"Y"	"5"	"xx"

(4) Detailed Functions

Normal Processing

- The C/R sets the ICC supply voltage during activation.

Error Processing

- The C/R sends a "**Sequence Error**"("N01") when it receives this command during ICC activation.

(5) Notes

- This command is effective only when ICC mode is ISO7816-3 (mode0). In the other standards, only 5V enables activation.

7.42 (Y6) ICC Control Information (ICC Mode Setting)

(1) Command

IDN (1byte)	CMD (2bytes)		CMP (2bytes)
"C"	"Y"	"6"	<1>

(2) Positive Response

JDG (1byte)	RCM (2bytes)		RES (2bytes)
"P"	"Y"	"6"	"xx"

CMP	Length (Bytes)	Data (ASCII)	Meaning
<1>	2	"00"	ISO7816
		"05"	EMV / GIE-CB
		"06"	ZKA

(3) Negative Response

JDG (1byte)	RCM (2bytes)		RES (2bytes)
"N"	"Y"	"6"	"xx"

(4) Detailed Functions

Normal Processing

- The C/R sets ICC control mode for handling ICC.

Error Processing

- The C/R sends a "**Sequence Error**"("N01") when it receives this command during ICC activation.
- The C/R sends a "**Sequence Error**"("N01") when the FW of mode specified by a command parameter has not been downloaded yet.

(5) Notes

- Set "00" as default value after the shipment.
- Reset "00" as the default value after power on.

7.43 (Y7) ICC Control Information (SAM Mode Setting)

(1) Command

IDN (1byte)	CMD (2bytes)		CMP (2bytes)
"C"	"Y"	"7"	<1>

(2) Positive Response

JDG (1byte)	RCM (2bytes)		RES (2bytes)
"P"	"Y"	"7"	"xx"

CMP	Length (Bytes)	Data (ASCII)	Meaning
<1>	2	"00"	ISO7816
		"05"	EMV / GIE-CB
		"06"	ZKA

(3) Negative Response

JDG (1byte)	RCM (2bytes)		RES (2bytes)
"N"	"Y"	"7"	"xx"

(4) Detailed Functions

Normal Processing

- The C/R sets ICC control mode for handling SAM.

Error Processing

- The C/R sends a "**Sequence Error**" ("**N01**") when it receives this command during SAM activation.
- It sends a "**Sequence Error**" ("**N01**") when the FW of mode specified by a command parameter has not been downloaded yet.

(5) Notes

- Set "00" as default value after the shipment.
- Reset "00" as the default value after power on.

7.44 (d0) DL Start

(1) Command

IDN (1byte)	CMD (2bytes)		CMP (30~230bytes)				
"C"	"d"	"0"	<1>	<2>	<3>	<4>	<5>

CMP	Length (Byte)		Data (ASCII)	Meaning	
<1>	4		"2054"	One Block Size of Download Firmware	
<2>	4		"0001"~"9999"	Total Block Number of Download Firmware	
<3>	20		Variable	Download Identification Information	
<4>	2		"00"~"10"	Downloadable CPU Number (N)	
<5>	N X 10 (0~200)	12	Variable	CPU Type	Information for CPU No.1
		2	Variable	CPU Version	
		6	Variable	CPU SUM Value	
		12	Variable	CPU Type	Information for CPU No.2
		2	Variable	CPU Version	
		6	Variable	CPU SUM Value	
		:	:	:	Information for CPU No.N
		12	Variable	CPU Type	
		2	Variable	CPU Version	
		6	Variable	CPU SUM Value	

(2) Positive Response

JDG (1byte)	RCM (2bytes)		RES (2bytes)
"P"	"d"	"0"	"xx"

(3) Negative Response

JDG (1byte)	RCM (2bytes)		RES (2bytes)
"N"	"d"	"0"	"xx"

(4) Detailed Functions

Normal Processing

- The C/R confirms if the firmware is downloadable.
- It determines the method for download (Standard FW Download or Partial FW Download).
- It deletes the data in the area that is necessary for downloading flash memory.

Error Processing

- None

7.45 (d1) DL Transmission

(1) Command

IDN (1byte)	CMD (2bytes)	CMP (2054bytes)
"C"	"d" "1"	

CMP	Length (Byte)	Data (BIN)	Meaning
<1>	2	0000H~FFFFH	Block Number of Download Firmware
<2>	4	Variable	Start Address of Download Firmware
<3>	2044	Variable	Data of Download Firmware
<4>	4	Variable	SUM Value of Data

(2) Positive Response

JDG (1byte)	RCM (2bytes)	RES (2bytes)
"P"	"d" "1"	"xx"

(3) Negative Response

JDG (1byte)	RCM (2bytes)	RES (2bytes)
"N"	"d" "1"	"xx"

(4) Detailed Functions

Normal Processing

- The C/R stores the download firmware data into flash memory.

Error Processing

- None

7.46 (d2) DL Completion

(1) Command

IDN (1byte)	CMD (2bytes)	
"C"	"d"	"2"

(2) Positive Response

JDG (1byte)	RCM (2bytes)		RES (2bytes)	RDT (20 or 22bytes)		
"P"	"d"	"2"	"xx"	<1>	<2>	<3>

RDT	Length (Bytes)	Data (ASCII)	Meaning
<1>	12	"AAAAAAAAAAAA"	FW type in Flash Memory
<2>	2	"AA"	FW Version in Flash Memory
<3>	6	"000000"~"FFFFFF"	SUM Value in Subset FW
	8	"00000000"~"FFFFFFFF"	SUM Value in Total FW

(3) Negative Response

JDG (1byte)	RCM (2bytes)		RES (2bytes)
"N"	"d"	"2"	"xx"

(4) Detailed Functions

Normal Processing

- The C/R completes writing to the flash memory and confirms whether the writing was normal. It sends a **"DL Completion Response" ("31")**.

Error Processing

- None

7.47 (d3) DL Preparation

(1) Command

IDN (1byte)	CMD (2bytes)		CMP (22bytes)		
"C"	"d"	"3"	<1>	<2>	... <3>

CMP	Length (Bytes)	Data (ASCII)	Meaning
1	12	"AAAAAAAAAAAA"	FW type in Flash Memory
2	2	"AA"	FW Version in Flash Memory
3	8	"00000000" ~ "FFFFFFF"	FW SUM Value in Flash Memory

(2) Positive Response

JDG (1byte)	RCM (2bytes)		RES (2bytes)
"P"	"d"	"3"	"xx"

(3) Negative Response

JDG (1byte)	RCM (2bytes)		RES (2bytes)
"N"	"d"	"3"	"xx"

(4) Detailed Functions

Normal Processing

- The C/R copies the program relating DL into RAM.
- It becomes downloadable and waits for the **"DL Start Command"("d0")**.

Error Processing

- None

(5) Notes

- The program in RAM runs until DL completion.
- The host should send a **"DL Start Command"("d0")** if it receives a normal response to the **"DL Preparation"("d3")**.

7.48 (e0) SAM Status Sense

(1) Command

IDN (1byte)	CMD (2bytes)		CMP (1byte)
"C"	"e"	"0"	<1>

CMP	Length (Byte)	Data (BIN)	Meaning
<1>	1	"1"	SAM Number (Fixed)

(2) Positive Response

JDG (1byte)	RCM (2bytes)		RES (2bytes)	SAM RES (2bytes)
"P"	"e"	"0"	"xx"	"xx"

(3) Negative Response

JDG (1byte)	RCM (2bytes)		RES (2bytes)
"N"	"e"	"0"	"xx"

(4) Detailed Functions

Normal Processing

- The C/R reads the SAM status.

Error Processing

- None

7.49 (e1) SAM Activation

(1) Command

IDN (1byte)	CMD (2bytes)		CMP (1 or 3bytes)		
"C"	"e"	"1"	<1>	<2>	<3>

CMP	Length (Bytes)	Data (ASCII)		Meaning
		Value	Default Value	
<1>	1	"1"	--	SAM Number
<2>	0~1	"0" ~ "7"	"0"	NAD (Node Address) of SAM
<3>	0~1	"0" ~ "7"	"0"	NAD of C/R

For details, see ISO/IEC 7816-3.

(2) Positive Response

JDG (1byte)	RCM (2bytes)		RES (2bytes)	SAM RES (2bytes)		RDT (2~33bytes)				
"P"	"e"	"1"	"xx"	"4"	"1"	<1>	<2>	~	<4>	<5>

RDT	Length (Bytes)	Data (BIN)		Meaning	
<1>	1	00H-FFH		TS	Initial Character
<2>	1	00H-FFH		T0	Format Character
<3>	0~31	Undefined	00H-FFH	TA1~TDn	Interface Character
<4>		0~15	00H-FFH	T1~Tk	Historical Characters
<5>		0~1	00H-FFH	TCK	Check Character

For details, see ISO/IEC 7816-3.

(3) Negative Response

JDG (1byte)	RCM (2bytes)		RES (2bytes)
"N"	"e"	"1"	"xx"

JDG (1byte)	RCM (2bytes)		RES (2bytes)	RDT (2~33bytes)						
"N"	"e"	"1"	"A"	"7"	<2>	<3>	<4>	5>	<6>	

*1: Only for the **"Unsupported ATR Error"("A7")**, the C/R sends the error with the ATR information as a response. (For details, see below)

RDT	Length (Bytes)	Data (BIN)		Meaning	
<2>	1	00H-FFH		TS	Initial Character
<3>	1	00H-FFH		T0	Format Character
<4>	0~31	Undefined	00H-FFH	TA1~TDn	Interface Character
<5>		0~15	00H-FFH	T1~Tk	Historical Characters
<6>		0~1	00H-FFH	TCK	Check Character

(4) Detailed Functions

Normal Processing

- The C/R activates the SAM (Cold Reset).
- It sends an ATR received from the card.
- It specifies the NAD value that is used for T=1 protocol (only when specified by the command parameter).

Error Processing

- When any ATR unsupported by the C/R is received after the ICC activation, the C/R sends an ATR with an **"ATR Error" ("NA7")**.

7.50 (e2) SAM Deactivation

(1) Command

IDN (1byte)	CMD (2bytes)		CMP (1byte)
"C"	"e"	"2"	<1>

CMP	Length (Byte)	Data (BIN)	Meaning
<1>	1	"1"	SAM Number (Fixed)

(2) Positive Response

JDG (1byte)	RCM (2bytes)		RES (2bytes)	SAM RES (2bytes)	
"P"	"e"	"2"	"xx"	"4"	"0"

(3) Negative Response

JDG (1byte)	RCM (2bytes)		RES (2bytes)
"N"	"e"	"2"	"xx"

(4) Detailed Functions

Normal Processing

- The C/R deactivates the SAM.

Error Processing

- None

7.51 (e3) SAM Cold Reset

(1) Command

IDN (1byte)	CMD (2bytes)		CMP (2 or 4bytes)			
"C"	"e"	"3"	<1>	<2>	<3>	<4>

CMP	Length (Bytes)	Data (ASCII)		Meaning
		Value	Default Value	
<1>	1	"1"	--	SAM Number
<2>	1	"0"	--	C/R executes PPS automatically after receiving ATR.
		"1"	--	C/R doesn't execute PPS automatically after receiving ATR.
<3>	0~1	"0"~"7"	"0"	NAD (Node Address) of SAM
<4>	0~1	"0"~"7"	"0"	NAD of C/R

For details, see ISO/IEC 7816-3.

(2) Positive Response

JDG (1byte)	RCM (2bytes)		RES (2bytes)	SAM RES (2bytes)		RDT (3~34bytes)				
"P"	"e"	"3"	"xx"	"4"	"1"	<1>	<2>	~	<5>	<6>

RDT	Length (Bytes)	Data (BIN)		Meaning	
<1>	1	"0"		Enables to execute protocol type T=0 immediately	
		"1"		Enables to execute protocol type T=1 immediately	
		"P"		Needs to select protocol type by PPS Request Commands	
		"N"		Incompletion of PPS Execution	
		"?"		Command Parameter is " No PPS Execution automatically	
<2>	1	00H-FFH		TS	Initial Character
<3>	1	00H-FFH		T0	Format Character
<4>	0~31	Undefined	00H-FFH	TA1~TDn	Interface Character
<5>		0~15	00H-FFH	T1~Tk	Historical Characters
<6>		0~1	00H-FFH	TCK	Check Character

For details, see ISO/IEC 7816-3.

(3) Negative Response

JDG (1byte)	RCM (2bytes)		RES (2bytes)
"N"	"e"	"3"	"xx"

JDG (1byte)	RCM (2bytes)		RES (2bytes)	RDT (2~33bytes)					
"N"	"e"	"3"	"A"	"7"	<2>	<3>	<4>	5>	<6>

*1: Only for the **"Unsupported ATR Error"("A7")**, the C/R sends the error with the ATR information as a response. (For details, see below)

RDT	Length (Bytes)	Data (BIN)	Meaning	
<2>	1	00H-FFH	TS	Initial Character
<3>	1	00H-FFH	T0	Format Character
<4>	0~31	Undefined	TA1~TDn	Interface Character
<5>		0~15	T1~Tk	Historical Characters
<6>		0~1	TCK	Check Character

(4) Detailed Functions**Normal Processing**

- The C/R activates the SAM (Cold Reset).
- It sends an ATR received from the SAM.
- If possible, it executes the PPS request (only when specified by the command parameter).
- It specifies the NAD value that is used for T=1 protocol (only when specified by the command parameter).

Error Processing

- When any ATR unsupported by the C/R is received after the ICC activation, the C/R sends an ATR with an **"ATR Error" ("NA7")**.

7.52 (e4) SAM Warm Reset

(1) Command

IDN (1byte)	CMD (2bytes)		CMP (2 or 4bytes)			
"C"	"e"	"4"	<1>	<2>	<3>	<4>

CMP	Length (Bytes)	Data (ASCII)		Meaning
		Value	Default Value	
<1>	1	"1"	--	SAM Number
<2>	1	"0"	--	C/R executes PPS automatically after receiving ATR.
		"1"	--	C/R doesn't execute PPS automatically after receiving ATR.
<3>	0~1	"0"~"7"	"0"	NAD (Node Address) of the SAM
<4>	0~1	"0"~"7"	"0"	NAD of C/R

For details, see ISO/IEC 7816-3.

(2) Positive Response

JDG (1byte)	RCM (2bytes)		RES (2bytes)	SAM RES (2bytes)		RDT (3~34bytes)				
"P"	"e"	"4"	"xx"	"4"	"1"	<1>	<2>	~	<5>	<6>

RDT	Length (Bytes)	Data (BIN)		Meaning	
<1>	1	"0"		Enables to execute protocol type T=0 immediately.	
		"1"		Enables to execute protocol type T=1 immediately.	
		"P"		Needs to select protocol type by PPS Request Commands.	
		"N"		Incompletion of PPS Execution	
		"?"		Command Parameter is " No PPS Execution automatically.	
<2>	1	00H-FFH		TS	Initial Character
<3>	1	00H-FFH		T0	Format Character
<4>	0~31	Undefined	00H-FFH	TA1~TDn	Interface Character
<5>		0~15	00H-FFH	T1~Tk	Historical Characters
<6>		0~1	00H-FFH	TCK	Check Character

For details, see ISO/IEC 7816-3.

(3) Negative Response

JDG (1byte)	RCM (2bytes)		RES (2bytes)
"N"	"e"	"4"	"xx"

JDG (1byte)	RCM (2bytes)		RES (2bytes)	RDT (2~33bytes)					
"N"	"e"	"4"	"A"	"7"	<2>	<3>	<4>	5>	<6>

*1: Only for the **"Unsupported ATR Error"("A7")**, the C/R sends the error with the ATR information as a response. (For details, see below)

RDT	Length (Bytes)	Data (BIN)	Meaning	
<2>	1	00H-FFH	TS	Initial Character
<3>	1	00H-FFH	T0	Format Character
<4>	0~31	Undefined	TA1~TDn	Interface Character
<5>		0~15	T1~Tk	Historical Characters
<6>		0~1	TCK	Check Character

(4) Detailed Functions**Normal Processing**

- The C/R activates the SAM (Warm Reset).
- The C/R sends an ATR received from the SAM.
- If possible, the C/R executes the PPS request (only when it is specified by the command parameter).
- The C/R sets the NAD value that is used by the T=1 protocol (only when it is specified by the command parameter).

Error Processing

- When any ATR unsupported by the C/R is received after the ICC activation, the C/R sends an ATR with an **"ATR Error" ("N87")**.

7.53 (f0) SAM T=0 Transmission

(1) Command

IDN (1byte)	CMD (2bytes)		CMP (5~262bytes)							
"C"	"f"	"0"	<1>	<2>	<3>	<4>	<5>	<6>	<7>	<8>

CMP	Length (Bytes)	Data (BIN)	Meaning	
<1>	1	"1"	SAM Number (Fixed)	
<2>	1	00H~FEH	CLA	Instruction Class
<3>	1	00H~FFH	INS	Instruction Code
<4>	1	00H~FFH	P1	Instruction Parameter 1
<5>	1	00H~FFH	P2	Instruction Parameter 2
<6>	0 or 1	01H~FFH	Lc field	Number of Byte present in Command Data Field
<7>	Variable = Lc (0~255)	00H~FFH	Data field	String Byte sent in Command Data Field
<8>	0 or 1	00H~FFH	Le field	Maximum Number of Byte expected in Data Field of Response to Command

For details, see ISO/ICE 7816-4. However, the Case 1 to Case 4 in the table below are enabled.

ISO/IEC 7816-4: Annex A Transportation of APDUs by T=0				Remarks
A.1	Case 1			Enable
A.2	Case 2 short	Case 2S.1	Accepted Le	Enable
		Case 2S.2	Definitely not accepted Le	Enable
		Case 2S.3	Not accepted Le, specified La	*1
A.3	Case 3 short			Enable
A.4	Case 4 short	Case 4S.1	Not accepted Command	*1
		Case 4S.2	Accepted Command	*1
		Case 4S.3	Accepted Command with Information Added	*1
A.5	Case 2 Extended			Disable
A.6	Case 3 Extended			Disable
A.7	Case 4 Extended			Disable

*1: It is enabled to use only when ICC reference standard is "EMV3.1.1", "CB" or "ZKA".

(2) Positive Response

JDG (1byte)	RCM (2bytes)		RES (2bytes)	SAM RES (2bytes)		RDT (2~258bytes)		
"P"	"f"	"0"	"xx"	"5"	"0"	<1>	<2>	<3>

RDT	Length (Bytes)	Data (ASCII)	Meaning	
<1>	0~256	ICC Data	INF	ICC Data (Information Field)
<2>	1	ICC Data	SW1	Status-1
<3>	1	ICC Data	SW2	Status-2

For details, see ISO/IEC 7816-4.

(3) Negative Response

JDG (1byte)	RCM (2bytes)		RES (2bytes)
"N"	"f"	"0"	"xx"

(4) Detailed Functions**Normal Processing**

- The C/R sends or receives the data between the host and the SAM using T=0 protocol.

Error Processing

- None

(5) Notes

- For Case 1, the host has to send the data to the C/R without Lc=00. The C/R sends the command parameter with Lc=00 to the SAM. For details, see ISO7816-4 Annex A.
- When a **Cancel Request("E")** is received during a command execution, the command processing is aborted **with the SAM remained activated.**

7.54 (f1) SAM T=1 Transmission

(1) Command

(1-1) When Normal Transmission

IDN (1byte)	CMD (2bytes)		CMP (5~361bytes)							
"C"	"f"	"1"	<1>	<2>	<3>	<4>	<5>	<6>	<7>	<8>

CMP	Length (Bytes)	Data (BIN)	Meaning	
<1>	1	"1"	SAM Number (Fixed)	
<2>	1	00H~FEH	CLA	Instruction Class
<3>	1	00H~FFH	INS	Instruction Code
<4>	1	00H~FFH	P1	Instruction Parameter 1
<5>	1	00H~FFH	P2	Instruction Parameter 2
<6>	0, 1 or 3	01H~FFH	Lc field	Number of Byte present in Command Data Field
<7>	Variable = Lc (0~353)	00H~FFH	Data field	String Byte sent in Command Data Field
<8>	0, 1 or 3	00H~FFH	Le field	Maximum Number of Byte expected in Data Field of Response to Command

For details, see ISO/ICE 7816-4.

(1-2) The last block when continuous transmission

IDN (1byte)	CMD (2bytes)		CMP (1~361bytes)							
"C"	"f"	"1"	<1>	<7>						

CMP	Length	Data (BIN)	Meaning	
<1>	1	"1"	SAM Number (Fixed)	
<7>	0~360	00H~FFH	Data field	String Byte sent in Command Data Field

For details, see ISO/ICE 7816-4.

(2) Positive Response**(2-1) Transmission Completion(RES="20")**

JDG (1byte)	RCM (2bytes)		RES (2bytes)	SAM RES (2bytes)		RDT (2~320)		
"P"	"f"	"1"	"xx"	"5"	"0"	<1>	<2>	<3>

RDT	Length (Bytes)	Data (ASCII)	Meaning	
<1>	0~318	ICC Data	INF	SAM Data (Information Field)
<2>	1	ICC Data	SW1	Status-1
<3>	1	ICC Data	SW2	Status-2

For details, see ISO/IEC 7816-4.

(2-2) Continuous Reception State(RES="21")

JDG (1byte)	RCM (2bytes)		RES (2bytes)	SAM RES (2bytes)		RDT (0~320bytes)	
"P"	"f"	"1"	"xx"	"5"	"1"	<1>	<2>

RDT	Length (Bytes)	Data (ASCII)	Meaning	
<1>	0~320	ICC Data	INF	SAM Data (Information Field)
<2>	0 ~1	ICC Data	SW1	Status-1

For details, see ISO/IEC 7816-4.

(3) Negative Response

JDG (1byte)	RCM (2bytes)		RES (2bytes)
"N"	"f"	"1"	"xx"

(4) Detailed Functions**Normal Processing**

- The C/R sends or receives the data between the host and the SAM using T=1 protocol.

Error Processing

- None

(5) Notes

- When a **Cancel Request("E")** is received during a command execution, the command processing is aborted **with the SAM remained activated**.

7.55 (f2) SAM T=1 Continuous Transmission

(1) Command

The first block when continuous transmission

IDN (1byte)	CMD (2bytes)		CMP (5~361bytes)							
"C"	"f"	"2"	<1>	<2>	<3>	<4>	<5>	<6>	<7>	<8>

CMP	Length (Bytes)	Data (BIN)	Meaning	
<1>	1	"1"	SAM Number (Fixed)	
<2>	1	00H~FEH	CLA	Instruction Class
<3>	1	00H~FFH	INS	Instruction Code
<4>	1	00H~FFH	P1	Instruction Parameter 1
<5>	1	00H~FFH	P2	Instruction Parameter 2
<6>	0, 1 or 3	01H~FFH	Lc field	Number of Byte present in Command Data Field
<7>	Variable = Lc (0~353)	00H~FFH	Data field	String Byte sent in Command Data Field
<8>	0, 1 or 3	00H~FFH	Le field	Maximum Number of Byte expected in Data Field of Response to Command

For details, see ISO/ICE 7816-4.

Block except the top and last when continuous transmission

IDN (1byte)	CMD (2bytes)		CMP (1~361bytes)							
"C"	"f"	"2"	<6>							

CMP	Length (Bytes)	Data (BIN)	Meaning	
<1>	1	"1"	SAM Number (Fixed)	
<7>	0~360	00H~FFH	Data field	String Byte sent in Command Data Field

For details, see ISO/ICE 7816-4.

(2) Positive Response

JDG (1byte)	RCM (2bytes)		RES (2bytes)	SAM RES (2bytes)	
"P"	"f"	"2"	"xx"	"5"	"2"

(3) Negative Response

JDG (1byte)	RCM (2bytes)		RES (2bytes)
"N"	"f"	"2"	"xx"

(4) Detailed Functions

Normal Processing

- The C/R sends the chained data of T=1 protocol.

Error Processing

- None

(5) Notes

- When a **Cancel Request("E")** is received during a command execution, the command processing is aborted **with the SAM remained activated**.

7.56 (f3) SAM T=1 Continuous Reception

(1) Command

IDN (1byte)	CMD (2bytes)		CMP (1byte)
"C"	"f"	"3"	<1>

CMP	Length (Byte)	Data (BIN)	Meaning
<1>	1	"1"	SAM Number (Fixed)

(2) Positive Response

Transmission Completion (RES="50")

JDG (1byte)	RCM (2bytes)		RES (2bytes)	SAM RES (2bytes)		RDT (1~320bytes)		
"P"	"f"	"3"	"xx"	"5"	"0"	<1>	<2>	<3>

RDT	Length (Bytes)	Data (ASCII)	Meaning	
<1>	0~318	ICC Data	INF	ICC Data (Information Field)
<2>	0~1	ICC Data	SW1	Status-1
<3>	1	ICC Data	SW2	Status-2

For details, see ISO/IEC 7816-4.

Continuous Reception State (RES="51")

JDG (1byte)	RCM (2bytes)		RES (2bytes)	SAM RES (2bytes)		RDT (320bytes)	
"P"	"f"	"3"	"xx"	"5"	"1"	<1>	<2>

RDT	Length (Bytes)	Data (ASCII)	Meaning	
<1>	319~320	SAM Data	INF	ICC Data (Information Field)
<2>	0~1	SAM Data	SW1	Status-1

For details, see ISO/IEC 7816-4.

(3) Negative Response

JDG (1byte)	RCM (2bytes)		RES (2bytes)
"N"	"f"	"3"	"xx"

(4) Detailed Functions

Normal Processing

- The C/R receives chained data of T=1 protocol.

Error Processing

- None

(5) Notes

- When a **Cancel Request ("E")** is received during a command execution, the command processing is aborted **with the SAM remained activated**.

7.57 (f4) SAM T=1 Interruption Completion

(1) Command

IDN (1byte)	CMD (2bytes)		CMP (1byte)
"C"	"f"	"4"	<1>

CMP	Length (Byte)	Data (BIN)	Meaning
<1>	1	"1"	SAM Number (Fixed)

(2) Positive Response

JDG (1byte)	RCM (2bytes)		RES (2bytes)		
"P"	"f"	"4"	"xx"	"2"	"3"

(3) Negative Response

JDG (1byte)	RCM (2bytes)		RES (2bytes)
"N"	"f"	"4"	"xx"

(4) Detailed Functions

Normal Processing

- The C/R forcedly terminates the transmission or the receipt of the data in T=1 protocol type.

Error Processing

- None

(5) Notes

- When a **Cancel Request ("E")** is received during a command execution, the command processing is aborted **with the SAM remained activated.**

7.58 (f8) SAM PPS Request

(1) Command

IDN (1byte)	CMD (2bytes)		CMP (1~2byte)	
"C"	"f"	"8"	<1>	<2>

CMP	Length (Bytes)	Data (ASCII)	Meaning
<1>	1	"1"	SAM Number (Fixed)
<2>	0 or 1	"0"	Selection of protocol type T=0
		"1"	Selection of protocol type T=1

(2) Positive Response

JDG (1byte)	RCM (2bytes)		RES (2bytes)	SAM RES (2bytes)		RDT (1byte)
"P"	"f"	"8"	"xx"	"5"	"0"	<1>

RDT	Length (Bytes)	Data (ASCII)	Meaning
<1>	1	"0"	Enable to execute T=0
		"1"	Enable to execute T=1
		"N"	Incompletion PPS Execution

(3) Negative Response

JDG (1byte)	RCM (2bytes)		RES (2bytes)
"N"	"f"	"8"	"xx"

(4) Detailed Functions

Normal Processing

- The C/R executes a PPS request between the host and the SAM in order to change "F and D" or "Protocol type".

Error Processing

- None

7.59 (fC) SAM T=0 / T=1 Transmission

(1) Command

IDN (1byte)	CMD (2bytes)		CMP (5~262bytes)							
"C"	"f"	"C"	<1>	<2>	<3>	<4>	<5>	<6>	<7>	<8>

CMP	Length (Bytes)	Data (BIN)	Meaning	
<1>	1	"1"	SAM Number (Fixed)	
<2>	1	00H~FEH	CLA	Instruction Class
<3>	1	00H~FFH	INS	Instruction Code
<4>	1	00H~FFH	P1	Instruction Parameter 1
<5>	1	00H~FFH	P2	Instruction Parameter 2
<6>	0 or 1	01H~FFH	Lc field	Number of Byte present in Command Data Field
<7>	Variable = Lc (0~255)	00H~FFH	Data field	String Byte sent in Command Data Field
<8>	0 or 1	00H~FFH	Le field	Maximum Number of Byte expected in Data Field of Response to Command

For details, see ISO/IEC 7816-4. However, the Case 1 to Case 4 in the table below are enabled.

ISO/IEC 7816-4: Annex A Transportation of APDUs by T=0				Remarks
A.1	Case 1			Enable
A.2	Case 2 short	Case 2S.1	Accepted Le	Enable
		Case 2S.2	Definitely not accepted Le	Enable
		Case 2S.3	Not accepted Le, specified La	*1
A.3	Case 3 short			Enable
A.4	Case 4 short	Case 4S.1	Not accepted Command	*1
		Case 4S.2	Accepted Command	*1
		Case 4S.3	Accepted Command with Information Added	*1
A.5	Case 2 Extended			Disable
A.6	Case 3 Extended			Disable
A.7	Case 4 Extended			Disable

*1: It is enabled to use only when ICC reference standard is "EMV3.1.1", "CB" or "ZKA".

(2) Positive Response

JDG (1byte)	RCM (2bytes)		RES (2bytes)	SAM RES (2bytes)		RDT (2~258bytes)		
"P"	"f"	"C"	"xx"	"5"	"0"	<1>	<2>	<3>

RDT	Length (Bytes)	Data (ASCII)	Meaning	
<1>	0~256	SAM Data	INF	SAM Data (Information Field)
<2>	1	SAM Data	SW1	Status-1
<3>	1	SAM Data	SW2	Status-2

For details, see ISO/IEC 7816-4.

(3) Negative Response

JDG (1byte)	RCM (2bytes)		RES (2bytes)
"N"	"f"	"C"	"xx"

(4) Detailed Functions**Normal Processing**

- The C/R sends/receives the data with the SAM by the protocol type that is analyzed by the C/R, either T=0 or T=1 protocol.

Error Processing

- None

(5) Notes

- When a **Cancel Request (“E”)** is received during a command execution, the command processing is aborted **with the SAM remained activated.**

7.60 (m2) Memory Card Activation

(1) Command

IDN (1byte)	CMD (2bytes)		CMP (1byte)
"C"	"m"	"2"	<1>

CMP	Length (Byte)	Data (ASCII)	Meaning
<1>	1	"0"	SLE 4442
		"1"	SLE 4432
		"2"	SLE 4428
		"3"	SLE 4418

(2) Positive Response

JDG (1byte)	RCM (2bytes)		RES (2bytes)	RDT (4bytes)
"P"	"m"	"2"	"xx"	<1>

RDT	Length (Bytes)	Data (HEX)	Meaning
<1>	1	00H-FFH	Data 1
<2>	1	00H-FFH	Data 2
<3>	1	00H-FFH	Data 3
<4>	1	00H-FFH	Data 4

(3) Negative Response

JDG (1byte)	RCM (2bytes)		RES (2bytes)
"N"	"m"	"2"	"xx"

(4) Detailed Functions

Normal Processing

- The C/R activates a memory card.
- It sends an ATR received from the card (4bytes).

Error Processing

- When all the data in ATR are 00h or FFh, the C/R deactivates a memory card and sends an **Activation Error ("N82")**.

7.61 (m3) Memory Card Deactivation

(1) Command

IDN (1byte)	CMD (2bytes)	
"C"	"m"	"3"

(2) Positive Response

JDG (1byte)	RCM (2bytes)		RES (2bytes)
"P"	"m"	"3"	"xx"

(3) Negative Response

JDG (1byte)	RCM (2bytes)		RES (2bytes)
"N"	"m"	"3"	"xx"

(4) Detailed Functions

Normal Processing

- The C/R deactivates a memory card.

Error Processing

- None

7.62 (m5) Lock + memory card activation

(1) Command

IDN (1byte)	CMD (2bytes)		CMP (1byte)
"C"	"m"	"5"	<1>

CMP	Length (Byte)	Data (ASCII)	Meaning
<1>	1	"0"	SLE 4442
		"1"	SLE 4432
		"2"	SLE 4428
		"3"	SLE 4418

(2) Positive Response

JDG (1byte)	RCM (2bytes)		RES (2bytes)	RDT (4bytes)
"P"	"m"	"5"	"xx"	<1>

RDT	Length (Bytes)	Data (HEX)	Meaning
<1>	1	00H-FFH	Data 1
<2>	1	00H-FFH	Data 2
<3>	1	00H-FFH	Data 3
<4>	1	00H-FFH	Data 4

(3) Negative Response

JDG (1byte)	RCM (2bytes)		RES (2bytes)
"N"	"m"	"5"	"xx"

(4) Detailed Functions

Normal Processing

- The C/R locks and activates a memory card.
- It sends an ATR received from the card (4bytes).

Error Processing

- When the C/R has failed to lock the card, it sends a **"Lock Error" ("N11")**.
- When all the data in ATR are 00h or FFh, the C/R deactivates a memory card and sends an **Activation Error ("N82")**.

7.63 (m6) Memory card deactivation + Unlock

(1) Command

IDN (1byte)	CMD (2bytes)	
"C"	"m"	"6"

(2) Positive Response

JDG (1byte)	RCM (2bytes)		RES (2bytes)
"P"	"m"	"6"	"xx"

(3) Negative Response

JDG (1byte)	RCM (2bytes)		RES (2bytes)
"N"	"m"	"6"	"xx"

(4) Detailed Functions

Normal Processing

- The C/R deactivates a memory card.
- It unlocks the card.

Error Processing

- When the C/R has failed to unlock the card, it sends a **"Lock Error"("N11")**.

7.64 (m7) Memory Card Transmission

(1) Command

IDN (1byte)	CMD (2bytes)		CMP (5~260bytes)						
"C"	"m"	"7"	<1>	<2>	<3>	<4>	<5>	<6>	<7>

CMP	Length (Byte)	Data (ASCII)	Meaning		
<1>	1	00H~FFH	CLA	Class	Card Type
<2>	1	00H~FFH	INS	Instruction	Command Code
<3>	1	00H~FFH	P1	Parameter 1	Address (High)
<4>	1	00H~FFH	P2	Parameter 2	Address (Low)
<5>	0 or 1	00H~FFH	Lc field	Length	Number of Byte Present in Command Data Field
<6>	Variable = Lc	Variable	Data field	Data	String of Byte sent in Command Data Field
<7>	0 or 1	00H~FFH	Le field	Length	Maximum Number of Byte expected in Data Field of Response to Command

Command Parameter for SIEMENS SLE4442

The format of the command parameter for SIEMENS SLE4442 is shown below.

The card type for SIEMENS SLE4442 is "0"(30H). Therefore, CLA of every command is fixed to 30H.

Memory Card Command	CLA	INS	P1	P2	P3	DATA
Read Main Memory	30H	30H	00H	Start address (00H~FFH)	Read data length (00H~FFH) *1	Not provided
Update Main Memory *3	30H	38H	00H	Start address (00H~FFH)	Write data length (01H~FFH)	Write data
Read Protection Memory	30H	34H	FFH	FFH	04H *2	Not provided
Write Protection Memory	30H	3CH	00H	Start address (00H~1FH)	Write data length (01H~20H)	Write data *6
Read Security Memory	30H	31H	FFH	FFH	04H *2	Not provided
Update Security Memory *4	30H	39H	00H	Start address (00h) (01H~03H)	Write data length (01H) (01H~03H)	Write data
Compare Verification Data	30H	33H	00H	01H~03H	01hH03H	Compare data
PSC Verification *5	30H	FFH	00H	00H	03h	PSC Code (00H~FFH)

*1: When "00h" is specified for P2, the length of the read data is 256 bytes.

*2: Since the length of the read data is 4 bytes, the value of P3 is fixed to 04H.

*3: Even if the locked data has failed to be written, the C/R sends a positive response to the host.

*4: When P2 is 00h, P3 is fixed to 01h. When P2 is between 01H and 03H, P3 is also between 01H and 03H.

*5: The C/R automatically sends the seven commands required for PSC Verification.

*6: Write data is sent to a memory card along with the Write Protection Memory Command.

The memory card compares its storing memory with the write data in order to decide whether to protect the data or not.

Command Parameter for SIEMENS SLE4432

The format of command parameter for SIEMENS SLE4432 is shown below.

The card type for SIEMENS SLE4432 is "1"(31H). Therefore, CLA of every command is fixed to 31H.

Memory Card Command	CLA	INS	P1	P2	P3	DATA
Read Main Memory	31H	30H	00H	Start address (00H~FFH)	Read data length (00H~FFH) *1	Not provided
Update Main Memory *3	31H	38H	00H	Start address (00H~FFH)	Write data length (01H~FFH)	Write data
Read Protection Memory	31H	34H	FFH	FFH	04H *2	Not provided
Write Protection Memory	31H	3CH	00H	Start address (00H~FFH)	Write data length (01H~20H)	Write data

*1: When "00h" is specified for P2, the length of the read data is 256 bytes.

*2: Since the length of the read data is 4 bytes, P3 is fixed to 04H.

*3: Even if the locked data fails to be written, the C/R sends a positive response to the host.

Command Parameter for SIEMENS SLE4428

The format of command parameter for SIEMENS SLE4428 is shown below.

The card type for SIEMENS SLE4428 is "2"(32H). Therefore, CLA of every command is fixed to 32H.

Memory Card Command	CLA	INS	P1	P2	P3	DATA
Write and erase with Protect bit *2	32H	31H	Start address (0000H~03FFH)		Write data length (01H~FFH)	Write data
Write and erase without Protect bit *2	32H	33H	Start address (0000H~03FFH)		Write data length (01H~FFH)	Write data
Write protect bit with data Comparison (verification) *2	32H	30H	Start address (0000H~03FFH)		Write data length (01H~FFH)	Write data
Read 9 bits, data with Protect bit *3	32H	0CH	Start address (0000H~03FFH)		Read data length (00H~FFH) *1	Not provided
Read 8 bits, data without Protect bit	32H	0EH	Start address (0000H~03FFH)		Read data length (00H~FFH) *1	Not provided
Write error counter	32H	32H	Start address (03FDH)		01H	00H~FFH
Verify PCB byte(s)	32H	0DH	Start address (0000H~03FFH)		01H~02H	Compare data (00H~FFH)
PSC Verification *4	32H	FFH	0000H		02H	PSC Code (00H~FFH)

*1: When "00h" is specified for P2, the length of the read data is 256 bytes.

*2: Even if the locked data has failed to be written, the C/R sends a positive response to the host. The users shall take the responsibility of protection in the EC and PSC areas.

*3: When the data is sent from a memory card to the C/R, PB (protection bits) is added to 8-bit data. Therefore, the data sent from the C/R to the host is twice as much as the data sent from the card to C/R. However, the valid value is only the one in bit 0, and the values from bit 7 to bit 1 are fixed to 0.

*4: The C/R automatically sends the seven commands required for PSC Verification.

Command Parameter for SIEMENS SLE4418

The format of command parameter for SIEMENS SLE4418 is shown below.

The card type for SIEMENS SLE4418 is "3"(33H). Therefore, CLA of every command is fixed to 33H.

Memory Card Command	CLA	INS	P1	P2	P3	DATA
Write and erase with Protect bit *2	33H	31H	Start address (0000H~03FFH)		Write data length (01H~FFH)	Write data
Write and erase without Protect bit *2	33H	33H	Start address (0000H~03FFH)		Write data length (01H~FFH)	Write data
Write protect bit with data Comparison (verification) *2	33H	30H	Start address (0000H~03FFH)		Write data length (01H~FFH)	Write data
Read 9 bits, data with Protect bit *3	33H	0CH	Start address (0000H~03FFH)		Read data length (00H~FFH) *1	Not provided
Read 8 bits, data without Protect bit	33H	0EH	Start address (0000H~03FFH)		Read data length (00H~FFH) *1	Not provided

*1: When "00h" is specified for P2, the length of the read data is 256 bytes.

*2: Even if the locked data has failed to be written, the C/R sends a positive response to the host. The users shall take the responsibility of protection in the EC and PSC areas.

*3: When the data is sent from a memory card to the C/R, PB (protection bits) is added to 8-bit data. Therefore, the data sent from C/R to the host is twice as much as the data sent from the card to C/R. However, the valid value is only the one in bit 0, and the values from bit 7 to bit 1 are fixed to 0.

(2) Positive Response

JDG (1byte)	RCM (2bytes)		RES (2bytes)	RDT (0~512bytes)		
"P"	"m"	"7"	"xx"	<1>	<2>	<3>

RDT	Length (Byte)	Data (BIN)	Meaning
<1>	0~512	Variable	Reception Data from Memory Card

(3) Negative Response

JDG (1byte)	RCM (2bytes)		RES (2bytes)
"N"	"m"	"7"	"xx"

(4) Detailed Functions**Normal Processing**

- The C/R sends and receives the data between the host and the Memory Card.
- It checks the validity of commands but does not check the procedure of the sequence.

Error Processing

- When the parameters specified by the Memory Card Transmission Command ("m7") differ from the card type specified by the Memory Card Activation Command, the C/R sends a **"Sequence Error"("N01")**.

(5) Notes

- The command parameters and response data are the same as APDU.
- For the details of APDU, see ISO/IEC 7816-4.

7.65 (m8) Memory Card PSC Certification

(1) Command

IDN (1byte)	CMD (2bytes)		CMP (5~260bytes)						
"C"	"m"	"8"	<1>	<2>	<3>	<4>	<5>	<6>	<7>

CMP	Length (Byte)	Data (ASCII)	Meaning		
<1>	1	00H~FFH	CLA	Class	Card Type
<2>	1	00H~FFH	INS	Instruction	Command Code
<3>	1	00H~FFH	P1	Parameter 1	Address (High)
<4>	1	00H~FFH	P2	Parameter 2	Address (Low)
<5>	0 or 1	00H~FFH	Lc field	Length	Number of Byte present in Command Data Field
<6>	Variable = Lc	Variable	Data field	Data	String of Byte sent in Command Data Field
<7>	0 or 1	00H~FFH	Le field	Length	Maximum Number of Byte expected in Data Field of Response to Command

Command Parameter for each memory card

Memory Card Command	CLA	INS	P1	P2	P3	DATA
PSC Verification for SLE4448	30H	FFH	00H	00H	03H	PSC Code (000000H~FFFFFFH)
PSC Verification for SLE4428	32H	FFH	00H	00H	02H	PSC Code (0000H~FFFFH)

(2) Positive Response

JDG (1byte)	RCM (2bytes)		RES (2bytes)
"P"	"m"	"8"	"xx"

(3) Negative Response

JDG (1byte)	RCM (2bytes)		RES (2bytes)
"N"	"m"	"8"	"xx"

(4) Detailed Functions

Normal Processing

- Normal Processing: The C/R automatically sends a memory card the commands necessary for verification. (See "SIEMENS SLE4442 Data Book" or "SIEMENS SLE4428 Data Book".)
- Retry and Error Processing: If the PSC code specified by the command parameter is not correct, it fails PSC verification, then transmits a Disagreement of Verification code ("N89").
- When a memory card has failed to execute the PSC verification successively, and the EC of memory card that has protected the PSC verification is 00h, an Inappropriate Verification Code ("N8A") is returned as a response.
- When the host sends the Memory Card Verification Command ("m8") to a card not supporting the PSC verification, the C/R sends a "**Sequence Error**" ("**N01**").

Error Processing

- None

7.66 (u0) USER Information Read

(1) Command

IDN (1byte)	CMD (2bytes)		CMP (3bytes)
"C"	"u"	"0"	<1>

CMP	Length (Bytes)	Data (ASCII)	Meaning
<1>	3	"001" - "256"	Data Length of User Information

(2) Positive Response

JDG (1byte)	RCM (2bytes)		RES (2bytes)	RDT (1~256bytes)
"P"	"u"	"0"	"xx"	<1>

RDT	Length (Bytes)	Data (HEX)	Meaning
1	1~256	Variable	User Information

(3) Negative Response

JDG (1byte)	RCM (2bytes)		RES (2bytes)
"N"	"u"	"0"	"xx"

(4) Detailed Functions

Normal Processing

- The C/R sends the User Information from the top whose length is specified by the command parameter.

Error Processing

- None

7.67 (u1) USER Information Read for Partial FW

(1) Command

IDN (1byte)	CMD (2bytes)		CMP (1bytes)
"C"	"u"	"1"	<1>

CMP	Length (Bytes)	Data (ASCII)	Meaning
<1>	1	"1"	ICC
		"2"	SAM

(2) Positive Response

JDG (1byte)	RCM (2bytes)		RES (36~138bytes)							
"P"	"u"	"1"	"xx"	<1>	<2>	<3>	<4>	...	<8>	<9>

RDT	Length (Bytes)	Data (HEX)	Meaning	
<1>	2	"01" ~ "04"	Changed ICC or SAM mode number	
<2>	0 or 2	"00"	ICC / SAM Module Name	ISO Mode
<3>	32	Variable	User Information for ICC or SAM Module	
<6>	0 or 2	"05"	ICC / SAM Module Name	EMV Mode
<7>	0 or 32	Variable	User Information for ICC or SAM Module	
<8>	0 or 2	"06"	ICC / SAM Module Name	ZKA Mode
<9>	0 or 32	Variable	User Information for ICC or SAM Module	

(3) Negative Response

JDG (1byte)	RCM (2bytes)		RES (2bytes)
"N"	"u"	"1"	"xx"

(4) Detailed Functions

Normal Processing

- The C/R sends the User Information for all ICC modules or SAM module.

Error Processing

- None

7.68 (:6) Transaction Setting

(1) Command

IDN (1byte)	CMD (2bytes)		CMP (4bytes)			
"C"	"."	"6"	<1>	<2>	<3>	<4>

CMP	Length (Byte)	Data (ASCII)	Meaning	
<1>	1	"0"	No Reading	Magnetic Read Direction
		"1"	Insertion Reading	
		"2"	Back Reading	
<2>	1	"0"	No Reading	Magnetic Read Track(s)
		"1"	ISO#1	
		"2"	ISO#2	
		"3"	ISO#3	
		"4"	ISO#1 + ISO#2	
		"5"	ISO#1 + ISO#3	
		"6"	ISO#2 + ISO#3	
		"7"	ISO#1 + ISO#2 + ISO#3	
<3>	1	"0"	Unlock	Automatic lock at the card insertion
		"1"	Lock	
<4>	1	"0"	Unlock	Automatic lock at the card ejection
		"1"	Lock	

(2) Positive Response

JDG (1byte)	RCM (2bytes)		RES (2bytes)
"P"	"."	"6"	"xx"

(3) Negative Response

JDG (1byte)	RCM (2bytes)		RES (2bytes)
"N"	"."	"6"	"xx"

(4) Detailed Functions

Normal Processing

- The C/R sets the magnetic read direction, the track and whether or not the lock is automatically set.
- It clears the magnetic data of all tracks stored in the C/R.
- It unlocks the card.

No Reading (CMP <1>="0")

- The magnetic read is disabled.
- The LED goes out.

Magnetic Insertion Reading (CMP <1>="1")

- If S1 and S2 are OFF when this command is received, the green LED will blink and the C/R will wait for a card to be inserted. If a card exists, the C/R will wait for the card to be pulled out.
- Until S2 turns ON or for the specific time elapses since S1 turns ON, the C/R will read the magnetic data of the track specified by the command parameter. When S1 sensor turns ON, the green LED will go out.
- When one or more tracks are normally read, the green LED will light up. Unless all tracks are normally read, the red LED will light up.
- If the card is pulled out during the magnetic reading, the C/R will stop the magnetic reading, blink the green LED and wait for the card to be inserted.
- When the card is pulled out after completion of the Insertion reading, the C/R will clear the magnetic data in the C/R and wait for the next card to be inserted with the Insertion reading available.

Magnetic Back Reading (CMP <1>="2")

- If S1 and S2 are OFF, the orange LED will blink and wait for the card to be inserted. If no card exists in the C/R, the C/R will wait for the card to be inserted.
- Until S1 turns OFF or for the specific time elapses since S2 turns OFF, the C/R will read the magnetic data of the track specified by the command parameter. When S2 turns OFF, the LED will go out.
- When one or more tracks are normally read, the green LED will light up. Unless all tracks are normally read, the red LED will light up.
- If the card is inserted again during the magnetic reading, the C/R will stop the magnetic reading, make the orange LED light up and wait for the card to be pulled out.
- When the next card is inserted after completion of the magnetic reading, the C/R will clear the magnetic data in the C/R and wait for the next card pulled out with the Back reading available.

Automatic Lock at the Card Insertion (CMP <3>="1")

- When the state change from "S1=OFF and S2=OFF" to "S2=ON" is detected, the lock will be set.

Automatic Lock at the Card Ejection (CMP <4>="1")

- When the state change from "S2=ON" to "S1=OFF and S2=OFF" is detected, the lock will be set.

Error Processing

- None

8. Maintenance Button

8.1 Maintenance Procedures

When the maintenance button is pressed for three seconds, the C/R will inspect each function in accordance with the following procedures. However, when the parts to be inspected are not equipped, the inspection item will be skipped.

- (1) The processing for the command under execution stops.
- (2) The green LED blinks and the C/R waits for a card to be inserted.
- (3) When a card is inserted, the C/R will lock and activate the card.
- (4) The C/R deactivates and unlock the card, blinks the orange LED and waits for the card to be pulled out.
- (5) When the card is pulled out, the C/R will perform the back reading to complete the maintenance procedures.

8.2 LED Indicator

The meaning of LED indicator under maintenance procedures is as follows:

LED Indicator	C/R Status
Green LED Blinking (2Hz)	Waiting for the card to be inserted
Orange LED Blinking (2Hz)	Waiting for the card to be pulled out
Green LED ON	Maintenance procedures has completed successfully. (C/R is waiting for Initial Reset Command)
Red LED ON	Error in Magnetic Reading
Red LED Blinking (1/4Hz)	Error in IC Activation
Red LED Blinking (1Hz)	Error in the lock
Red LED Blinking (4Hz)	Error in the sensor
Orange LED Blinking (1/4Hz)	Error which may indicate tampering
Orange LED Blinking (1Hz)	Error which may indicate the rear destroy

8.3 Command Response Specifications

- Send the **Initial Reset Command ("C00")** from the host to stop the maintenance procedures. When the C/R receives any command other than Initial Reset Command, it will respond with the **Error during Maintenance ("N0A")**.
- After the maintenance procedures complete, send the **Initial Reset Command ("C00")** to return to the normal state. When the C/R receives any command other than Initial Reset Command, it will respond with the **Error after Maintenance ("N0B")**.

9. Host Sequence

This section describes the recommended sequence for the host.

9.1 Insertion Reading

- (1) The host specifies the Insertion Reading with the Transaction Setting Command (C:6). The command parameter specifies which track is to be magnetically read. (ex: Send C:61700.)
- (2) The host polls the insertion of magnetic card (Completion of Insertion Reading) with Card Status Monitoring Command (C92). Set the polling time with a command parameter. (ex: Send C9210.)
- (3) The host obtains the read data with Read Command (C6x) when the magnetic read is completed (Read Result in the response of C92 Command becomes Positive Reading). (ex: Send C6a7 when P920211100 is received for C9210.)
- (4) The host polls the ejection of the inserted card with Card Status Monitoring Command (C92).
- (5) The host waits for the card to be pulled out with Card Status Monitoring Command (C92). When RES=00, go to (2) for next transaction.

9.2 Back Reading

- (1) The host specifies the Back Reading with Transaction Setting Command (C:6). The command parameter specifies which track is to be magnetically read. (ex: Send C:62700.)
- (2) The host polls the insertion of magnetic card with Card Status Monitoring Command (C92). Set the polling time with a command parameter. (Send C9210 and wait for P9202.)
- (3) Next, the host polls the ejection (Completion of Back Reading) with Card Status Monitoring Command (C92). (ex: Send C9210.)
- (4) The host obtains the read data with Read Command (C6x) when the magnetic read is completed (Read Result in the response of C92 Command becomes Positive Reading). (ex: Send C6a7 when P920011100 is received for C9210.)
- (5) Go to (2) for next transaction, if any.

9.3 Insertion Reading + ICC Transaction

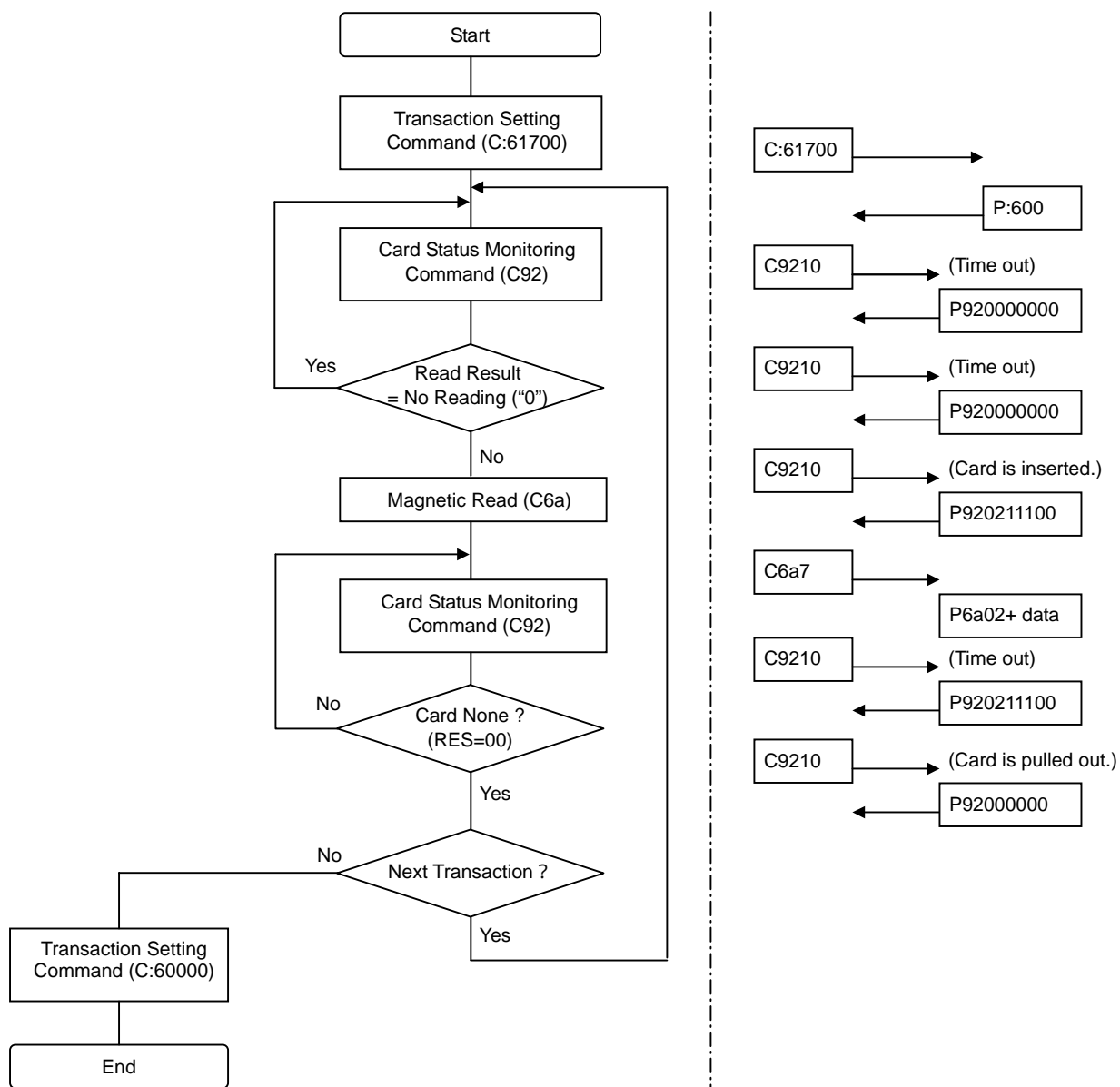
- (1) The host specifies the Insertion Reading with Transaction Setting Command (C:6). The command parameter specifies which track is to be magnetically read. (ex: Send C:61710.)
- (2) The host polls the insertion of magnetic card (Completion of Magnetic Read) with Card Status Monitoring Command (C92). Set the polling time with a command parameter. (ex: Send C9210.)
- (3) The host obtains the read data with Read Command (C6x) when the magnetic read is completed (Read Result in the response of C92 Command becomes Positive Reading). At this time, the card has been already locked. (ex: Send C6a7 when P921011100 is received for C9210.)
- (4) Next, for the transaction with the ICC, ICC is activated and the data are transmitted. (ex: Send CC2 and CF1 Commands.)
- (5) When data transmission with ICC is completed, ICC is deactivated and unlocked. (ex: Send CC3 and CC1.)
- (6) The host waits for the card to be pulled out with Card Status Monitoring Command (C92). When RES=00, go to (2) for next transaction.

9.4 Back Reading + ICC Transaction

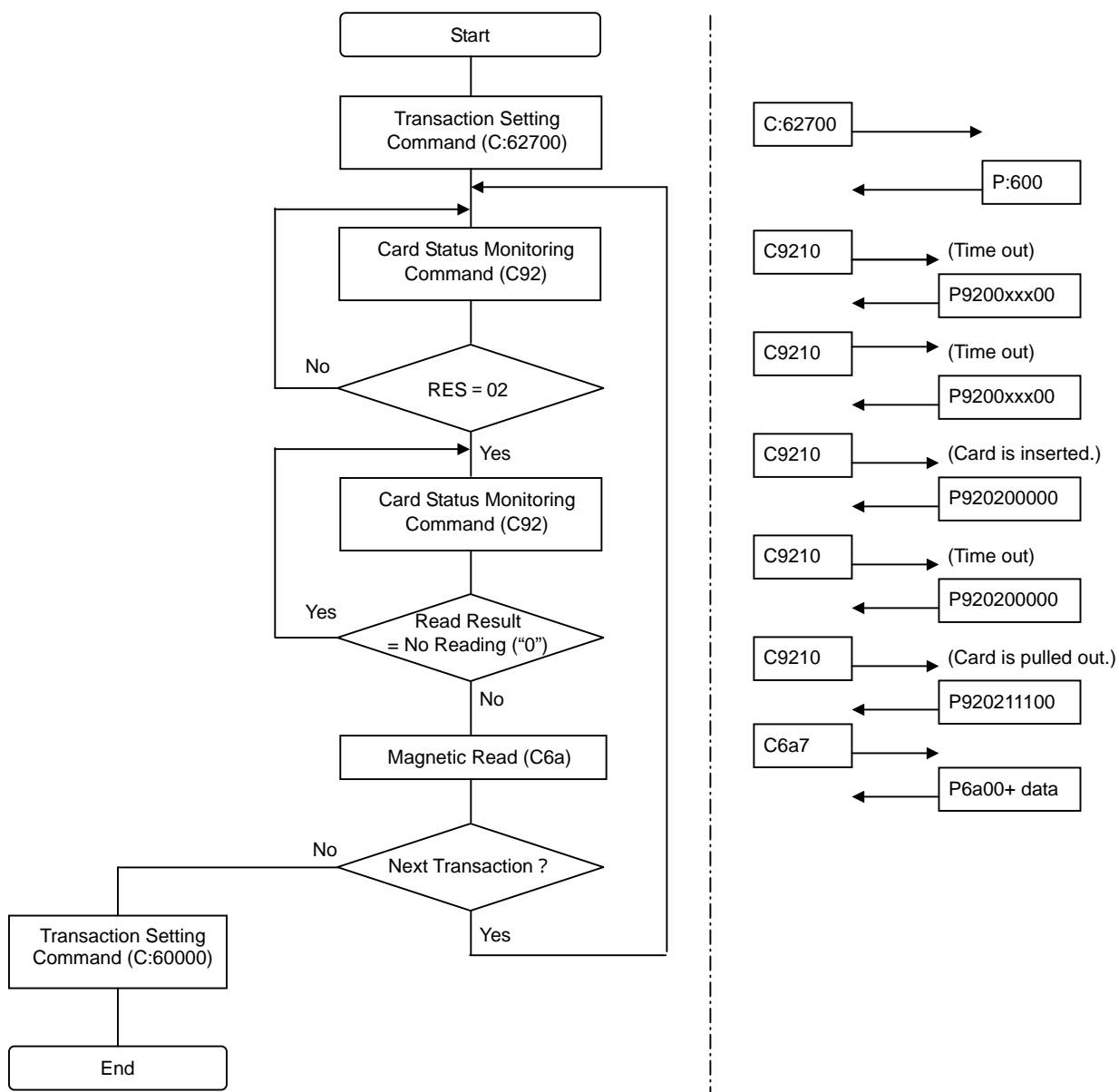
- (1) The host specifies the Back Reading with Transaction Setting Command (C:6). The command parameter specifies which track is to be magnetically read. Also, make the setting so that the card will be locked after card insertion is completed. (ex: Send C:62710.)
- (2) The Host polls the card insertion with Card Status Monitoring Command (C92). Set the polling time with a command parameter. (ex: Send C9210.)
- (3) When the card insertion is completed (when the response of C92 Command becomes RES=10), the ICC card is activated and the data are transmitted for the transaction with ICC. (ex: Send CC2 and CF1 Commands.)
- (4) When data transmission with ICC is completed, ICC is deactivated and unlocked. (ex: Send CC3 and CC1.)
- (5) The Host waits for the card to be pulled out with Card Status Monitoring Command (C92). When RES=00, go to (2) for next transaction.

10. Host Sequence Flowchart

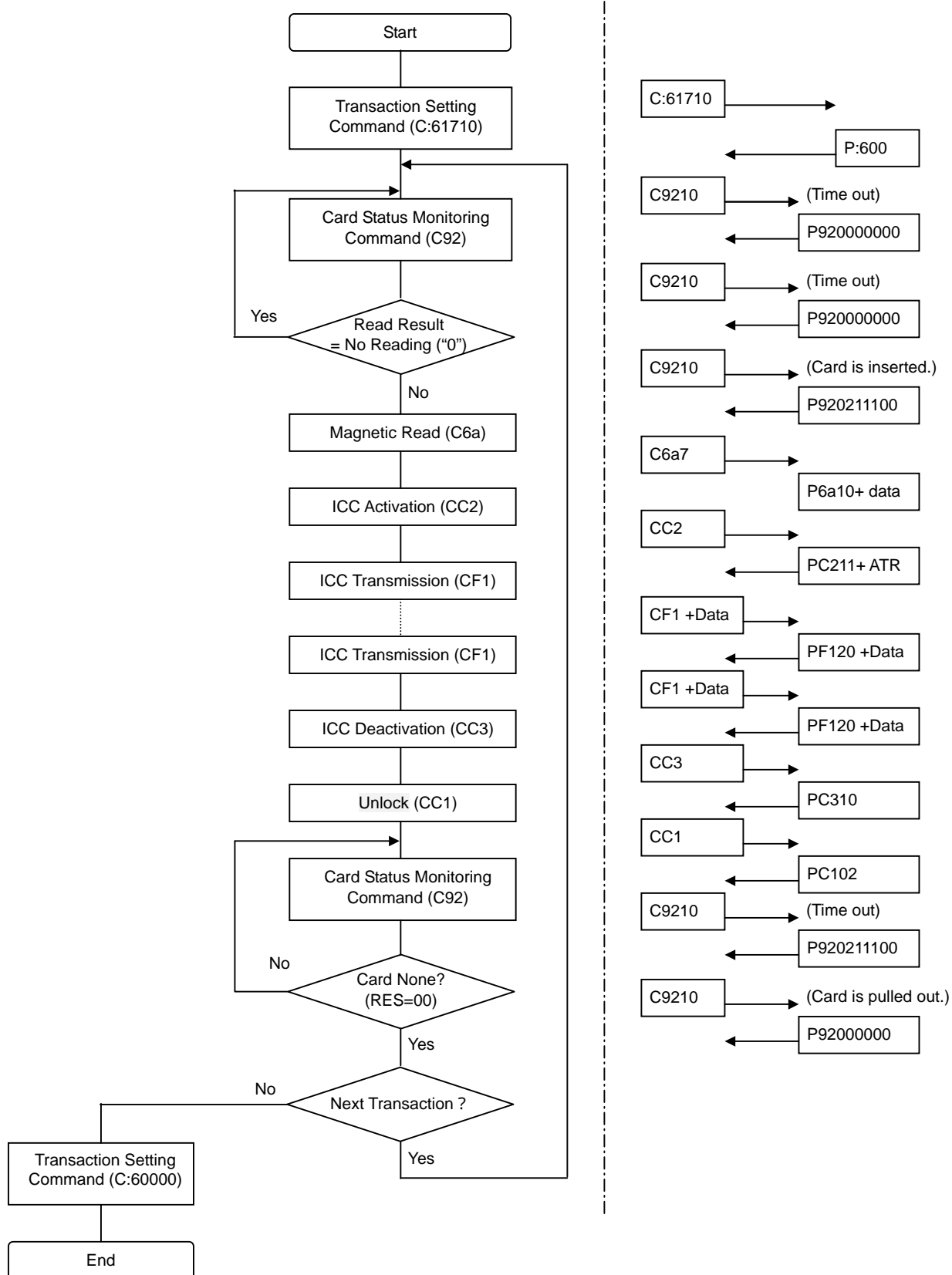
10.1 Insertion Reading



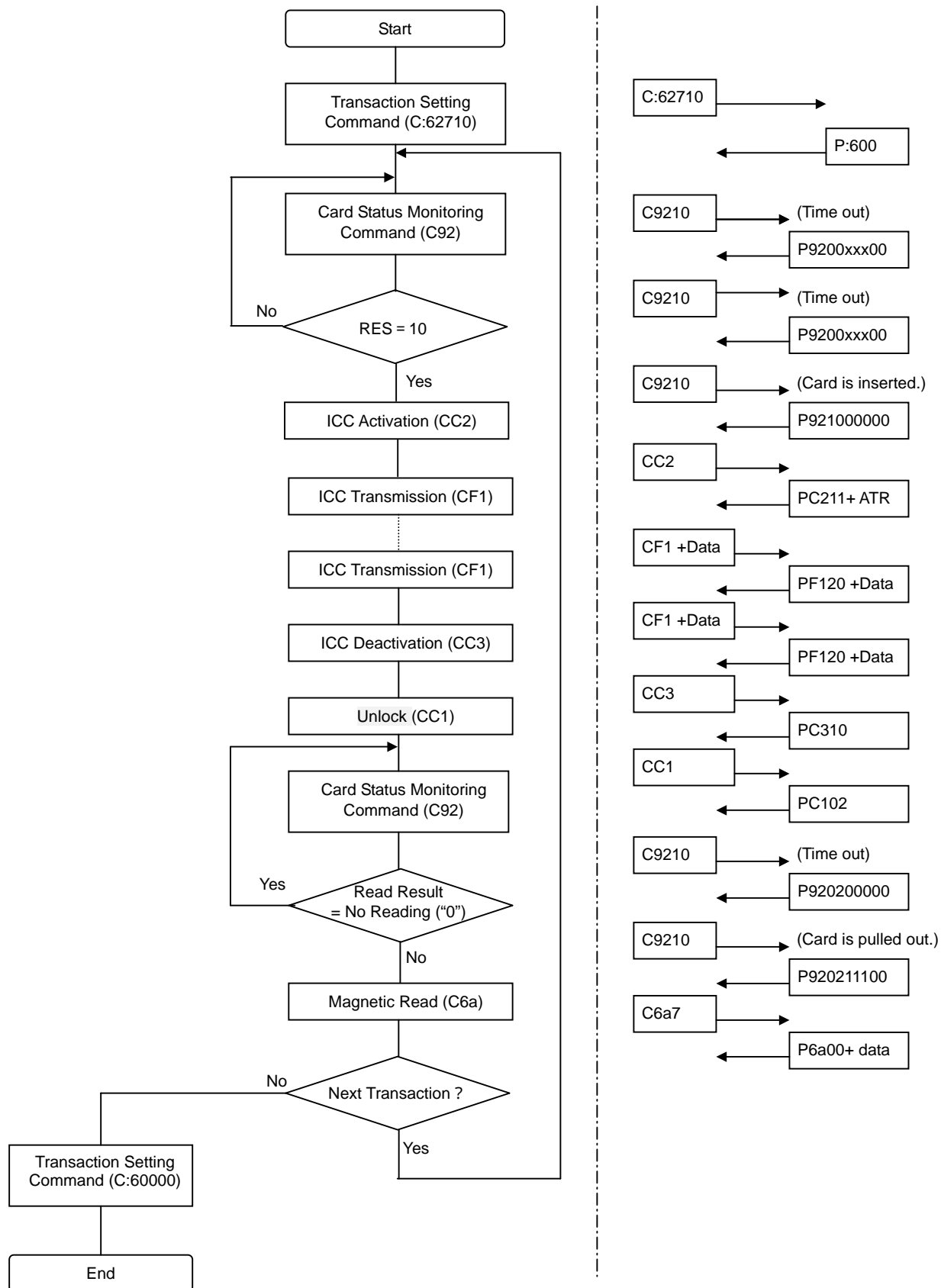
10.2 Back Reading



10.3 Insertion Reading + ICC Transaction

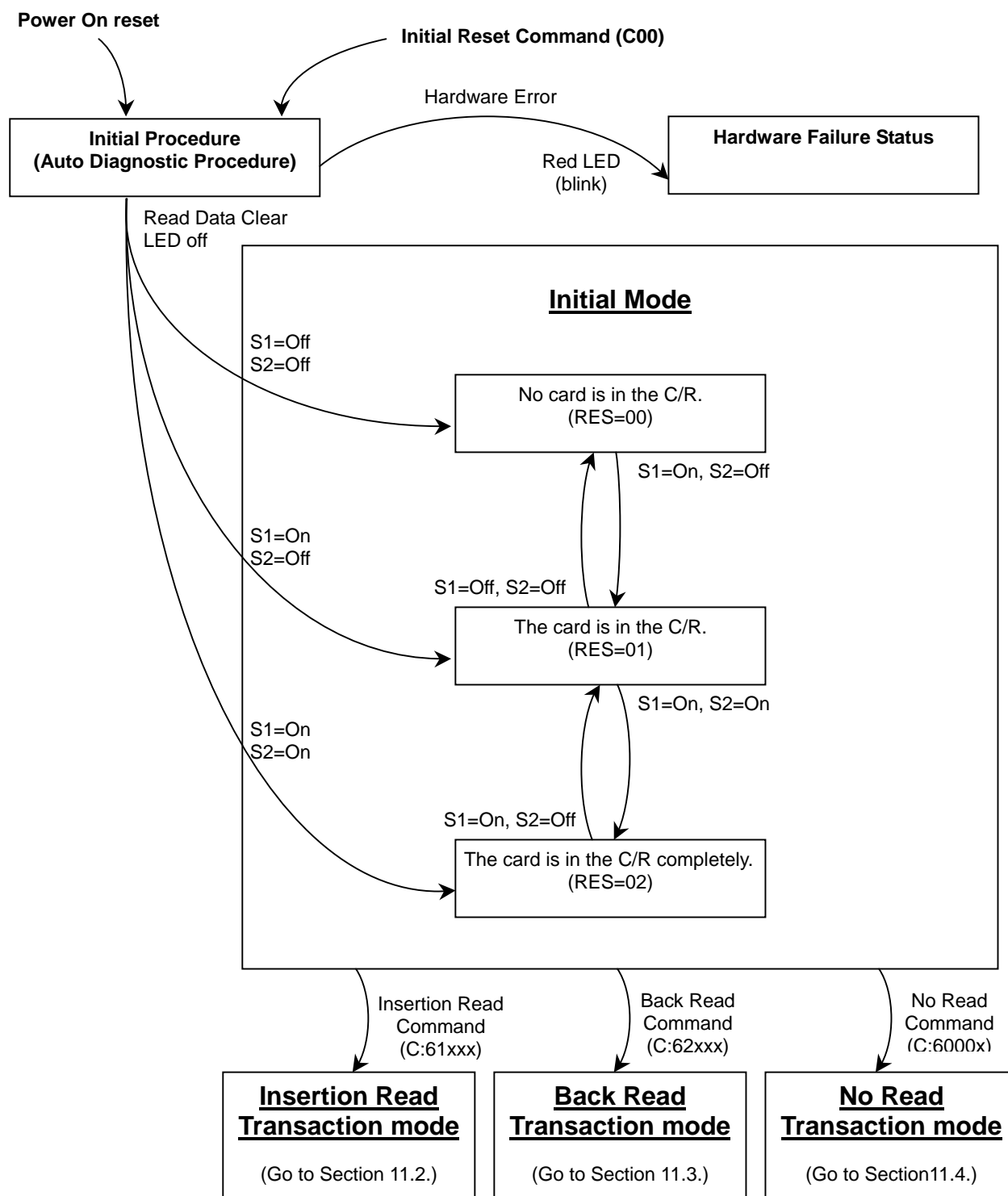


10.4 Back Reading + ICC Transaction

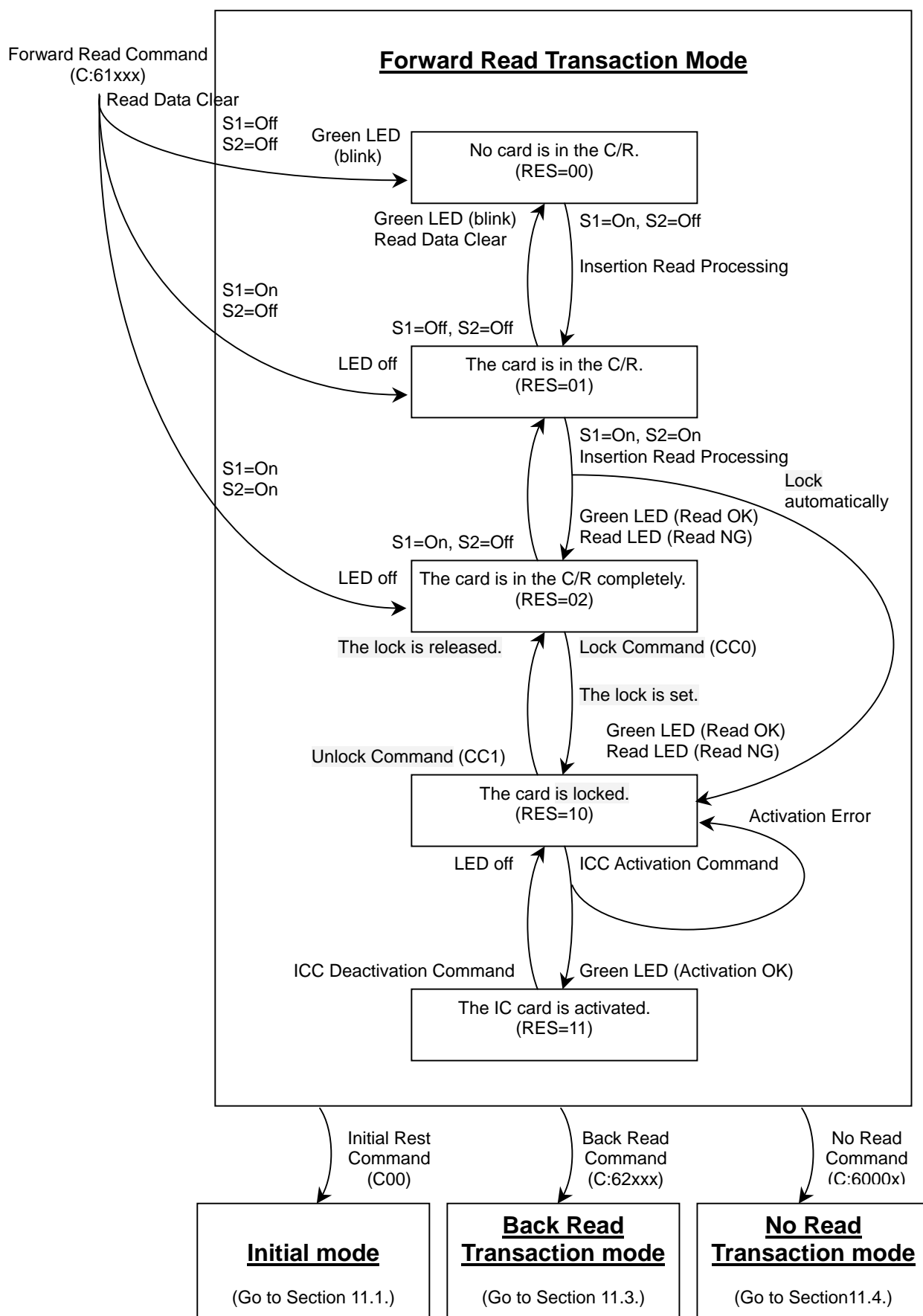


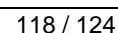
11. Card Reader Status Change Chart

11.1 No Read Mode

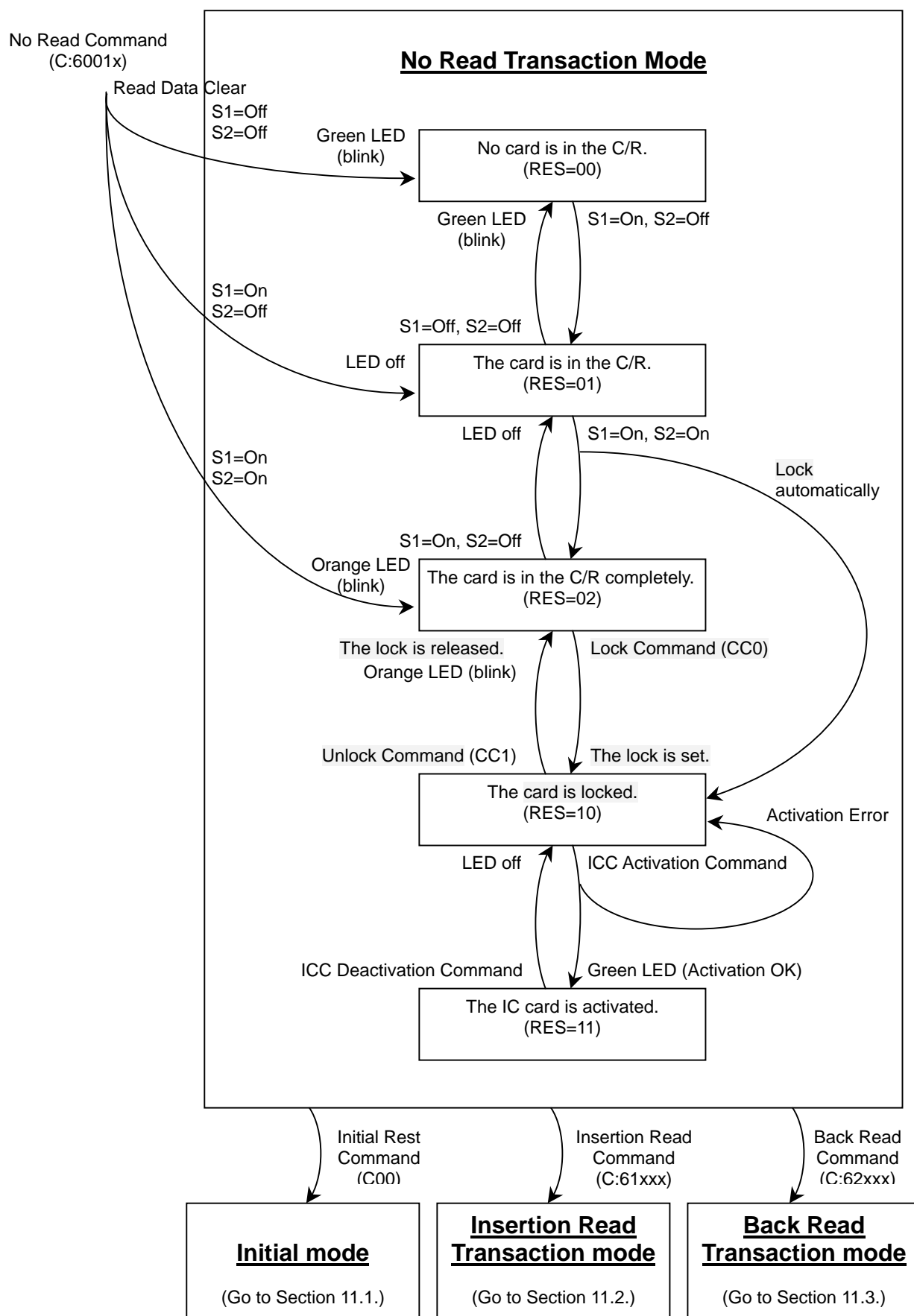


11.2 Forward Read Mode





11.4 No Read Transaction Mode (ICC Transaction only)

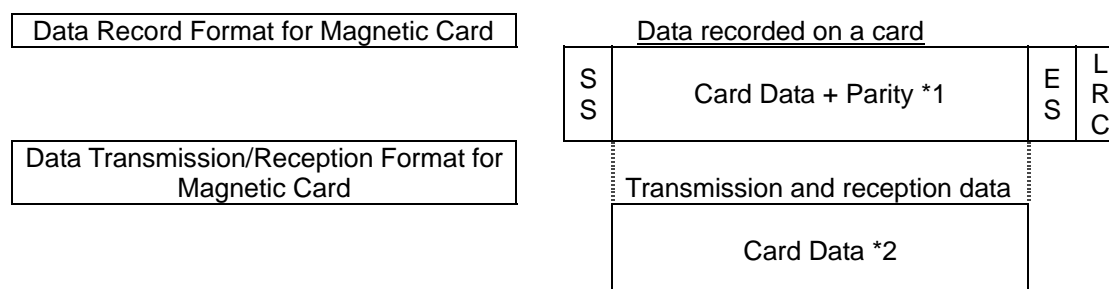


12. Magnetic Card Data Record Format

Item	Track	ISO 1	ISO 2	ISO 3
Character Length (including parity)		7 bits	5 bits	5 bits
Parity		odd	odd	odd
Longitudinal Calculation Method (LRC) *1		even LRC	even LRC	even LRC
Top Character		"SP"	"0"	"0"
Start Sentinel (SS)		"0/ "	"."	"."
End Sentinel (ES)		"?"	"?"	"?"
Data Length (byte)		1-76	1-37	1-104

(1) *Card Data Configuration of ISO Track (1 - 3)

All the data recorded on a card except parity are transmitted and received in ASCII code as a command or a response by the Host and the C/R.



*1 Data recorded on a card includes both card data and parity data.

*2 The data transmitted/received by the HOST or the C/R is only card data not including the parity.

(2) Character Code Setting of ISO 1 Track

One character on the ISO 1 Track consists of 6 bits. Only the ASCII codes shown below are usable.

				b6	0	0	1	0
				b5	0	1	0	0
b4	b3	b2	b1	row column	2	3	4	5
0	0	0	0	0	SP	0	@ (*1)	P
0	0	0	1	1	! (*1)	1	A	Q
0	0	1	0	2	" (*1)	2	B	R
0	0	1	1	3	# (*3)	3	C	S
0	1	0	0	4	\$	4	D	T
0	1	0	1	5	% (*4)	5	E	U
0	1	1	0	6	& (*1)	6	F	V
0	1	1	1	7	' (*1)	7	G	W
1	0	0	0	8	(8	H	X
1	0	0	1	9)	9	I	Y
1	0	1	0	A	* (*1)	: (*1)	J	Z
1	0	1	1	B	+ (*1)	; (*1)	K	[(*2)
1	1	0	0	C	, (*1)	< (*1)	L	(*2)
1	1	0	1	D	-	= (*1)	M] (*2)
1	1	1	0	E	.	> (*1)	N	^ (*4)
1	1	1	1	F	/	? (*1)	O	_ (*1)

*1. These characters can be used only for hardware control. Do not use in card data.

*2. Do not use these characters for cards used internationally.

*3. These characters have been prepared for use as the additional diagram characters. Do not use in the Card Data.

*4. Each character represents as follows:

"%": Start Sentinel (SS)

"?": End Sentinel (ES)

"^": Separator

Because the restrictions shown above, however, do not apply to LRC, all codes in the table are usable for LRC.

(3) Character Code Setting of ISO 2 and 3 Track

Each character on the ISO 2 and 3 consists of 4 bits. Only the following ASCII codes are usable:

bit				row	Character
b4	b3	b2	b1		
0	0	0	0	0	0
0	0	0	1	1	1
0	0	1	0	2	2
0	0	1	1	3	3
0	1	0	0	4	4
0	1	0	1	5	5
0	1	1	0	6	6
0	1	1	1	7	7
1	0	0	0	8	8
1	0	0	1	9	9
1	0	1	0	A	: (*1)
1	0	1	1	B	; (*2)
1	1	0	0	C	< (*1)
1	1	0	1	D	= (*3)
1	1	1	0	E	> (*1)
1	1	1	1	F	? (*4)

*1. These characters can be used only for hardware control. Do not use in card data.

*2. ",:": Start Sentinel (SS)

*3. "=": Separator

*4. "?": End sentinel (ES)

Because the restrictions shown above, however, do not apply to LRC, all codes in the table are usable for LRC.

13. Supportable Transmission Factors F and D

13.1 IC Card handling

(1) Specific Mode

C/R supports the following TA1 (F and D) in the specific mode.

TA1(BIN)	F	D	Frequency (MHz)	Transmission speed (usec/1etu)
01H	372	1	3.5712	About 104 usec (9600bps)
02H	372	2	3.5712	About 52 usec (19200bps)
03H	372	4	3.5712	About 26 usec (38400bps)
11H (Default)	372	1	3.5712	About 104 usec (9600bps)
12H	372	2	3.5712	About 52 usec (19200bps)
13H	372	4	3.5712	About 26 usec (38400bps)
31H	744	1	7.1424	About 104 usec (9600bps)
32H	744	2	7.1424	About 52 usec (19200bps)
33H	744	4	7.1424	About 26 usec (38400bps)
34H	744	8	3.5712	About 26 usec (38400bps)
48H	1116	12	3.5712	About 26 usec (38400bps)
52H	1488	2	7.1424	About 104 usec (9600bps)
53H	1488	4	7.1424	About 52 usec (19200bps)
54H	1488	8	7.1424	About 26 usec (38400bps)
55H	1488	16	3.5712	About 26 usec (38400bps)
69H	1860	20	3.5712	About 26 usec (38400bps)

(2) Negotiable Mode (PPS request)

C/R executes PPS request when in the negotiable mode ATR is the following TA1 (F and D).

TA1			PPS1 of PPS Request			Transmission speed after PPS success.	
Value (BIN)	F	D	Value (BIN)	F	D	Frequency (MHz)	Time of 1 etu
01H	372	1	01H	372	1	3.5712	About 104 usec (9600bps)
02H	372	2	02H	372	2	3.5712	About 52 usec (19200bps)
03H	372	4	03H	372	4	3.5712	About 26 usec (38400bps)
04H	372	8					
05H	372	16					
06H	372	32					
08H	372	12					
09H	372	20					
11H	372	1	11H	372	1	3.5712	About 104 usec (9600bps)
12H	372	2	12H	372	2	3.5712	About 52 usec (19200bps)
13H	372	4	13H	372	4	3.5712	About 26 usec (38400bps)
14H	372	8					
15H	372	16					
16H	372	32					
18H	372	12					
19H	372	20					
31H	744	1	31H	744	1	7.1424	About 104 usec (9600bps)
32H	744	2	32H	744	2	7.1424	About 52 usec (19200bps)
33H	744	4	33H	744	4	7.1424	About 26 usec (38400bps)
34H	744	8					
35H	744	16					
36H	744	32					
38H	744	12					
39H	744	20					
48H	1116	12	48H	1116	12	3.5712	About 26 usec (38400bps)
52H	1488	2	52H	1488	2	7.1424	About 104 usec (9600bps)
53H	1488	4	53H	1488	4	7.1424	About 26 usec (38400bps)
54H	1488	8	54H	1488	8	7.1424	
55H	1488	16	55H	1488	16	3.5712	
69H	1860	20	69H	1860	20	3.5712	

13.2 SAM handling

(1) Specific Mode

The C/R supports the following TA1 (F and D) in the specific mode.

TA1(BIN)	F	D	Frequency (MHz)	Transmission speed (usec/1etu)
01H	372	1	3.5712	About 104 usec (9600bps)
02H	372	2	3.5712	About 52 usec (19200bps)
03H	372	4	3.5712	About 26 usec (38400bps)
11H (Default)	372	1	3.5712	About 104 usec (9600bps)
12H	372	2	3.5712	About 52 usec (19200bps)
13H	372	4	3.5712	About 26 usec (38400bps)
34H	744	8	3.5712	About 26 usec (38400bps)
48H	1116	12	3.5712	About 26 usec (38400bps)
55H	1488	16	3.5712	About 26 usec (38400bps)
69H	1860	20	3.5712	About 26 usec (38400bps)

(2) Negotiable Mode (PPS request)

The C/R executes PPS request in the negotiable mode when ATR is the following TA1 (F and D).

TA1			PPS1 of PPS Request			Transmission speed after PPS success.	
Value (BIN)	F	D	Value (BIN)	F	D	Frequency (MHz)	Time of 1 etu
01H	372	1	01H	372	1	3.5712	About 104 usec (9600bps)
02H	372	2	02H	372	2	3.5712	About 52 usec (19200bps)
03H	372	4	03H	372	4	3.5712	About 26 usec (38400bps)
04H	372	8					
05H	372	16					
06H	372	32					
08H	372	12					
09H	372	20					
11H	372	1	11H	372	1	3.5712	About 104 usec (9600bps)
12H	372	2	12H	372	2	3.5712	About 52 usec (19200bps)
13H	372	4	13H	372	4	3.5712	About 26 usec (38400bps)
14H	372	8					
15H	372	16					
16H	372	32					
18H	372	12					
19H	372	20					
48H	1116	12	48H	1116	12	3.5712	
55H	1488	16	55H	1488	16	3.5712	
69H	1860	20	69H	1860	20	3.5712	