

TMC635

Application Manual



| | | | |
|--|---|------|------------|
| |  TMC635 Manual | Date | 2014-02-05 |
| | | Rev | 1.2 |
| | | Page | 1-2 |

Document Revision History

| Doc ver. | Release date | Description of change |
|----------|--------------|--|
| 1.1 | 29/01/2014 | 1 st Release of this document |
| 1.2 | 05/02/2014 | 2 st Release of this document |
| | | |
| | | |
| | | |
| | | |

| | | | |
|--|---|------|------------|
| |  TMC635 Manual | Date | 2014-02-05 |
| | | Rev | 1.2 |
| | | Page | 1-3 |

Contents

| | |
|---|----------|
| Before You Begin | 4 |
| Chapter 1: Bluetooth..... | 4 |
| Chapter 2: Wireless LAN (WLAN)..... | 6 |
| Chapter 3: Setting of Sound, Backlight, Resolution | 9 |

| | | |
|---|------|------------|
|  | Date | 2014-02-05 |
| | Rev | 1.2 |
| | Page | 1-4 |

Before You Begin

This document is helpful for the person who is responsible for demonstrating the functions and features of TMC635 mobile computer. Before you work with this document, you should be familiar with your network environment and general networking terms.

Chapter 1: Bluetooth

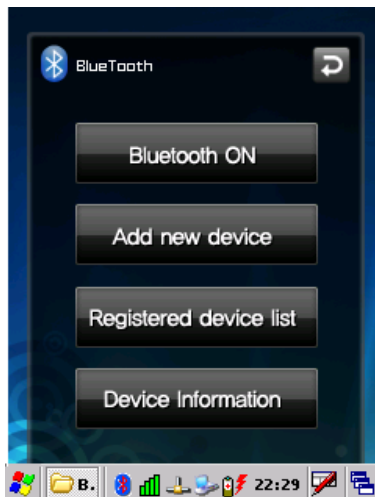
About Bluetooth


You can pair with various Bluetooth accessories such as Bluetooth ear-set, Bluetooth Mobile printer and Bluetooth –equipped PC and communicate with these.



Bluetooth Searching & Pairing

On the Home screen, **My Device > Flash Disk > SYS_APP> BlueTooth**

Follow above path and double tap **BluetoothHSSP** to open Bluetooth manager.



If Bluetooth is activated,  icon will be shown on the system tray.

If you want to de-activate Bluetooth, hold  for a while. Then  in the system tray will disappear.

- **Bluetooth ON** ; Turn on Bluetooth power and activate Bluetooth.
- **Bluetooth OFF** ; Once Bluetooth is turned on, **Bluetooth OFF** button will be shown. Tap **Bluetooth OFF** button to turn off Bluetooth power.

| | | | |
|--|---|------|------------|
| |  | Date | 2014-02-05 |
| | | Rev | 1.2 |
| | | Page | 1-5 |

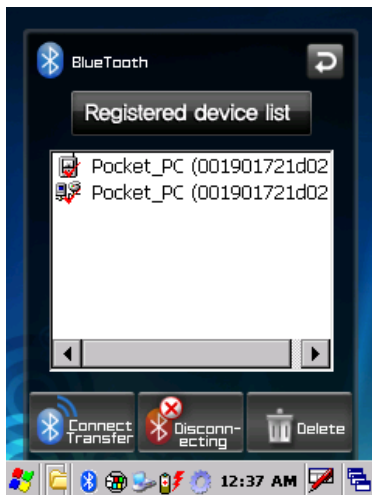
- **Add new device ;**



- **Re-searching ;** Tap **Re-searching** if you want to re-search to discover other device. Make sure that the device that you want to connect is turned on prior to searching.

- **Cancel ;** Tap **Cancel** to stop searching.

- **Registration ;** Select the device on the search result which you want to pair and tap **Registration** to add to the device list. Follow directions on the screen and enter PIN code, usually “0000”. If connected, it will move to registered device list window and show registered device.



- **Connect Transfer ;** If once paired, you can connect to registered device and communication such as file transfer can be possible.

- **Disconnecting ;** If you don't want to or cancel connecting, tap **Disconnecting**.

- **Delete ;** If you want to delete from the list, select the device and tap **Delete**.

| | | | |
|--|---|------|------------|
| |  | Date | 2014-02-05 |
| | | Rev | 1.2 |
| | | Page | 1-6 |

- **Registered device list** ; As shown in previous figures, once paired and registered device list will be shown.
- **Device Information** ; Information on Bluetooth such as device name, ID, supported profile and so on will be shown.

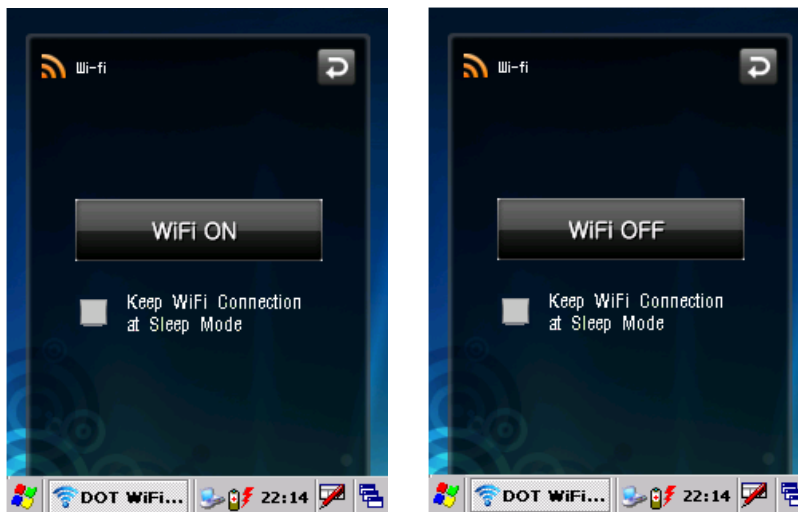


Chapter 2: Wireless LAN (WLAN)

About WLAN

You can connect to an ISP or work network to browse the web and read e-mail.

Turn On/Off WLAN



| | | |
|---|------|------------|
|  | Date | 2014-02-05 |
| | Rev | 1.2 |
| | Page | 1-7 |


- **WIFI ON** ; Will turn on WLAN power and connect to assigned SSID automatically if it is configured previously. If it is not configured yet, it will open WLAN configuration window.
- **WIFI OFF** ; Will close WLAN and Turn off WLAN power.


There are different configurations depending on WLAN adapter which is product option. For more information, consult our salesperson.


You can find WLAN adapter information as follows.

Control Panel > SCU

Case : Summit 30AG Series WLAN

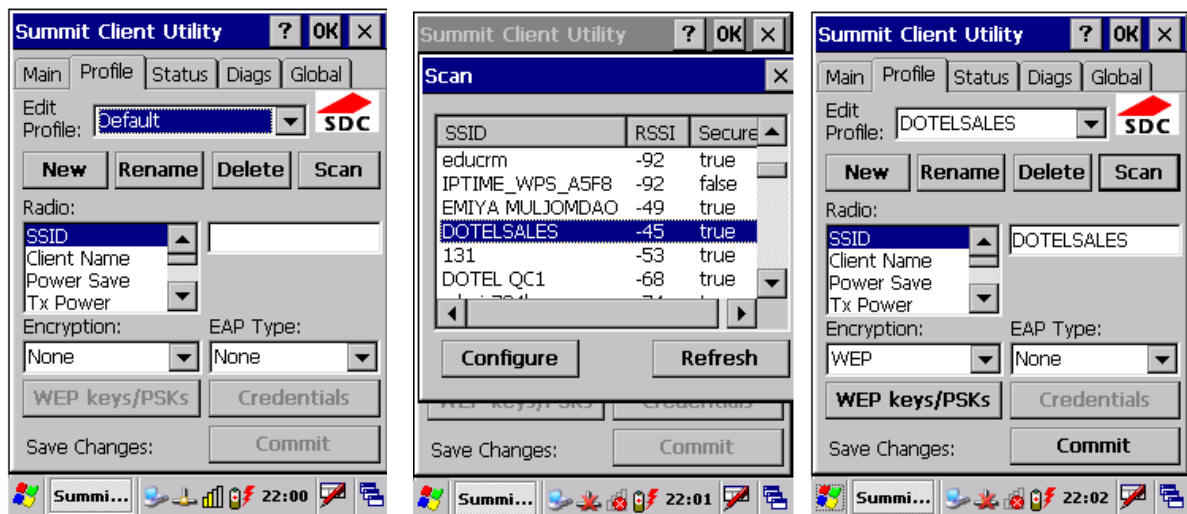
After **WLAN Insert**, follow icon appears next to .

 : WLAN not connected. Double-tap this icon to edit WLAN configurations

 : WLAN is associated with AP and show received signal strength as bar graph and color.

Double-tap this icon to view and configure WLAN adapter.

To Configure WLAN Adapter :



1. Tap **Scan** in **Profile** tab to search AP's name (Service Set Identifier :SSID) available.

2. Select the AP from the scanned SSID list to connect and tap **Configure**.

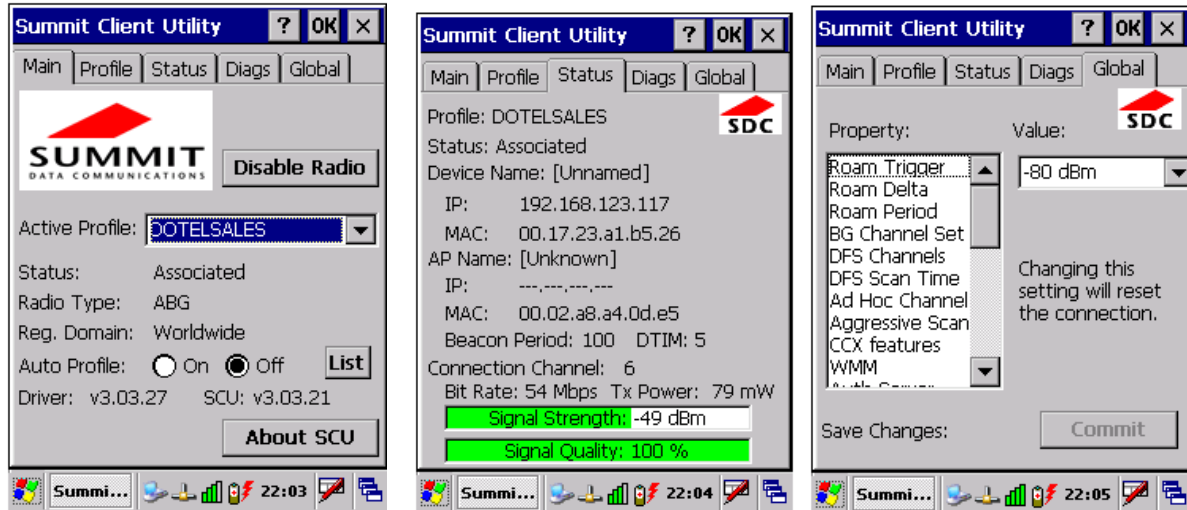
Dialog box pops up to make a new profile of SSID and may be prompted to enter credentials or keys.




3. Tap **Commit** and move to **Main** tab. Set a newly configured SSID as an active profile.

Once active profile is assigned, it always try to connect to this SSID.

| | | |
|---|------|------------|
|  | Date | 2014-02-05 |
| | Rev | 1.2 |
| | Page | 1-8 |

After configured, you can see the related information as follows.

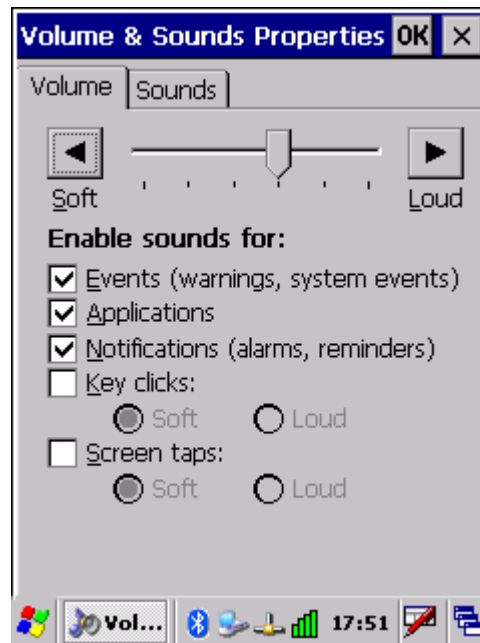
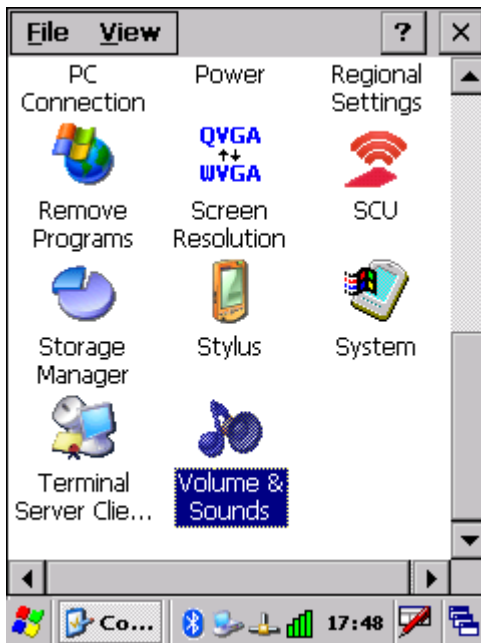
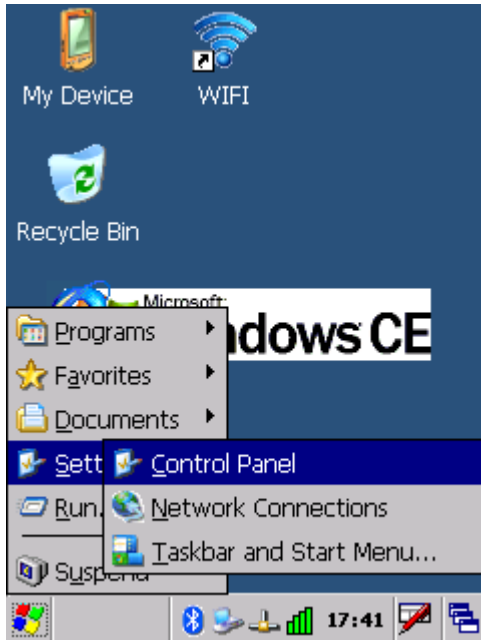


After WLAN connected,  will be shown in the system tray.  indicates WLAN signal quality and  indicates that the mobile computer is networked through WLAN adapter.

| | | |
|---|------|------------|
|  | Date | 2014-02-05 |
| | Rev | 1.2 |
| | Page | 1-9 |

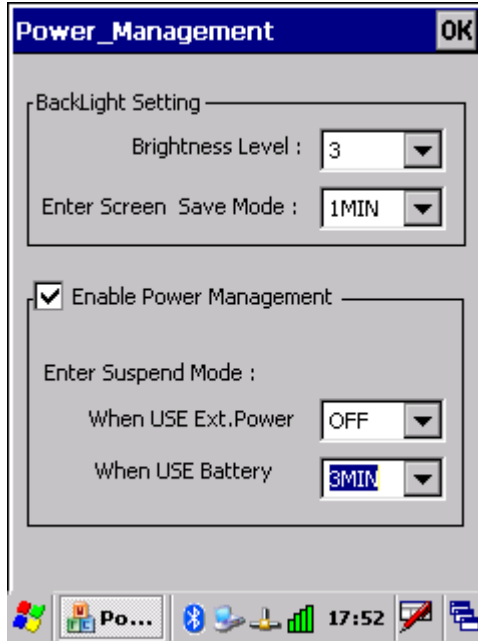
Chapter 3: Setting of Sound, Backlight, Resolution

Go to **Start > Settings > Control Panel** to open the Control Panel window.

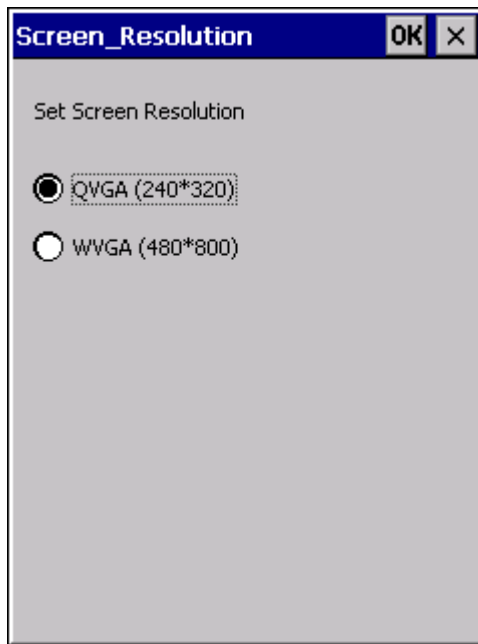
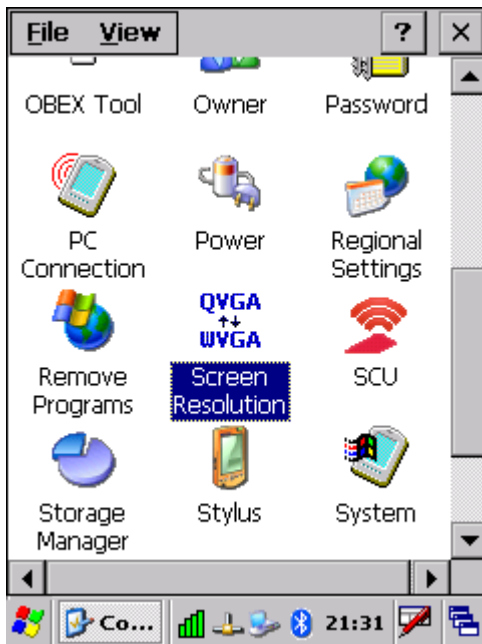


- **Volume Config**

| | | |
|---|------|------------|
|  | Date | 2014-02-05 |
| | Rev | 1.2 |
| | Page | 1-10 |

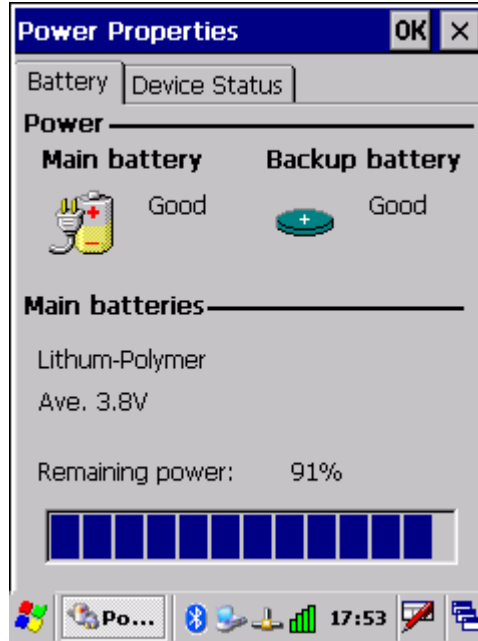


- **BackLight Config**

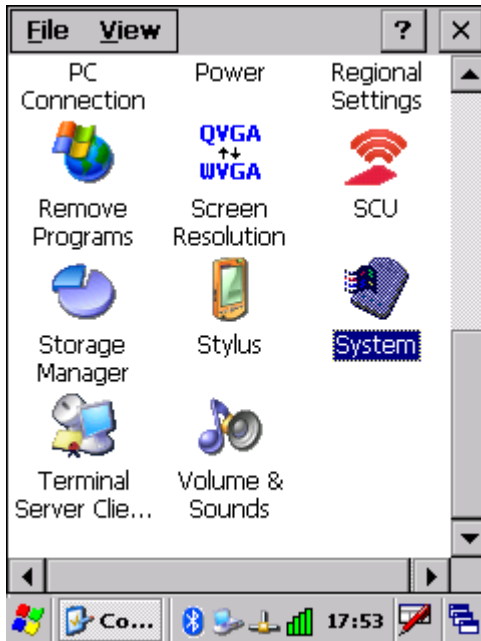


- **Resolution**

| | | |
|---|------|------------|
|  | Date | 2014-02-05 |
| | Rev | 1.2 |
| | Page | 1-11 |



- Power Info



- System Info