

## Mac CPCL Driver installation

### 1.1. Installation.

1. Extract this archive creating the aureslabel\_bin directory automatically.

```
# tar -zxvf aureslabel_bin.tar.gz [Enter]
```

2. Open your favorite shell (bash, etc.) and move to the aureslabel\_bin directory.

```
# cd aureslabel_bin [Enter]
```

3. Execute the 'su' command to obtain super-user level permissions.

You must enter the root user's password for this to succeed. Be careful!.

4. Type 'sudo sh setup.sh' to install this package onto your computer.

```
# sudo sh setup.sh [Enter]
```

**A successfull install should result in output similar to this:**

AURES Technologies

AURES Technologies CPCL CUPS DRIVER Mac OS Installer

-----

Models included:

AURES SMP 58

AURES SLP 580

Searching for ServerRoot, ServerBin, and DataDir tags in /etc/cups/cupsd.conf

ServerBin tag not present in cupsd.conf - using default

DataDir tag not present in cupsd.conf - using default

ServerRoot =

ServerBin =

DataDir =

Copying rastersmp58 filter to /usr/libexec/cups/filter

Copying rasterslp580 filter to /usr/libexec/cups/filter

Copying model ppd files to //usr/share/cups/model/AURES

Restarting CUPS

Install Complete

Add printer queue using Printing Manager, or

Add printer queue using OS tool, <http://localhost:631>, or <http://127.0.0.1:631>

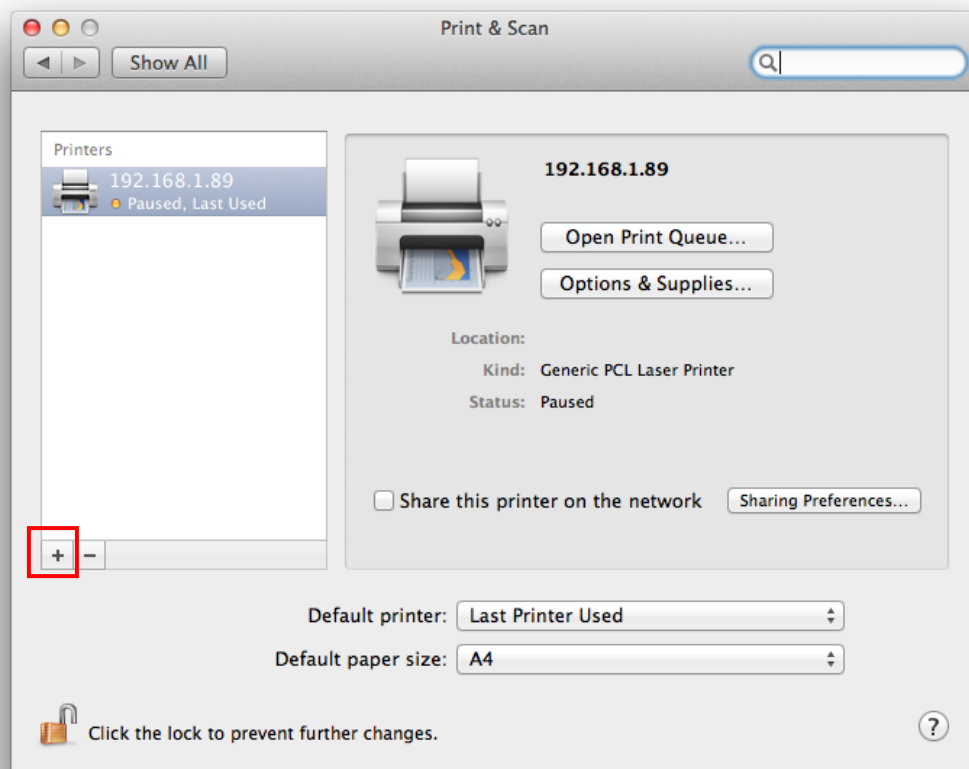
## 1.2. How to Add Printer ( Example : SMP 58)

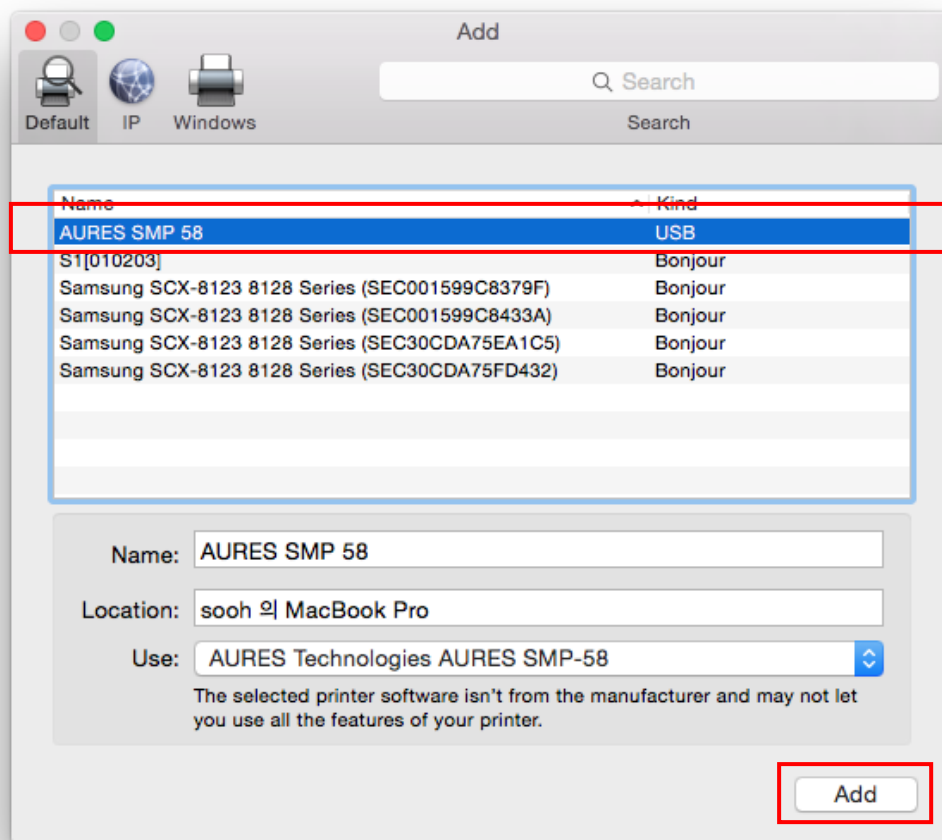
System Preferences → Print & Scan or <http://127.0.0.1:631>

1.2.1. On the Apple menu, click System Preferences and click Print & Scan.

1.2.2. Connect the printer to desktop and turn on the printer.

1.2.3. Click the “+” button to add printer.



**1.2.4. Select “AURES SMP 58” and click “Add” button.**

### 1.2.5. Complete.

