



## Sango VFD and OCD300 configuration

1. Launch the utility  
You can find it on our website [www.aures-support.com](http://www.aures-support.com)
2. Select **Scan Device** :

**P07303-II Customer Display Utility**  
V 1.1.11.0


**Scan Device**

How to Use

Check Settings

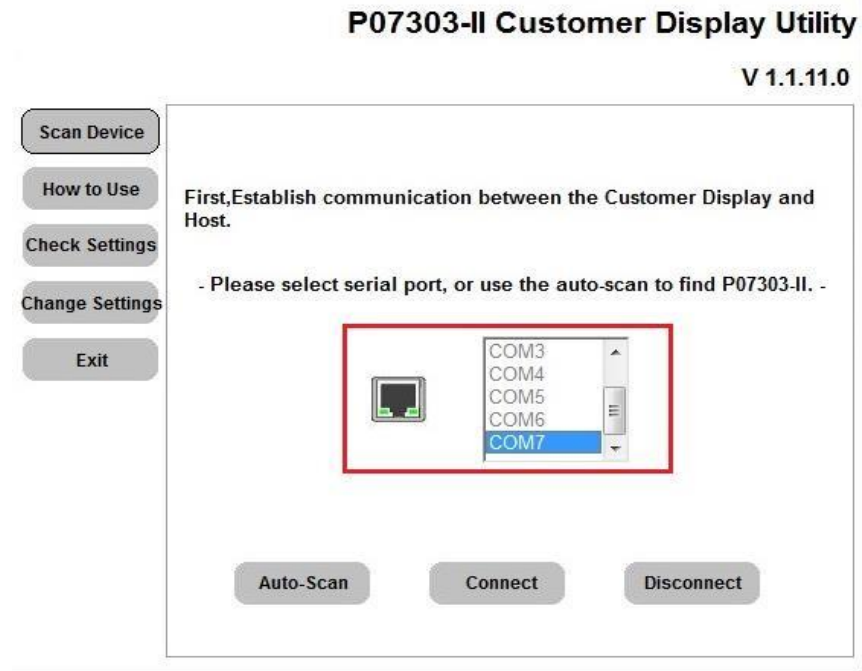
Change Settings

Exit

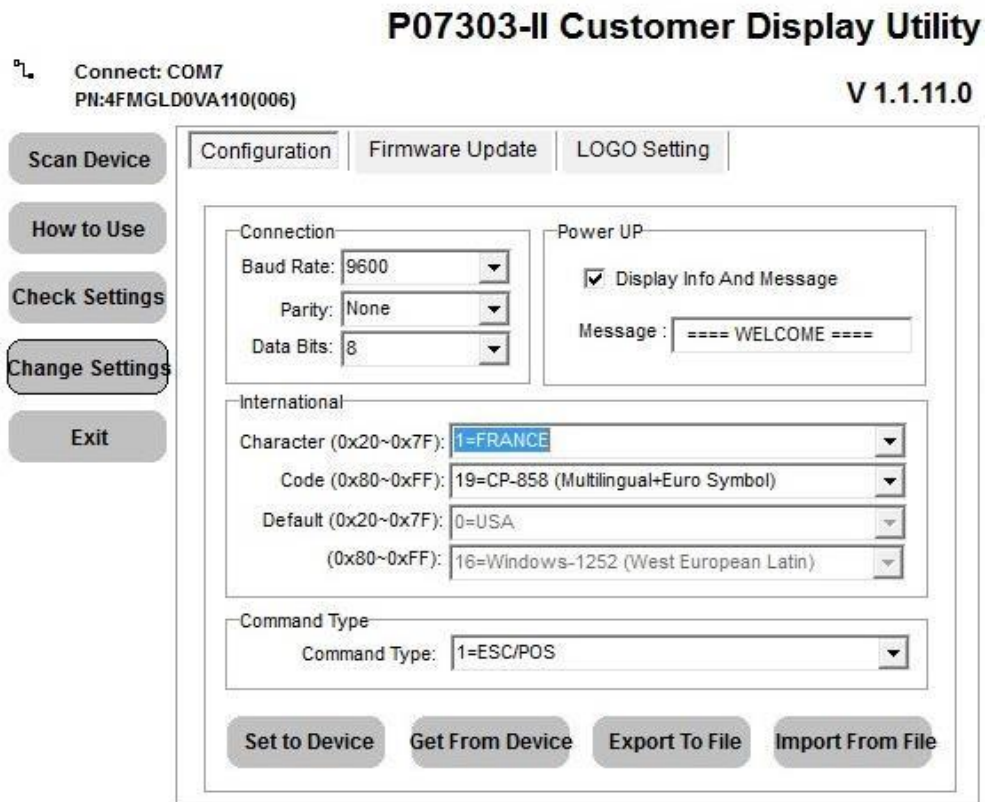


5. Supports 1 kin of user defined character & power on message setting  
6. Provide interface based RS-232C and baud rate from 4800 to 38400 bps and 7/8 bit length code.  
7. Supports handshaking function  
8. USB interface support (virtual COM port, driver install request)  
9. Customer Display pass through function allows printer and customer display to share one port. (RS232 interface only)  
10. Supports 7 kinds of command type.

3. Select the COM port of the VFD (COM7 on SANGO) or use the Auto-Scan function then click on **Connect**  
(the com port need to be closed and not in use by any application)



4. Select **Change Settings** and configure the VFD as requested by your application :



5. Save the configuration with **Set To Device**.