

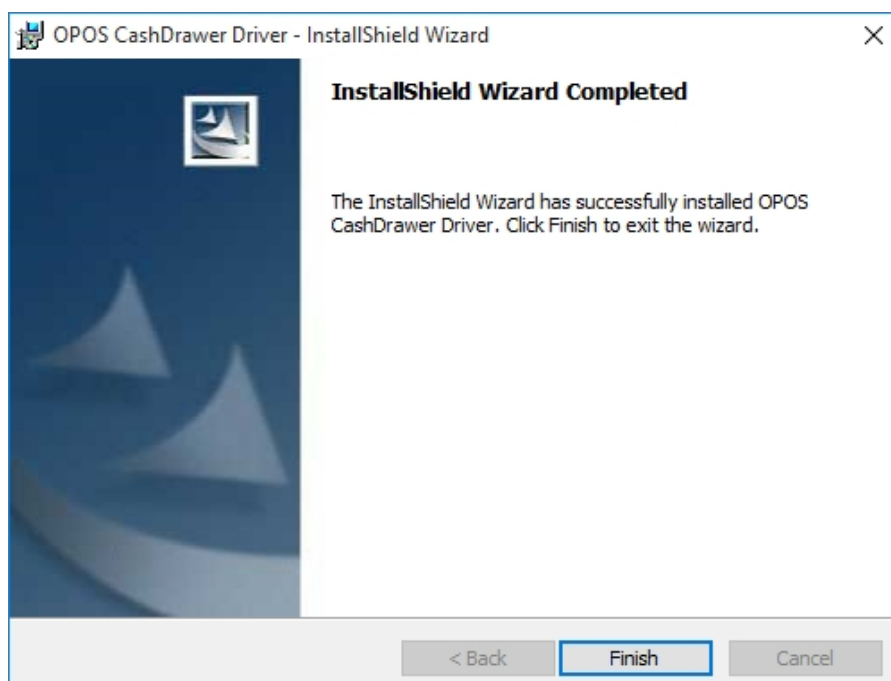
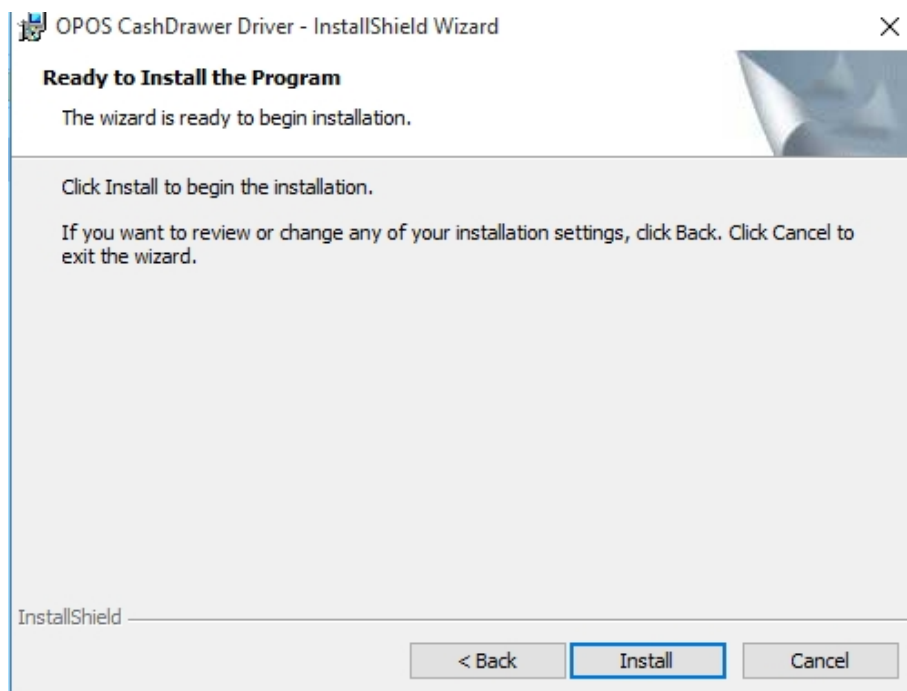
OPOS DRIVER V1.0.15.3 Installation Guide

1. Install “ OPOS CCO v1.6 Runtime” or late version

 OPOS CCO v1.6 Runtime 2003/4/1 下午 12:00 Application

2. Install OPOS Driver

 setup 2015/12/31 下午 0... Application



3. Use Administration to execute “regedit.exe”, go to

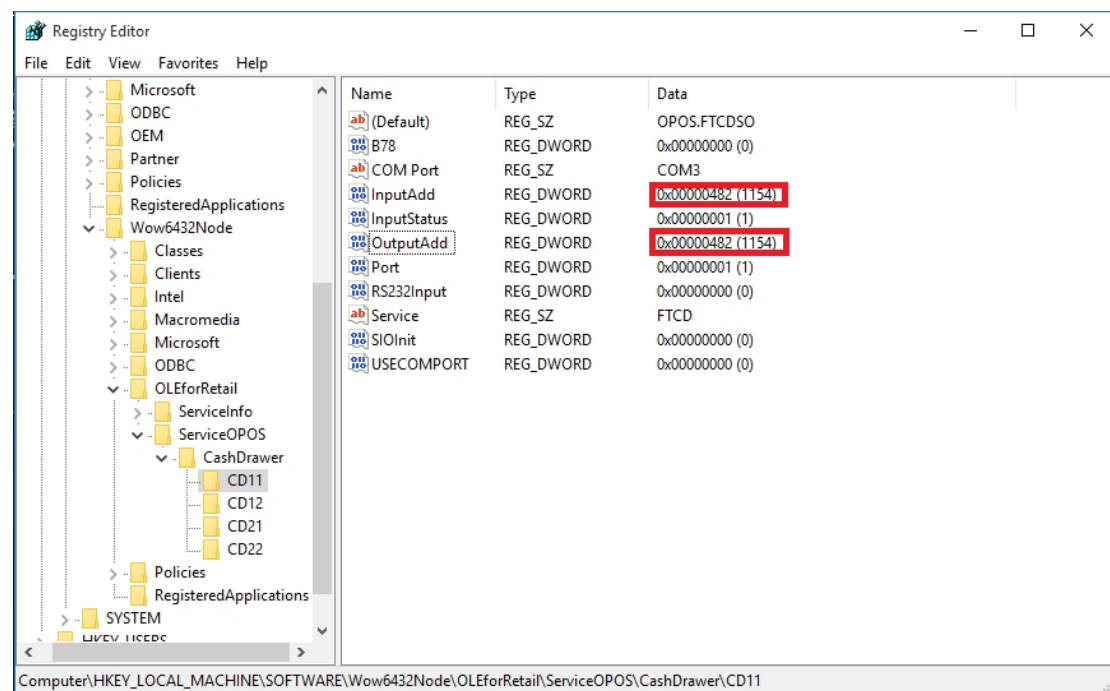
64bit OS:

HKEY_LOCAL_MACHINE\SOFTWARE\Wow6432Node\OLEforRetail\ServiceOPOS\CashDrawer\CD11

32bit OS:

HKEY_LOCAL_MACHINE\SOFTWARE\OLEforRetail\ServiceOPOS\CashDrawer\CD11

Modify InputAdd and OutputAdd to 0x482



Note:

InputAdd and OutputAdd value please reference your user manual.

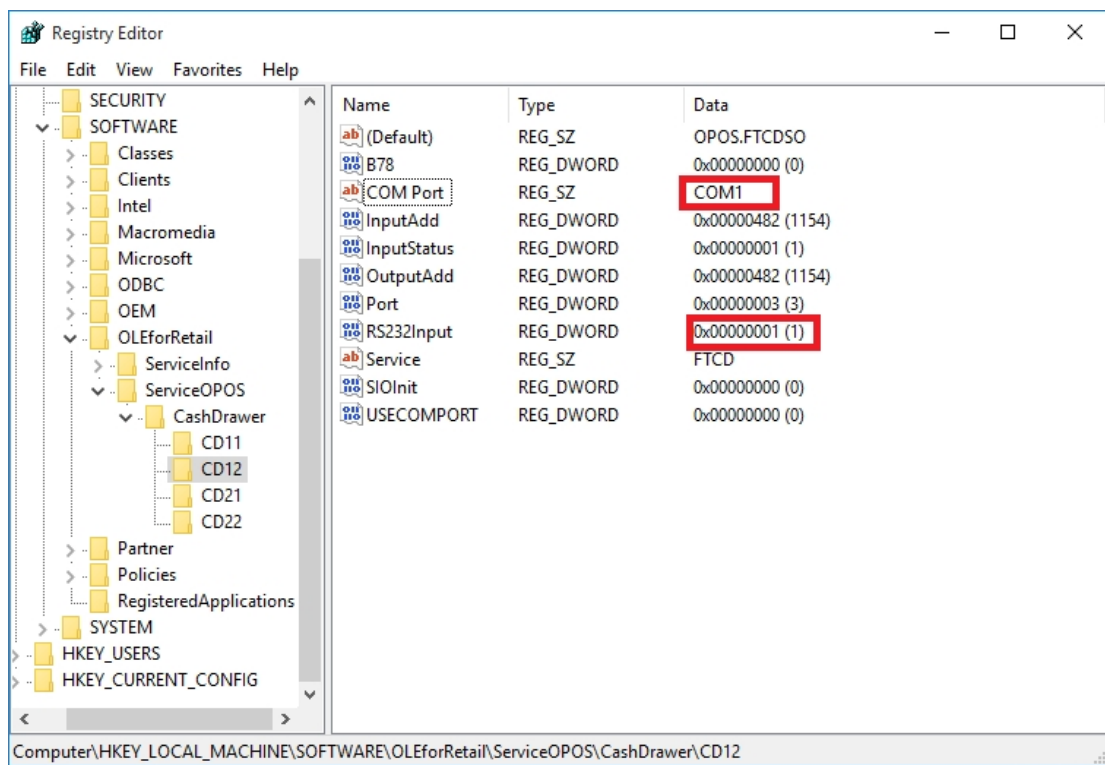
4.If you want to use Y-Cable to control please modify device name

CD12

a) If your Y-Cable like this:



Please modify CD12 “RS232Input” to 1 and “COM Port” value set to RJ45 RS232 line real connect port name.



- b) If you use two input and motherboard is not C94 please modify CD12 "SIOInit" to 2
- c) If your motherboard is C94 and use two input Y-Cable please modify CD12 "SIOInit" to 1