

AURES TECHNOLOGIES

The manual and product are protected by copyright.

## THERMAL PRINTER



## Table of Contents

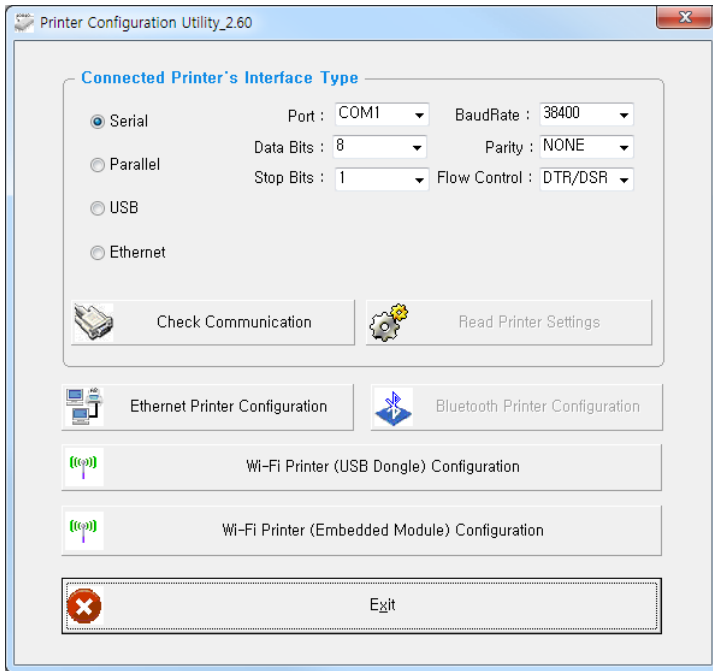
2

1. Instruction	3
2. Printer Option Setting	4
3. Code Page Setting	7
4. TCP/IP, Ethernet Setting	9
5. Wi-Fi Setting	11
6. Bluetooth Setting	15
7. NFC Setting	17

You can change the configuration settings of your printer by using Utility.

## To configure the printer with Utility.

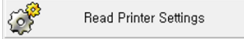
1. Make sure that you have a PC running Windows or later.
2. Download utility from the AURES Technical website ([www.aures-support.com](http://www.aures-support.com)).
3. Connect your printer to your PC using USB cable (Recommended).
4. Run the utility.



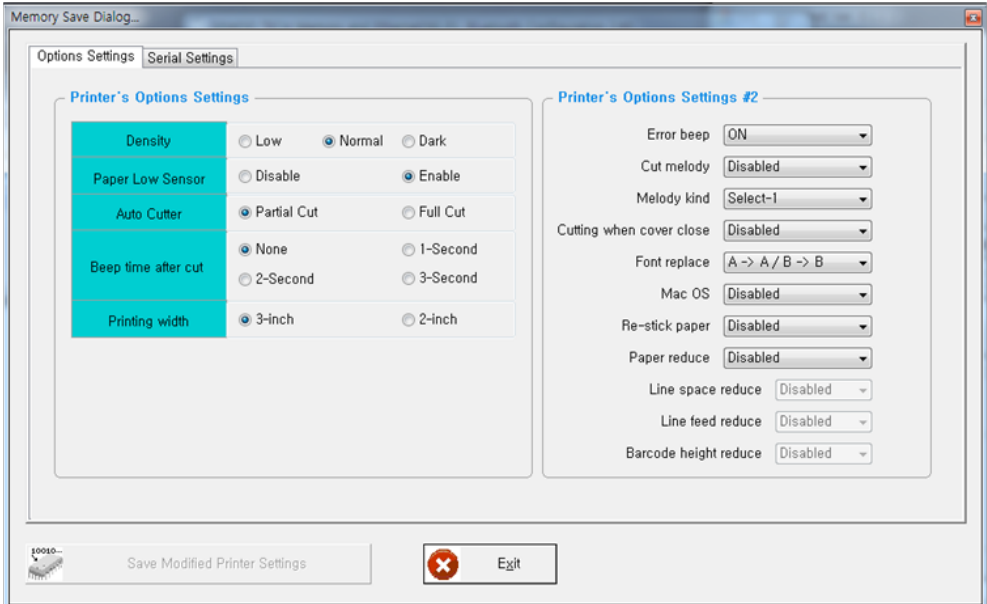
5. Select the connection in the Connected Printer's Interface Type.
6. Click the Check Communication.
7. Click the button for the settings you want to configure.

### To configure Printer's Options with Utility

1. Click Read Printer Settings.



2. Update or check your settings.
3. Click Save Modified Printer Settings to finish.



#### • Error Beep

If the cover is open or there is no paper, the error beep function is activated.

This option allows you to enable / disable the error beep.

- BEEP ON / BEEP OFF

#### • Cut melody & Melody kind

To DK Port (Cash), Melody box or external buzzer can be connected.

You can activate it from the Melody Setting menu, and the melody will operate after the cutting operation.

- Melody Box : Melody is fixed and volume can be adjusted.
- External Buzzer : 3 types of melody are output according to the Melody Type setting and volume control is not included.

### •Cutting when cover close

If the cover is opened and then closed, decide if you want to cut the paper after the dummy feed.

- Disabled / Enabled

### •Font replace

FONT SETTING menu can be change the Font mapping(FONT A / FONT B).

If you did not want other side font, you can disable that.

- FONT A : 12x24

- FONT B : 9x17

#### FONT SETTING

1. FONT A -> A / FONT B -> B

2. FONT A -> B / FONT B -> B

3. FONT A -> A / FONT B -> A

4. FONT A -> B / FONT B -> A

### •Mac os

It is a function for interlocking with MAC OS. When activated, it is registered as Generic POS Printer in Device Manager.

- Disabled / Enabled

### •Re-stick paper

It is a function for use the label paper.

When using this function, the printer performs dummy feeding every minute.

(This feature is only supported on certain models)

- Disabled / Enabled

### •Paper Reduce

Reduce menu (Line space, Line feed, barcode[1D] height) was developed for paper saving.

- Line space : Line space means the amount of feed when you intentionally generate newlines.

- Line feed : Line feed means the amount of feed when there is an automatic line break.

- Barcode Height : Barcode Height means the height of the barcode when creating a one-dimensional barcode.

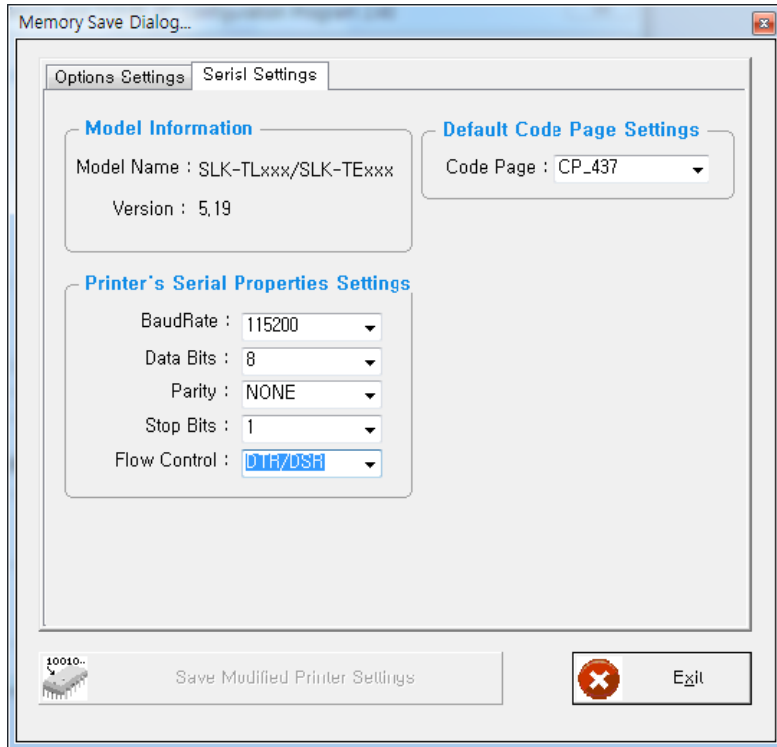
#### EACH OPTION

1. NORMAL

2. REDUCE 50%

3. REDUCE 75%

4. REDUCE 90%



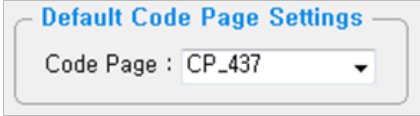
Use the following table to Printer's Options setting.

Name	Description
Density	Set the printing darkness of the printer from Low to Dark.
Paper Low Sensor	Set the mode of the Paper Low Sensor to Disable or Enable.
Auto Cutter	Set the mode of the Auto Cutter to Partial Cut or Full Cut
Beep time after cut	Set the beep time after cut to none, 1, 2 or 3 Seconds.
Printing width	Set the type of Printing width to 3 Inch or 2 Inch.
Code Page	Set the code type of printer to use.
BaudRate	Set the Baudrate of the Printer's serial port to print.
Data Bits	Set the Data Bits of the Printer's serial port to print.
Parity	Set the Parity of the Printer's serial port to print.
Stop Bits	Set the Stop Bits of the Printer's serial port to print.
Flow Control	Set the Flow Control of the Printer's serial port to print.

### 3. Code Page Setting

#### To configure Code Page settings with Utility.

1. Click Serial Settings tab.
2. Update or check the Code Page.



3. Click Save Modified Printer Settings to finish.

Use the following table to Code Page Settings.

Code Page	Description
CP_437	MS-DOS United States, Australia, New Zealand, South Africa
CP_737	MS-DOS Greek
CP_775	Baltic
CP_850	MS-DOS Latin-1
CP_852	MS-DOS Latin-2
CP_857	MS-DOS Turkish / Latin-5
CP_858	MS-DOS Multilingual / Latin-1 with euro symbol
CP_860	MS-DOS Portuguese
CP_862	MS-DOS Hebrew
CP_863	MS-DOS Canadian French
CP_864	MS-DOS Arabic
CP_865	MS-DOS Nordic / Danish / Norwegian
CP_866	MS-DOS Russian / Cyrillic
CP_874	Thai
CP_1250	Windows Central Europe
CP_1251	Windows Cyrillic
CP_1252	Windows West European Latin 1
CP_1253	Windows Greek
CP_1254	Windows Turkish
CP_1256	Windows Arabic
CP_1257	Windows Baltic
CP_1258	Windows Vietnamese

### 3. Code Page Setting

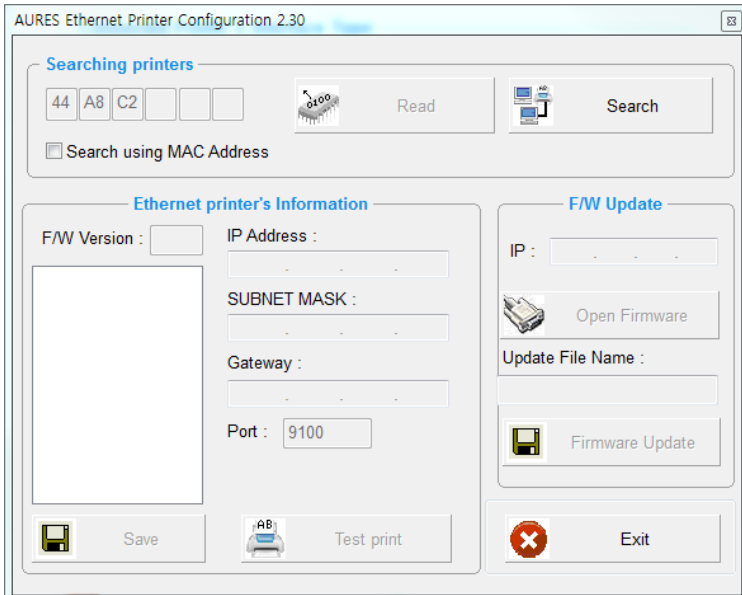
CP_KATAKANA	Katakana
ISO_8859_1	Latin Alphabet No. 1
ISO_8859_2	Latin Alphabet No. 2
ISO_8859_7	Greek
ISO_8859_9	Latin Alphabet No. 5(Turkish)
MAZOVIA	Polish
TIS11	THAI
TIS13	THAI
TIS14	THAI
TIS16	THAI
TIS17	THAI
TIS18	THAI
TIS42	THAI

For more information, Please contact your supplier.



### To configure TCP/IP setting with Utility.

1. Click TCP/IP Printer Configuration.



2. Click Search to find the printer.  
(To Search using MAC Address, you need to check the Search using MAC Address)



3. Update or check your settings.

(To use DHCP Setting, you need to check the DHCP Setting)

The screenshot shows a printer configuration window with the following sections:

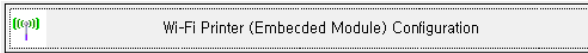
- Searching printers:** Includes a search bar with fields for 44, A8, C2, and three empty boxes. A "Read" button with a chip icon and a "Search" button with a printer icon are present. A checkbox labeled "Search using MAC Address" is checked.
- Ethernet printer's Information:** Contains fields for:
  - F/W Version: ??
  - IP Address: 172 . 16 . 100 . 165
  - SUBNET MASK: 255 . 255 . 255 . 0
  - Gateway: 172 . 16 . 100 . 254
  - Port: 9100
  - A checkbox for "DHCP Setting(Use DHCP)" which is checked.A list of MAC addresses is shown on the left, with "44:a8:c2:05:f5:c8" selected. At the bottom of this section are "Save" (floppy icon) and "Test print" (printer icon) buttons.
- F/W Update:** Contains:
  - IP: 172 . 16 . 100 . 165
  - An "Open Firmware" button with a printer icon.
  - An "Update File Name:" field.
  - A "Firmware Update" button with a floppy icon.
- Exit:** A button with a red "X" icon.

4. Click Test print to test the printer is set correctly.

5. Click Save to finish.

### To configure Wireless LAN settings with Utility.

1. Click Wi-Fi Printer Configuration.



2. Click Open Port.
3. Click Get Wi-Fi Information.
4. Update or check your settings.
5. Click Save Wi-Fi Information to finish.

#### Port and Wi-Fi Information

#### Port Information

Port :	USB	BaudRate :	115200		Open Port
Data Bits :	8	Parity :	NONE		Close Port
Stop Bits :	1	Flow Control :	DTR/DSR		

<p>MAC address : 84:72:07:38:00:17</p> <p>SSID : R&amp;C_dlink24G</p> <p>IP : 192.138.100.1</p> <p>NetMask : 255.255.255.0</p> <p>Gateway : 192.138.100.1</p> <p>DNS : 192.138.100.1</p>	<h4 style="margin: 0;">Wi-Fi Information</h4> <p> Get Wi-Fi Information</p> <p>TCP PORT : 9100</p> <p><input checked="" type="checkbox"/> DHCP Settings</p> <p> Save Wi-Fi Information</p> <p> Exit</p> <p> Reset (Factory Settings)</p> <p> WPS</p>
--	--

<p>Wi-Fi Band : 2.4GHz</p> <p>Wi-Fi Mode : Infrastructure</p> <p>Wi-Fi Channel : 6</p> <p>Wi-Fi Encryption : WPA</p> <p>Wi-Fi Authentication : None</p> <p>Using KEY ID : KEY ID 1</p>	<p>WEP Key</p> <p style="text-align: center;">WEP Key is a write-only.</p> <p>KEY ID 1 : <input type="text"/> IICX</p> <p>KEY ID 2 : <input type="text"/> HFX</p> <p>KEY ID 3 : <input type="text"/> HEX</p> <p>KEY ID 4 : <input type="text"/> IICX</p>
--	--

Progress :

<h4 style="margin: 0; text-align: center;">WPA Authentication</h4> <p>WPA Authentication : AUTO</p> <p>WPA Key : 12345678</p> <p style="font-size: small;">WPA Key is a write-only. The input range is 8 to 63 ASCII or 64 hex characters</p>	<p>WPA Encryption : AUTO</p> <p style="text-align: right;"> Enterprise Settings</p>
---	---

Use the following table to Wireless LAN setting.

Name	Description
SSID	The Network name to connect.
Wi-Fi Mode	Set the mode of the device to SoftAP/ infrastructure.
Wi-Fi Channel	Set the channel to use. 2.4GHz : 1 ~ 13 5GHz : 36 ~ 64, 100 ~ 165
Wi-Fi Encryption	Set the type of Encryption to none, WEP-64, WEP-128 or WPA/WPA2, Enterprise(EAP-TLS, EAP-TTLS, PEAP-MSCHAPv2)
Wi-Fi Authentication	Set the type of Authentication to open system, shared key or both
Using KEY ID	Set the number of KEY to use from No. 1 to No. 4.
KEY ID 1 ~4	Enter value for up to 4 KEYS to ASCII or HEX
DHCP Settings	IP address and DNS options are obtained using DHCP.
TCP Port	Set the port to use
WPA Authentication	Set the type of Authentication to WPA-PSK, WPA2-PSK, Auto / TKIP, AES, Auto

6. To Set Wi-Fi printer correctly, you need to check the AP's or Router's setting in advance.

Ex) D-Link Router (Model: DIR-820L)

MAC address : 84:72:07:38:00:17

SSID : R&D\_dlink24G

IP : 192, 168, 100, 1

NetMask : 255, 255, 255, 0

Gateway : 192, 168, 100, 1

DNS : 192, 168, 100, 1

Wi-Fi Band : 2.4GHz

Wi-Fi Mode : infrastructure

Wi-Fi Channel : 6

Wi-Fi Encryption : WPA

Wi-Fi Authentication : None

Using KEY ID : KEY ID 1

**WPA Authentication**

WPA Authentication : AJTC

WPA Encryption : AJTC

WPA Key : 25456

WPA Key is a write-only. The total length is 3 to 63 ASCII or 64 hex characters

**WIRELESS**

Use this section to configure the wireless settings for your D-Link Router. Please note that changes made on this section may also need to be duplicated on your Wireless Client.

Save Settings    Don't Save Settings

---

**WIRELESS NETWORK SETTINGS**

**Wireless Band :** 2.4GHz Band

**Enable Wireless :**  Always  Add New

**Wireless Network Name :** R&D\_dlink24G (Also called the SSID)

**802.11 Mode :** Mixed 802.11n, 802.11g and 802.11b

**Enable Auto Channel Scan :**

**Wireless Channel :** 2.437 GHz - CH 6

**Transmission Rate :** Best (automatic)

**Channel Width :** Auto 20/40 MHz

**Visibility Status :**  Visible  Invisible

---

**WIRELESS SECURITY MODE**

To protect your privacy you can configure wireless security features. This device supports three wireless security modes, including WEP, WPA-Personal, and WPA-Enterprise. WEP is the original wireless encryption standard. WPA provides a higher level of security. WPA-Personal does not require an authentication server. The WPA-Enterprise option requires an external RADIUS server.

**Security Mode :** WPA-Personal

---

**WPA**

Use **WPA** or **WPA2** mode to achieve a balance of strong security and best compatibility. This mode uses WPA for legacy clients while maintaining higher security with stations that are WPA2 capable. Also the strongest cipher that the client supports will be used. For best security, use **WPA2 Only** mode. This mode uses AES(CCMP) cipher and legacy stations are not allowed access with WPA security. For maximum compatibility, use **WPA Only**. This mode uses TKIP cipher. Some gaming and legacy devices work only in this mode.

To achieve better wireless performance use **WPA2 Only** security mode (or in other words AES cipher).

**WPA Mode :** Auto (WPA or WPA2)

**Cipher Type :** TKIP and AES

**Group Key Update Interval :** 3600 (seconds)

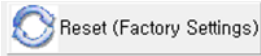
---

**PRE-SHARED KEY**

Enter an 8- to 63-character alphanumeric pass-phrase. For good security it should be of ample length and should not be a commonly known phrase.

**Pre-Shared Key :** .....

Wi-Fi Information	
MAC address :	84:72:07:38:5E:84
SSID :	SW_5E84
IP :	192 , 168 , 100 , 10
NetMask :	255 , 255 , 255 , 0
Gateway :	192 , 168 , 100 , 1
DNS :	192 , 168 , 100 , 1
<input type="checkbox"/> DHCP Settings	
<input type="button" value="Get Wi-Fi Information"/>	
<input type="button" value="Save Wi-Fi Information"/>	
<input type="button" value="Exit"/>	
<input type="button" value="Reset (Factory Settings)"/>	
<input type="button" value="WPS"/>	



- **Reset(Factory Settings)** : Wi-Fi setting will be factory reset.

#### Initialization information

Wi-Fi Mode : Soft-AP

Channel : 1

Encryption : None

SSID : SW\_XXXX / MOBILE\_PRINTERXXXXXX(POS Printer / Mobile Printer)

IP Address : 192.168.100.1

Subnet Mask : 255.255.255.0

Gateway : 192.168.100.1



- **WPS** : Ability to automatically connect to AP even if user does not enter setting information.

(AP must support WPS function.)

How to use - Press the WPS button in the Wi-Fi setting utility and

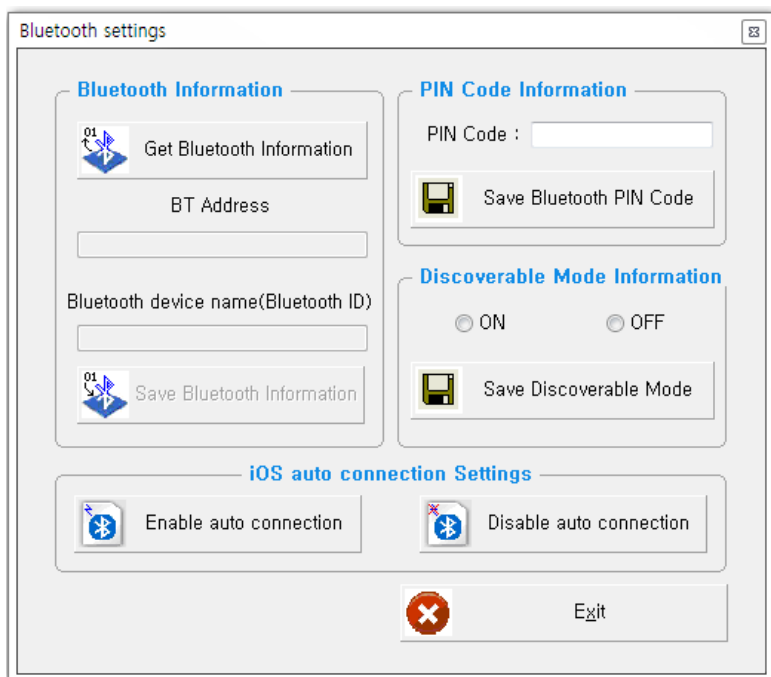
press the AP WPS button to connect.

**To configure Bluetooth setting with Utility.**

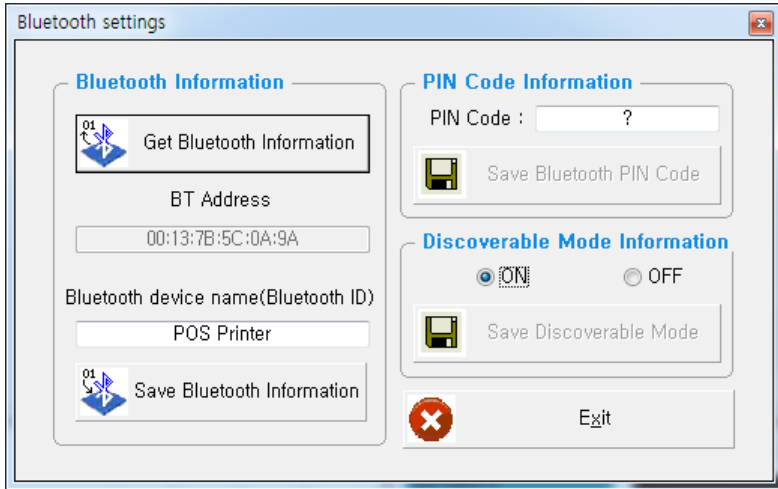
1. Click Communication After Bluetooth Printer Configuration.



2. Click Get Bluetooth Information.



3. Update or check your settings.



4. Click Save Bluetooth Information to finish.

Use the following table to Bluetooth setting.

Name	Description
BT Address	The MAC address for Bluetooth Module.
Bluetooth device name (Bluetooth ID)	The Name of Bluetooth Printer to pair.
PIN Code	Pin code to pair (Default : 0000 or 1234)
Discoverable Mode	Set whether the printer will appear or not in a Bluetooth inquiry on another device, typically, a master device.



1. Turn on the NFC function on your mobile devices.

(Choose either NFC P2P mode or standard mode / Connection is not available with NFC card mode.)

**NOTE** *A display type can be slightly different depending on device models.*



2. If you take your mobile device close to the printer NFC tag, a mobile application will be automatically executed.

**NOTE** *If a mobile application is not installed on mobile devices, NFC function is not available.*

*Go to CD -> AURES\_NFCPrint to install the application.*