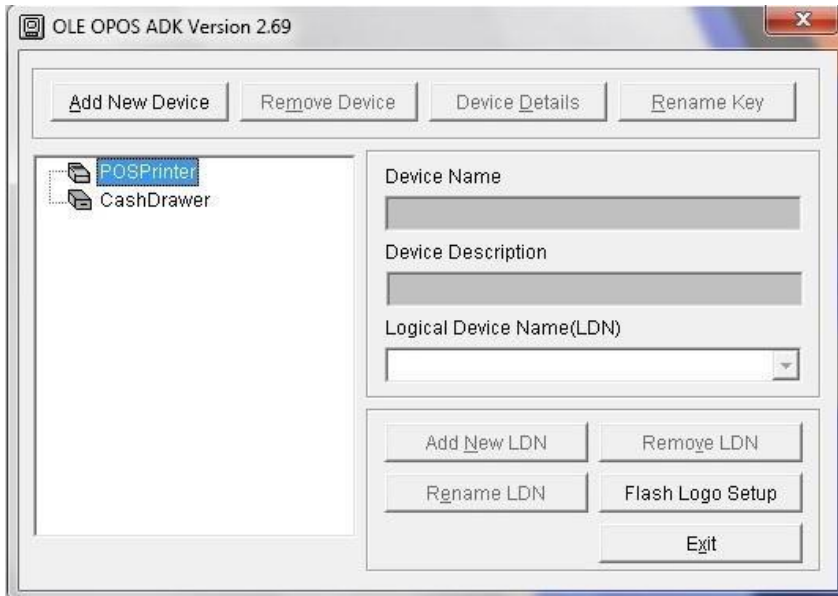


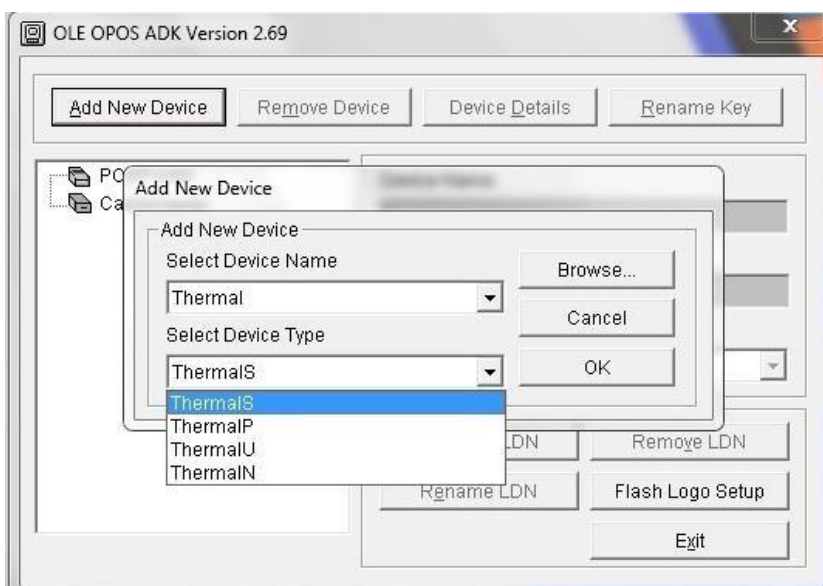


## OLE OPOS Driver Installation

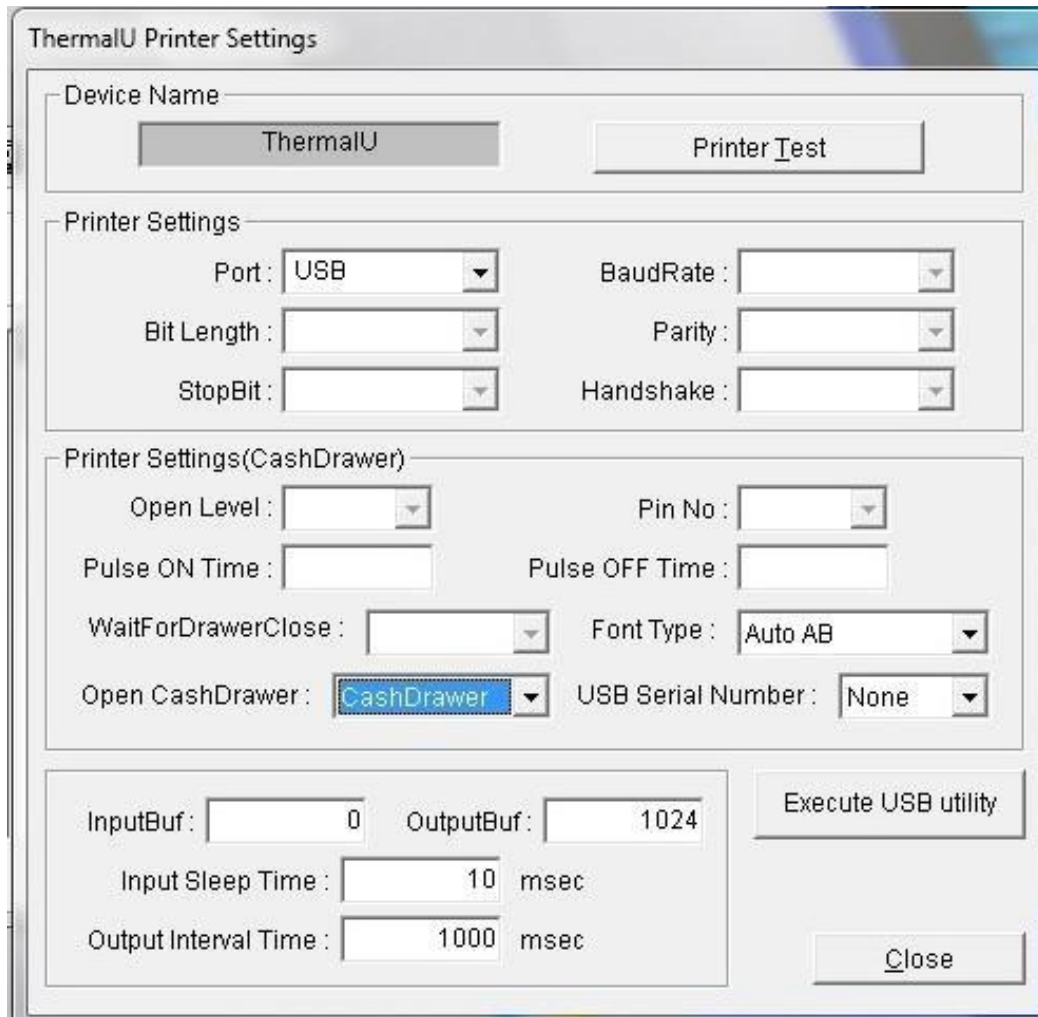
1. Install the OLE POS Setup with administrative right.
2. Launch SetupPos.exe in the Start Menu.
3. Select **POSPrinter**, Then **Add New Device** :



4. Select **Thermal** on the first line, then **ThermalS** for serial, **ThermalU** for USB, **ThermalP** for LPT, **ThermaN** for Network interface :



- Once the device is added click on it and select [Device Details](#), then [Printer Test and settings](#) :



The screenshot shows a dialog box titled "ThermalU Printer Settings". It is divided into several sections:

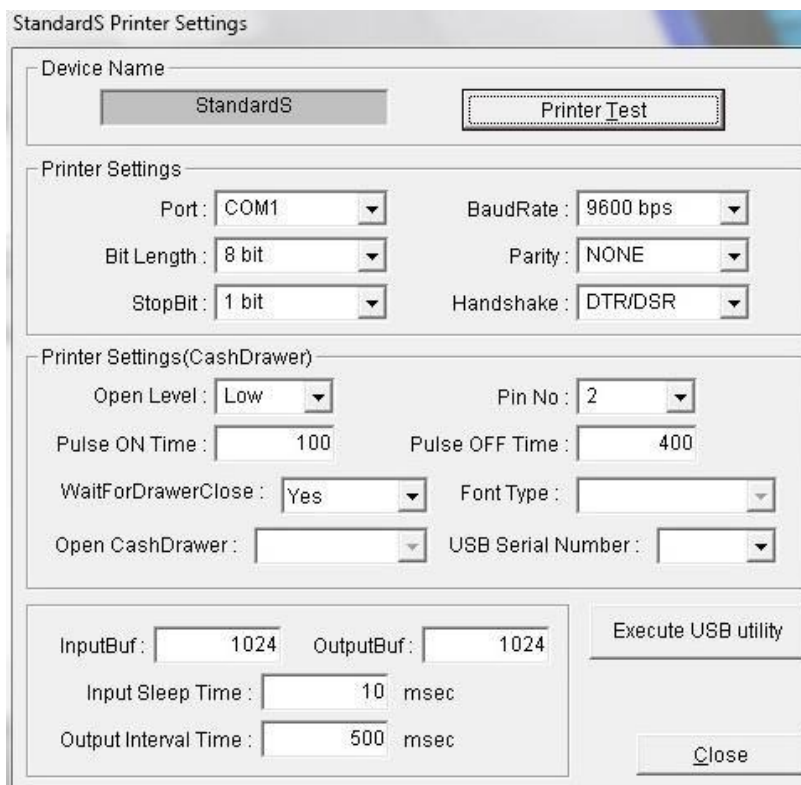
- Device Name:** A text field containing "ThermalU" and a button labeled "Printer Test".
- Printer Settings:** A section with several dropdown menus: "Port" (set to "USB"), "BaudRate", "Bit Length", "Parity", "StopBit", and "Handshake".
- Printer Settings(CashDrawer):** A section with dropdown menus for "Open Level", "Pin No", "WaitForDrawerClose", "Font Type" (set to "Auto AB"), and "Open CashDrawer" (set to "CashDrawer"). It also has text input fields for "Pulse ON Time" and "Pulse OFF Time", and a dropdown for "USB Serial Number" (set to "None").
- Buffer and Timing Settings:** Text input fields for "InputBuf" (0), "OutputBuf" (1024), "Input Sleep Time" (10 msec), and "Output Interval Time" (1000 msec).
- Buttons:** "Execute USB utility" and "Close".

You can configure the port settings here and do a test with [Printer Test](#).

6. To add a cashdrawer follow the same step with the CashDrawer line :



In case of a RS232 Configuration, make sure the com port settings are the same as the printer.



7. You can add a LDN on the main screen for any device :

