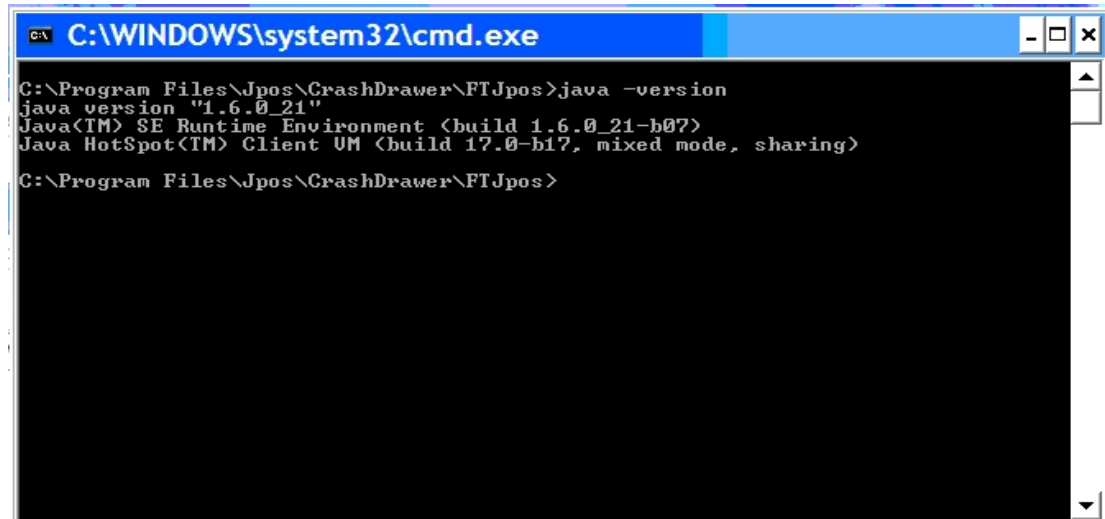
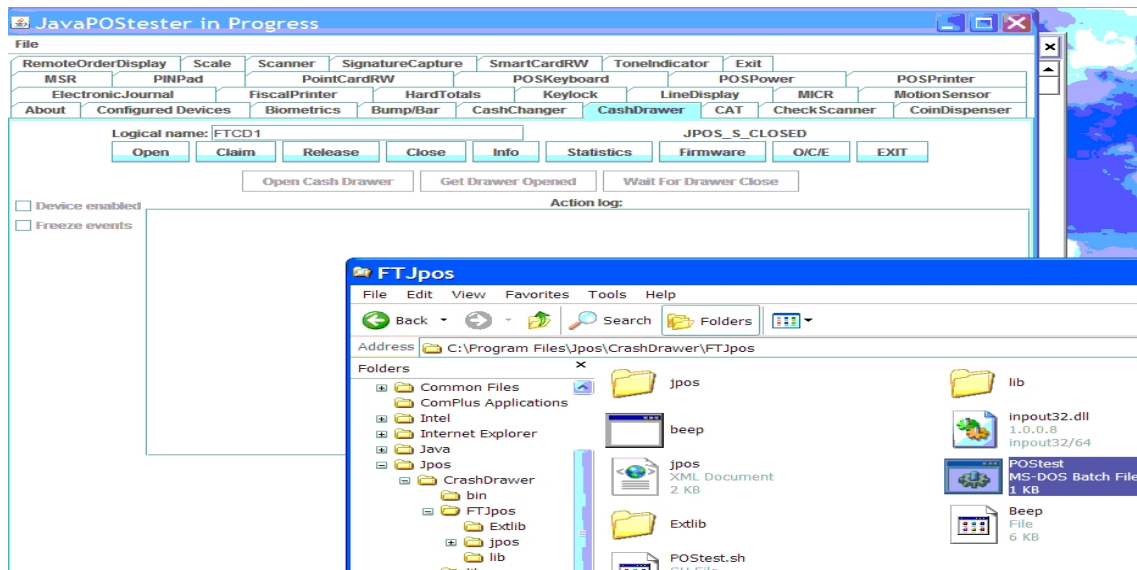


FT VFD P07300 JPOS Driver Install Guide

- 1 Install Java Runtime Environment (JRE) V1.6 or later on your windows OS



- 2 Unzip "FTP07300_Win_xxx.zip" package to your folder, [xxx] is version numeric.
- 3 Copy "\Extlib\win32com.dll" to your <JRE>\bin directory.
- 4 Copy "\Extlib\javax.comm.properties" to your <JRE>\lib directory.
** The "javax.comm.properties" file must be installed. If it is not, no ports will be found by the system.*
- 1 Check "jpos.xml" file "Port" property is Line Display connect port
`<prop name="Port" type="String" value="COM7"/>`
- 5 Run batch file "POStest.bat" to start JPOS test utility, select "LineDisplay" item then key in "FTLD" device name then "Open", "Claim" and select "Device enable".



jpos.xml

- On Windows OS "Port" set "COM1" ~ "COM6"
- On Linux "Port" set "/dev/ttyS0" ~ "/dev/ttyS5"

```
<?xml version="1.0" encoding="UTF-8"?>
<!DOCTYPE JposEntries PUBLIC "-//JavaPOS//DTD//EN"
    "jpos/res/jcl.dtd">

<JposEntries>
<!--Saved by JavaPOS jpos.config/loader (JCL) version 2.0.1 on 9/25/01 10:43
AM-->

    <JposEntry logicalName="FTLD">
        <creation factoryClass="com.ft.jpos.FTJposServiceInstanceFactory"
serviceClass="com.ft.jpos.LineDisplayService"/>
        <vendor name="FT" url="http://www.ft.com"/>
        <jpos category="LineDisplay" version="1.12"/>
        <product description="FT Line Display JavaPOS Service" name="P07303II
Line Display" url="http://www.ft.com"/>

        <!--Other non JavaPOS required property (mostly vendor properties and bus
specific properties i.e. RS232 )-->
        <prop name="Baud" type="Integer" value="9600"/>
        <prop name="LogLevel" type="Integer" value="0"/>
        <prop name="DataBits" type="Integer" value="8"/>
        <prop name="Parity" type="Integer" value="0"/>
        <prop name="StopBits" type="Integer" value="1"/>
        <prop name="Port" type="String" value="COM7"/>
        <prop name="deviceBus" type="String" value="Unknown"/>
        <prop name="LogFile" type="String" value="log.out"/>
    </JposEntry>

</JposEntries>
```