



## USER'S MANUAL

JAZZ-BASE151/JAZZ-KIOSK-BASE | ART-04XXX

JAZZ-BASE151-BLACK / JAZZ-BASE151-WHITE

JAZZ-KIOSK-BASE151-BLACK/JAZZ-KIOSK-BASE151-WHITE

## FCC Notice



### FCC Statement

This equipment has been tested and found to comply with the limits for a Class A digital device, pursuant to part 15 of the FCC Rules. These limits are designed to provide reasonable protection against harmful interference when the equipment is operated in a commercial environment. This equipment generates, uses, and can radiate radio frequency energy and, if not installed and used in accordance with the instruction manual, may cause harmful interference to radio communications. Operation of this equipment in a residential area is likely to cause harmful interference in which case the user will be required to correct the interference at his own expense.

This equipment complies with Part 15 of the FCC Rules. Operation is subject to the following two conditions: (1) This device may not cause harmful interference, and (2) This device must accept any interference received, including interference that may cause undesired operation.

### Caution:

The manufacturer is not responsible for any radio or TV interference caused by unauthorized modifications to this equipment. Such modifications could void the user authority to operate the equipment.

### CAUTION:

Risk of Explosion if Battery is replaced by an Incorrect Type. Dispose of Used Batteries According to the Instructions.

## CE Notice



This device complies with 2014/30/EU "EMC Directive " and 2014/35/EU "Low Voltage Directive" issued by the Commission of the European Community.

## WEEE Notice



The WEEE mark applies only to countries within the European Union (EU) and Norway. This appliance is labeled in accordance with European Directive 2002/96/EC concerning waste electrical and electronic equipment (WEEE). The Directive determines the framework for the return and recycling of used appliances as applicable throughout the European Union.

This label is applied to various products to indicate that the product is not to be thrown away, but rather reclaimed upon end of life per this Directive.

## **Safety**

### **IMPORTANT SAFETY INSTRUCTIONS**

To disconnect the machine from the electrical Power Supply, turn off the power switch and remove the power cable plug from the wall socket. The wall socket must be easily accessible and in close proximity to the machine.

Read these instructions carefully. Save these instructions for future reference.

Follow all warnings and instructions marked on the product.  
Do not use this product near water.

Do not place this product on an unstable cart, stand, or table. The product may fall, causing serious damage to the product. Slots and openings in the cabinet and the back or bottom are provided for ventilation; to ensure reliable operation of the product and to protect it from overheating. These openings must not be blocked or covered. The openings should never be blocked by placing the product on a bed, sofa, rug, or other similar surface.

This product should never be placed near or over a radiator or heat register, or in a built-in installation unless proper ventilation is provided. This product should be operated from the type of power indicated on the marking label. If you are not sure of the type of power available, consult your dealer or local power company.

Do not allow anything to rest on the power cord. Do not locate this product where persons will walk on the cord. Never push objects of any kind into this product through cabinet slots as they may touch dangerous voltage points or short out parts that could result in a fire or electric shock. Never spill liquid of any kind on the product.

***Warning - If using Class I adapter, power cord shall be connected to a socket-outlet with earthing connection.***

# Table of Contents

Package Overview ..... 2

Product Overview ..... 3

Specification ..... 4

How to install the Processor Module ..... 6

How to Access Power and USB-C Monitor Cables ..... 7

How to install the WIFI Dongle ..... 8

Attaching the 2nd Display..... 9

Attaching the MSR..... 10

Attaching the EMV Reader ..... 11

Attaching the iButton Reader..... 12

Removing the 2nd Display..... 13

Removing the MSR ..... 14

Removing the EMV Reader ..... 15

Removing the iButton Reader ..... 16

I/O Connection..... 17

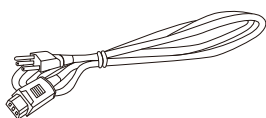
Product Dimensions ..... 18

Appendix A: Driver Install ..... 19

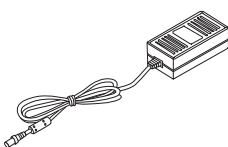
# Package Overview



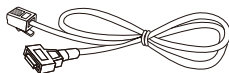
JAZZ-BASE151  
JAZZ-KIOSK-BASE151(w/o stand)



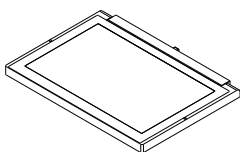
Power Cord



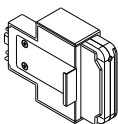
DC Power Supply



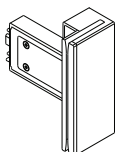
RJ-50 to DB-9M Cable x 2



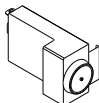
2nd Display  
(Optional)



EMV Reader  
(Optional)



MSR  
(Optional)



iButton Reader  
(Optional)

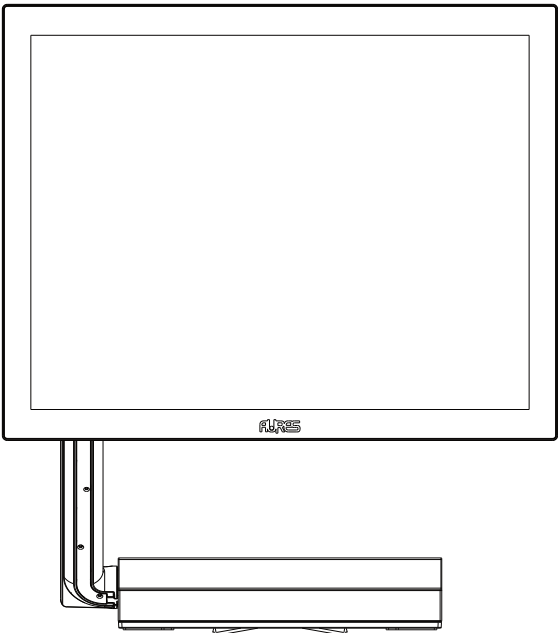


User Manual

# Product Overview

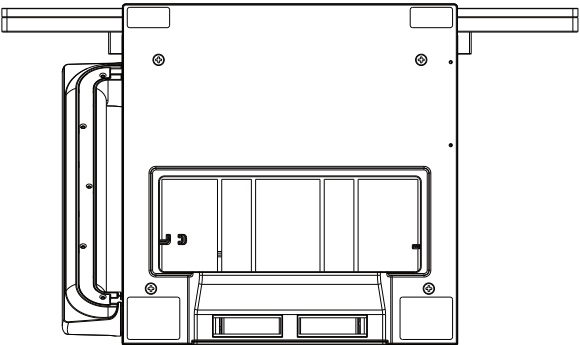
JAZZ-BASE151 is an 15 inch touch display module designed for point of sale applications.

- Front View



(stand is option)

- Bottom View



# Specification

| Model Name                   |  | JAZZ-BASE151/JAZZ-KIOSK-BASE151                              |   |
|------------------------------|--|--|---|
| CPU support                  | Intel® BayTrail Processor J1900 (2M Cache, up to 2.42 GHz)   | Intel® Core™ Skylake i3-6100U Processor (3M Cache, 2.30 GHz) | Intel® Core™ Kabylake i5-7300U Processor (3M Cache, up to 3.50 GHz) |
| System Memory<br>1 x SO-DIMM | DDR3L<br>4GB Std Max 8GB   | DDR4<br>4GB Std Max 16GB                                     |   |
| BIOS                         | AMI uEFI BIOS  |  |   |
| LCD Panel                    |  |  |   |
| LCD Size                     | 15" (AUO G150XTN03.8)  |  |   |
| Brightness                   | 400 cd/m²  |  |   |
| Maximal resolution           | 1024 x 768   |  |   |
| Aspect Ratio                 | 4:3  |  |   |
| Backlight Type               | LED  |  |   |
| LED Life Time                | 60,000 Hours (min.)  |  |   |
| Touch Sensor                 |  |  |   |
| P-CAP Touch                  |  |  |   |
| Touch Screen                 | 10 points  |  |   |
| Controller IC                | EETI 3188  |  |   |
| Interface                    | USB  |  |   |
| Storage                      |  |  |   |
| SSD                          | Two M.2 2280 Slots, one 128GB SSD Std  |  |   |
| Monitor System               |  |  |   |
| Power button                 | 1 x with Power indicator (Blue color when power ON)  |  |   |
| USB                          | 4 x Type-C female  |  |   |
|                              | *From CPU BOX by one (DP + USB3.0)   |  |   |
|                              | *Accessory device Left said by one (USB2.0 only, 5V/0.5A)  |  |   |
|                              | *Accessory device Right said by one (USB2.0 only, 5V/0.5A)   |  |   |
|                              | *2nd Display up said by one (USB2.0 only, 5V/1.5A)   |  |   |
|                              | 1 x Type-A female  |  |   |
|                              | *USB2.0 only(5V/0.5A)  |  |   |
| Speaker                      | Output Mono 2W   |  |   |
| IO BOX                       |  |  |   |
| DC-IN jack                   | 1 x 2.5Φ jack connector for 19VDC input  |  |   |
| USB                          | 6 x Type-a USB3.0  |  |   |
| Serial / COM                 | 2 x RJ50 connector with RJ50 to DB9 cable for RS-232 port (Provide power)                                |  |   |
| LAN                          | 1 x RJ45 port for Gigabit Ethernet, support Wake on LAN  |  |   |
| USB-C Ports                  | One to Display, One for general use, Video support for HDMI, VGA and/or USB 3.0 and other USB-C adapters |  |   |

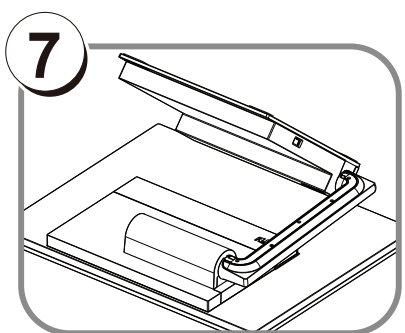
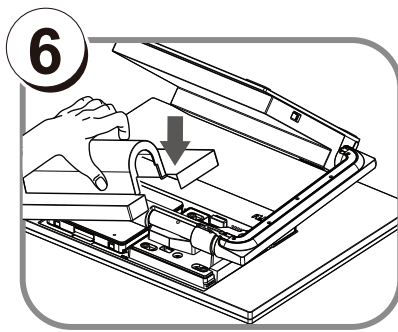
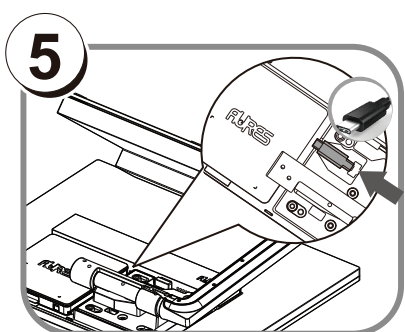
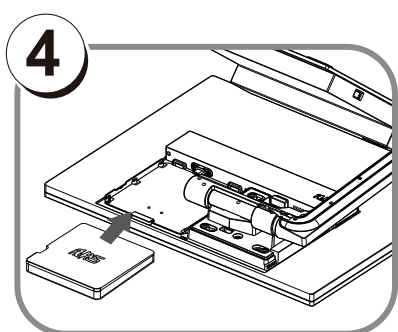
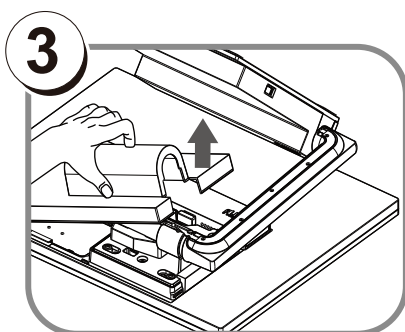
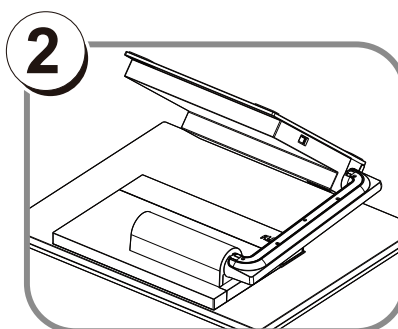
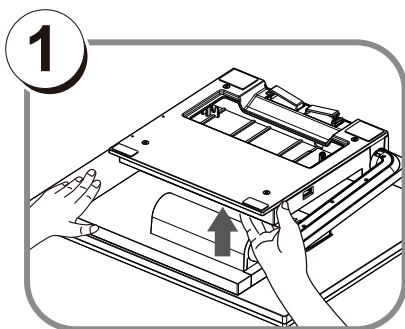
|                              |   |
|------------------------------|---|
| <b>Power</b>                 |   |
| Power Adapter                | External 19V / 3.42A 65Watt Adapter   |
| <b>Certifications</b>        |   |
| EMI                          | FCC Class A / CE  |
| <b>Environment</b>           |   |
| Operating Temperature        | 0-40°C  |
| Storage Temperature          | -20°C-60°C  |
| Humidity                     | 5%-80% non-condensing   |
| <b>Dimension (W x D x H)</b> | LCD 0 degree :<br>517.44 x 54.08 x 313.31mm   |
| <b>Weight (N.W./G.W.)</b>    | 5.4kg / 7.1kg(JAZZ-BASE151)<br>2.3kg / 3.8kg(JAZZ-KIOSK-BASE151)                                  |
| <b>OS support J1900/i3</b>   | Windows® 7 Professional for Embedded Systems,<br>Windows® Embedded POSReady 7, Windows® 10, Linux |
| <b>OS support i5</b>         | Windows® 10, Linux  |

\* This specification is subject to change without prior notice.



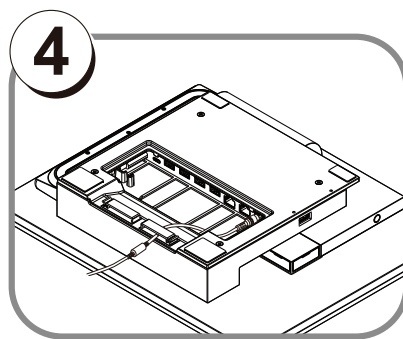
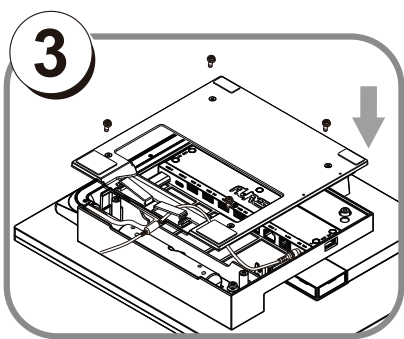
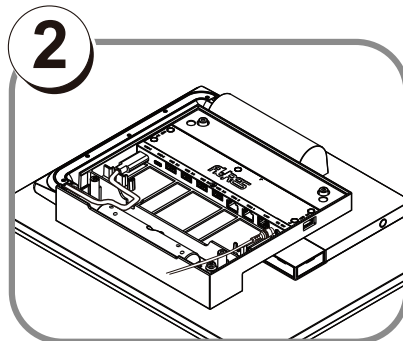
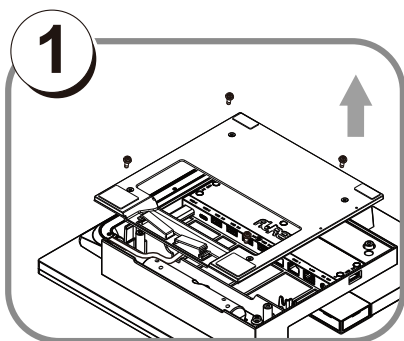
## How to install the Processor Module

1. Lay the LCD flat on a clean even surface.
2. Move the stand into position as shown in the step 2 diagram.
3. Remove the back cover as seen in the step 3 diagram.
4. Insert the Processor Module as seen in the step 4 diagram.
5. To connect the USB cable to Processor Module per step 5 diagram.
6. Replace the back cover as shown in the step 6 diagram.



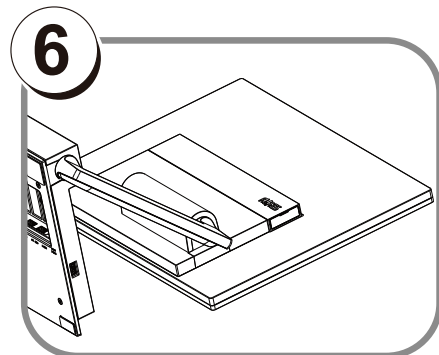
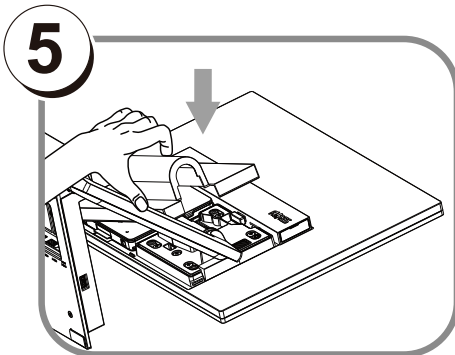
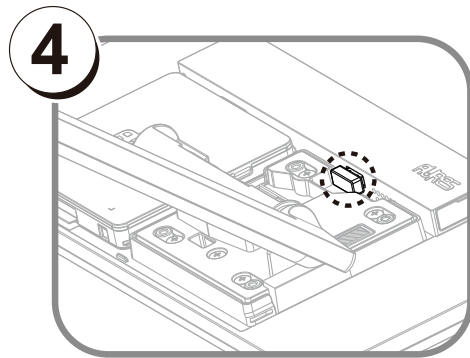
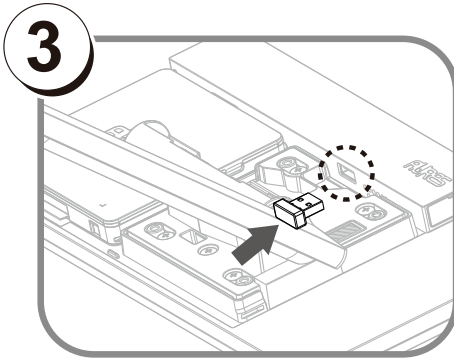
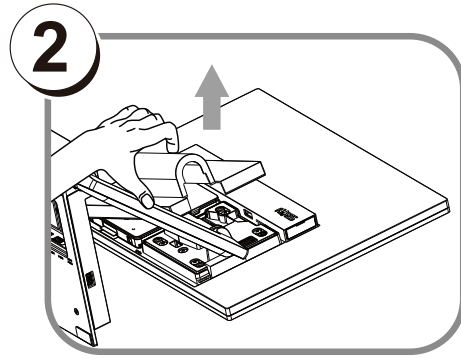
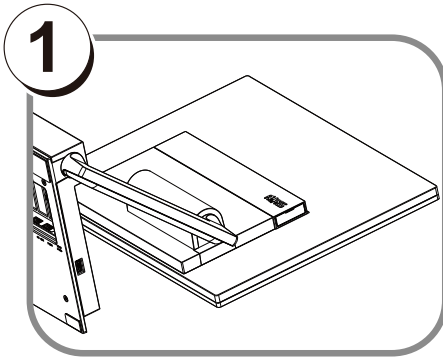
## How to Access Power and USB-C Monitor Cables

1. Lay the LCD flat on a clear even surface.
2. Remove the 4 screws to remove the stand bottom cover as seen in the step 1 diagram.
3. Connect the USB-C and power cable to the appropriate connectors as seen in the step 2 diagram.
4. Replace the stand cover and tighten 4 screws as seen in the step 3 diagram.
5. Keep additional cables in order by using the cable mount as seen in the step 4 diagram.



## How to install the WIFI Dongle

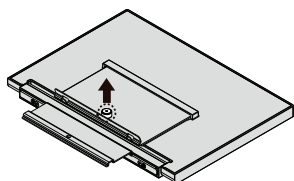
1. Lay the LCD flat on an even surface.
2. Remove the MB cover as seen in the step 2 diagram.
3. Insert the WIFI Dongle to the appropriate as seen in the step 3&4 diagram.
4. Re-attach the arm cover as seen in the step 6 diagram.



## Attaching the 2nd display

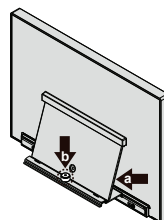
Before attaching the 2nd display to your monitor, please make sure your monitor and computer are turned off.

1



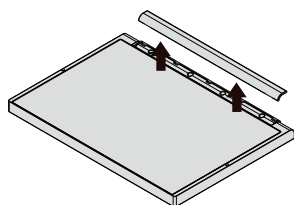
Remove the thumb screw from 2nd display.

2



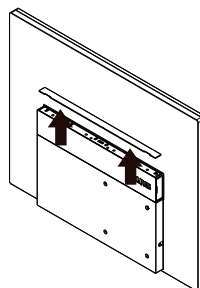
a. Rotate 2nd display and move the bracket into position.  
b. insert the thumb screw.

3



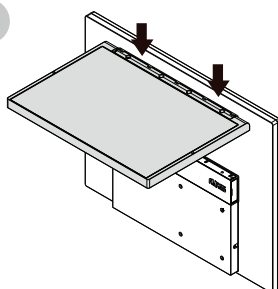
Remove the display arm cover from 2nd display.

4



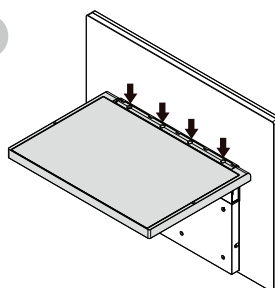
Remove the rear cover cap from monitor.

5



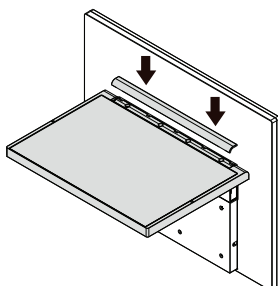
Move the 2nd display into monitor.

6



Fix the 4 screws in 2nd display with monitor.

7

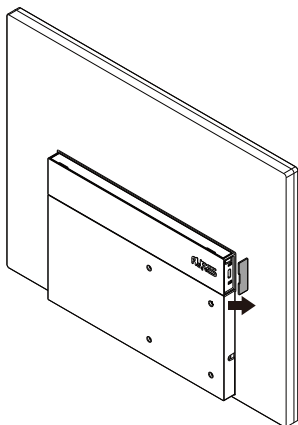


Re-attach the display arm cover to 2nd display.

## Attaching the MSR

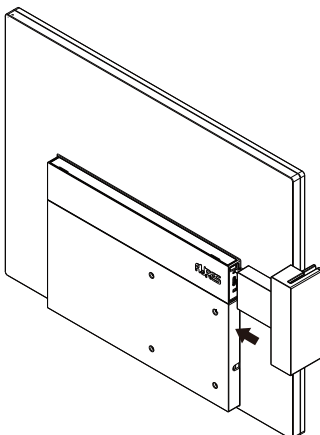
Before attaching the MSR to your monitor, please make sure your monitor and computer are turned off.

1



Remove the rear cover cap.

2

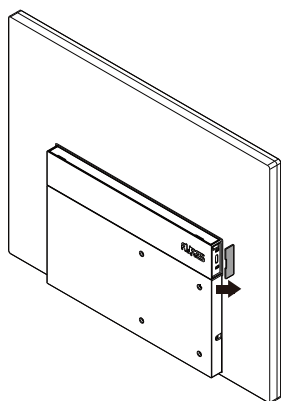


Insert the MSR to the appropriate as seen in the diagram.

## Attaching the EMV Reader

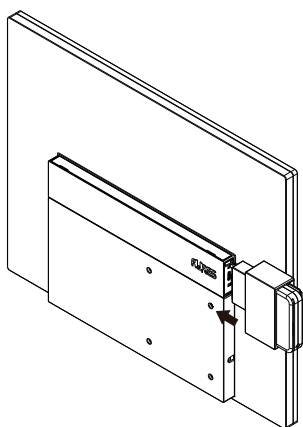
Before attaching the EMV Reader to your monitor, please make sure your monitor and computer are turned off.

1



Remove the rear cover cap.

2

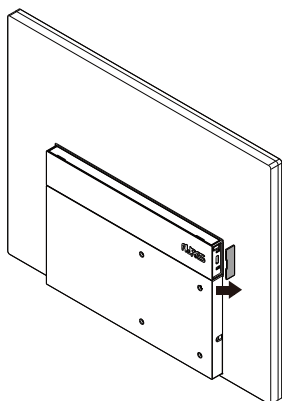


Insert the EMV Reader to the appropriate as seen in the diagram.

## Attaching the iButton Reader

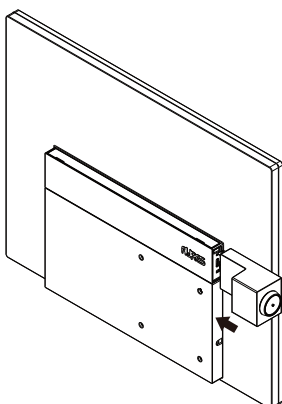
Before attaching the iButton Reader to your monitor, please make sure your monitor and computer are turned off.

1



Remove the rear cover cap.

2

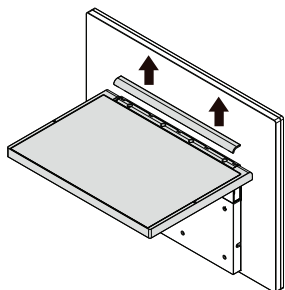


Insert the iButton Reader to the appropriate as seen in the diagram.

## Remove the 2nd display

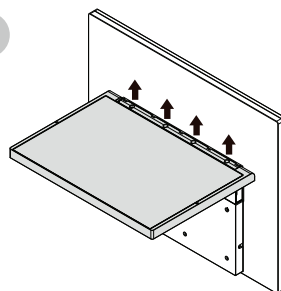
Before removing the 2nd display from your monitor, please make sure your monitor and computer are turned off.

1



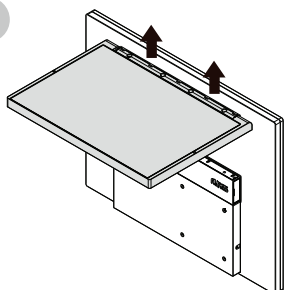
Uninstall the display arm cover from 2nd display.

2



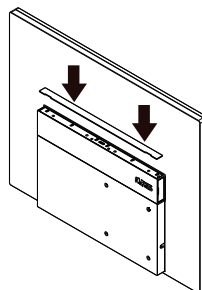
Remove the 4 screws in 2nd display.

3



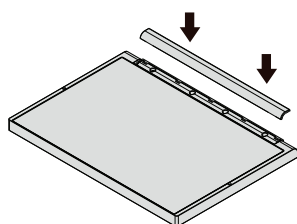
Move the 2nd display from monitor.

4



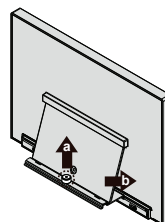
Attached the rear cover cap to monitor.

5



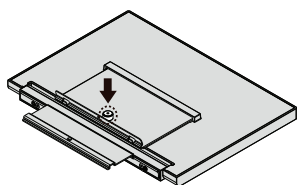
Install the display arm cover to 2nd display.

6



a. Remove the thumb screw.  
b. Rotate 2nd display and move the bracket into position.

7

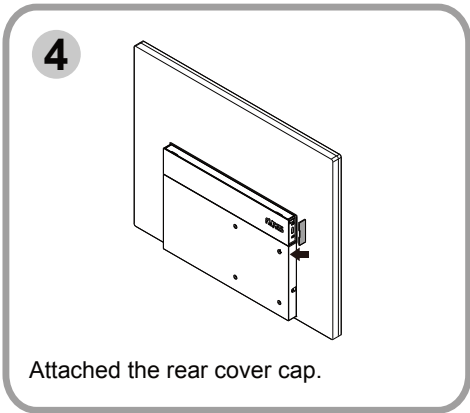
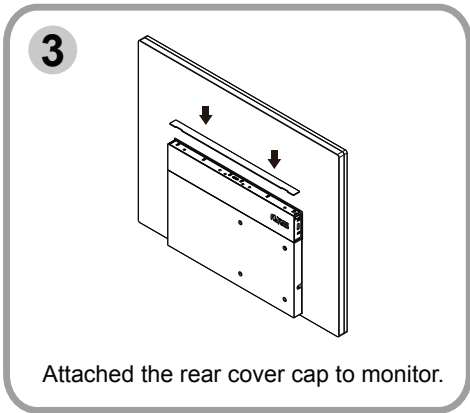
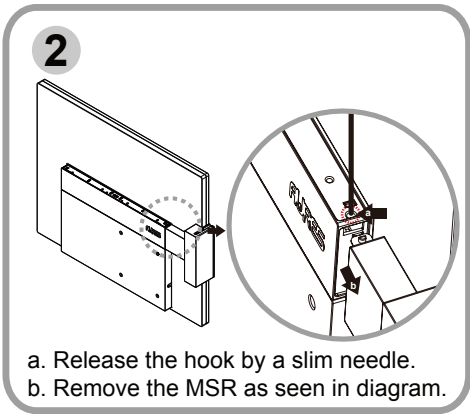
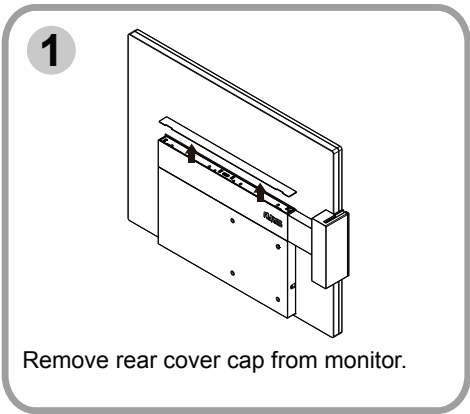


Insert the thumb screw to 2nd display.



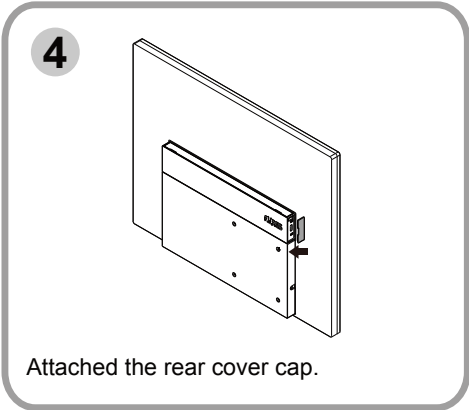
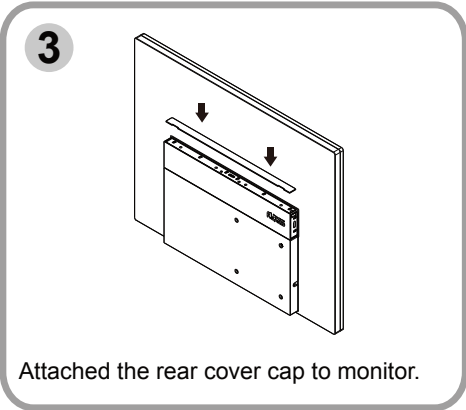
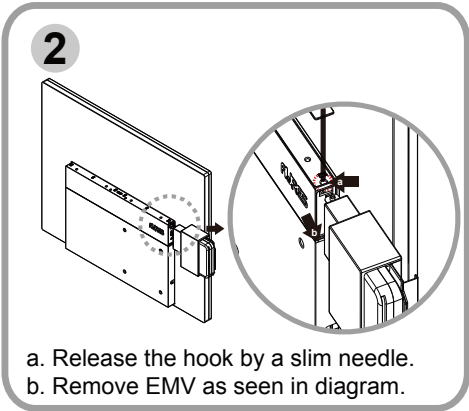
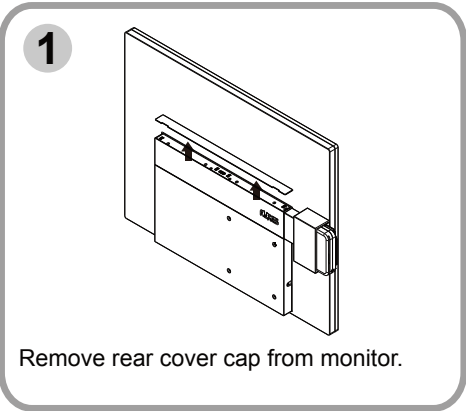
# Remove the MSR

Before removing the MSR to your monitor, please make sure your monitor and computer are turned off.



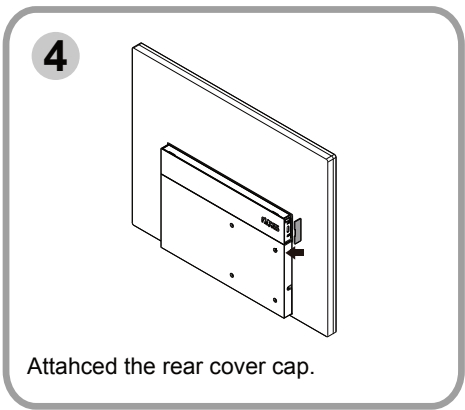
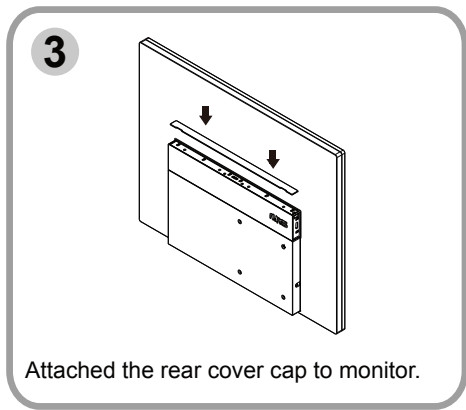
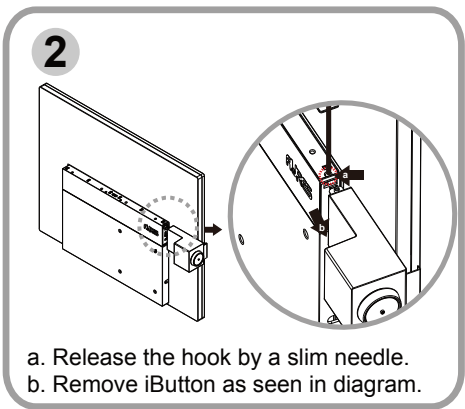
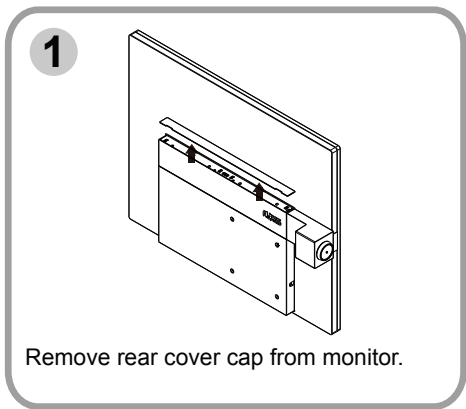
# Remove the EMV Reader

Before removing the EMV Reader to your monitor, please make sure your monitor and computer are turned off.

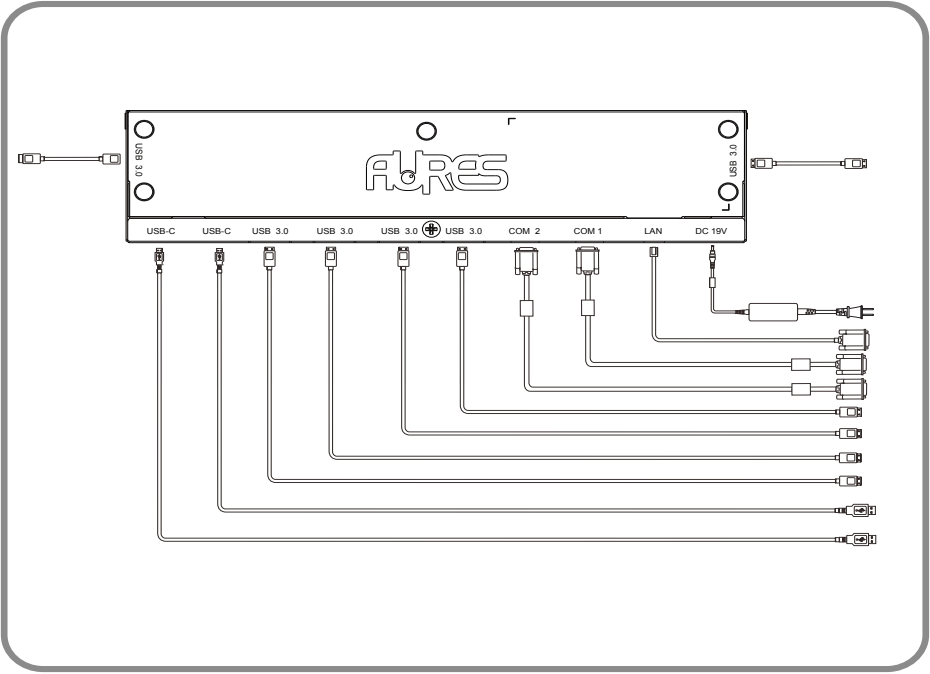


# Remove the iButton Reader

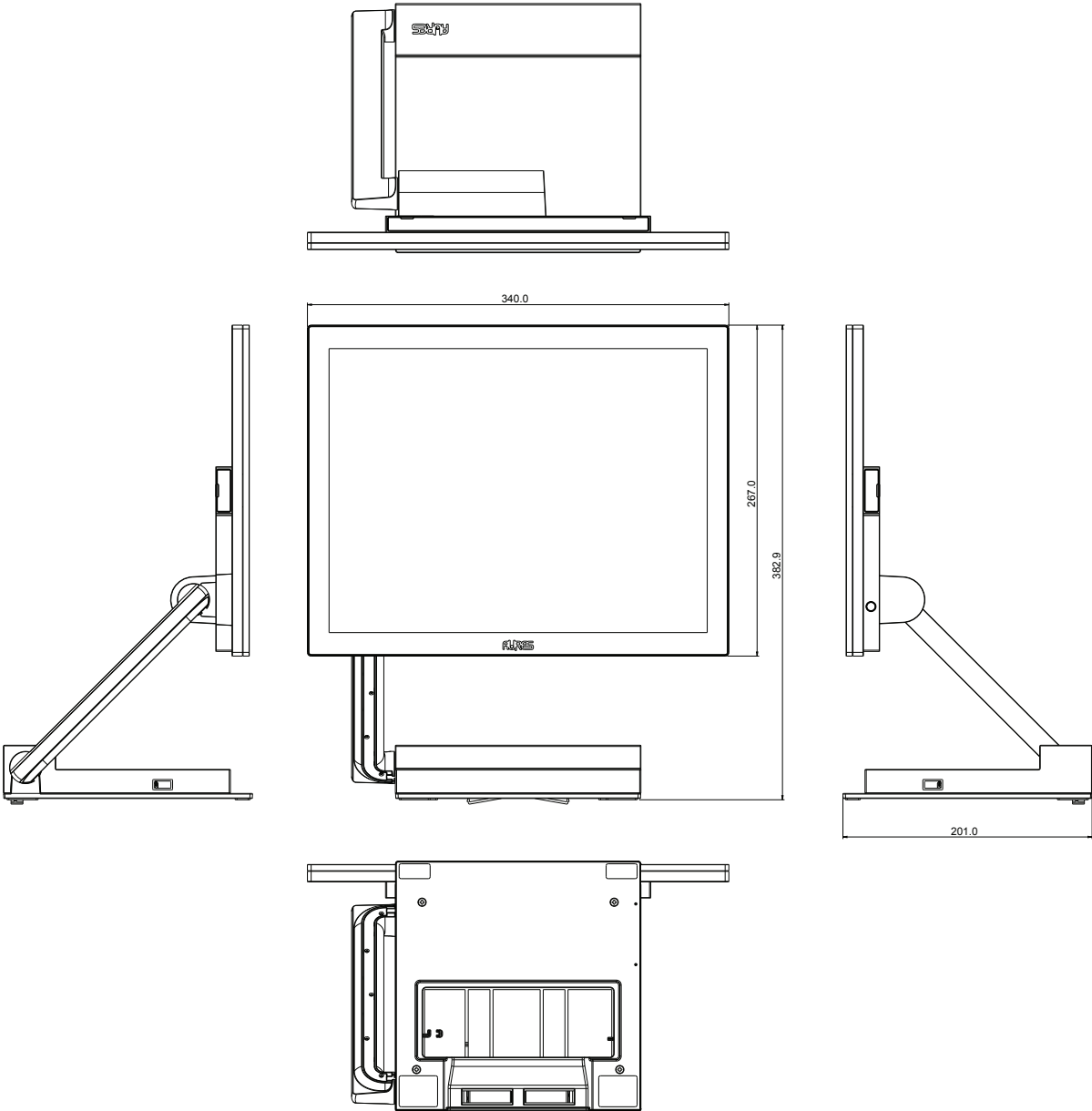
Before removing the iButton Reader to your monitor, please make sure your monitor and computer are turned off.



# I/O connection



# Product Dimensions



## **Appendix A: Driver Installation**

To download the most recent drivers and utilities, and obtain advice regarding the installation of your equipment, please visit the AURES Technical Support Website

[www.ares-support.com](http://www.ares-support.com)